

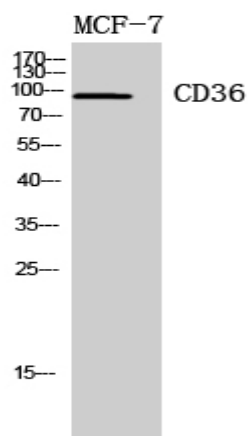
CD36 Polyclonal Antibody

| | |
|------------------------------|--|
| Catalog No : | YT5585 |
| Reactivity : | Human;Mouse;Rat;Tilapia |
| Applications : | WB;IHC;ELISA |
| Target : | CD36 |
| Fields : | >>PPAR signaling pathway;>>Phagosome;>>AMPK signaling pathway;>>ECM-receptor interaction;>>Hematopoietic cell lineage;>>Adipocytokine signaling pathway;>>Insulin resistance;>>Fat digestion and absorption;>>Cholesterol metabolism;>>Malaria;>>Diabetic cardiomyopathy;>>Lipid and atherosclerosis |
| Gene Name : | CD36 |
| Protein Name : | Platelet glycoprotein 4 |
| Human Gene Id : | 948 |
| Human Swiss Prot No : | P16671 |
| Mouse Gene Id : | 12491 |
| Mouse Swiss Prot No : | Q08857 |
| Rat Swiss Prot No : | Q07969 |
| Immunogen : | The antiserum was produced against synthesized peptide derived from the Internal region of human CD36. AA range:331-380 |
| Specificity : | CD36 Polyclonal Antibody detects endogenous levels of CD36 protein. |
| Formulation : | Liquid in PBS containing 50% glycerol, 0.5% BSA and 0.02% sodium azide. |
| Source : | Polyclonal, Rabbit,IgG |
| Dilution : | WB 1:500 - 1:2000. IHC 1:100 - 1:300. ELISA: 1:10000. Not yet tested in other applications. |

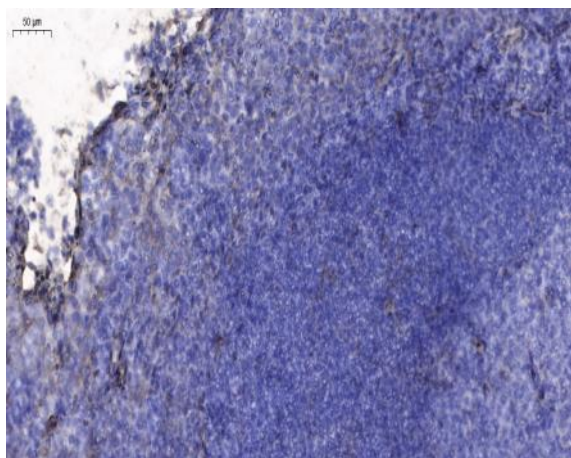
| | |
|-------------------------------|---|
| Purification : | The antibody was affinity-purified from rabbit antiserum by affinity-chromatography using epitope-specific immunogen. |
| Concentration : | 1 mg/ml |
| Storage Stability : | -15°C to -25°C/1 year(Do not lower than -25°C) |
| Observed Band : | 90kD |
| Cell Pathway : | PPAR;ECM-receptor interaction;Hematopoietic cell lineage;Adipocytokine; |
| Background : | <p>The protein encoded by this gene is the fourth major glycoprotein of the platelet surface and serves as a receptor for thrombospondin in platelets and various cell lines. Since thrombospondins are widely distributed proteins involved in a variety of adhesive processes, this protein may have important functions as a cell adhesion molecule. It binds to collagen, thrombospondin, anionic phospholipids and oxidized LDL. It directly mediates cytoadherence of Plasmodium falciparum parasitized erythrocytes and it binds long chain fatty acids and may function in the transport and/or as a regulator of fatty acid transport. Mutations in this gene cause platelet glycoprotein deficiency. Multiple alternatively spliced transcript variants have been found for this gene. [provided by RefSeq, Feb 2014],</p> |
| Function : | <p>disease:Defects in CD36 are the cause of platelet glycoprotein IV deficiency [MIM:608404]; also known as CD36 deficiency. Platelet glycoprotein IV deficiency can be divided into 2 subgroups. The type I phenotype is characterized by platelets and monocytes/macrophages exhibiting complete CD36 deficiency. The type II phenotype lacks the surface expression of CD36 in platelets, but expression in monocytes/macrophages is near normal.,disease:Genetic variations in CD36 are associated with susceptibility to coronary heart disease type 7 (CHDS7) [MIM:610938].,function:Seems to have numerous potential physiological functions. Binds to collagen, thrombospondin, anionic phospholipids and oxidized LDL. May function as a cell adhesion molecule. Directly mediates cytoadherence of Plasmodium falciparum parasitized erythrocytes. Binds long chain fatty acids and may function in the transport and/or as a</p> |
| Subcellular Location : | Cell membrane ; Multi-pass membrane protein . Membrane raft . Golgi apparatus . Apical cell membrane . Upon ligand-binding, internalized through dynamin-dependent endocytosis. . |
| Expression : | Adipocyte,Liver,Mammary gland,Milk,Placenta,Platelet,Skeletal muscle, |
| Tag : | orthogonal,hot |
| Sort : | 1 |
| No3 : | ab133625 |

| | |
|------------------------|-------------------|
| No4 : | <u>1</u> |
| Host : | <u>Rabbit</u> |
| Modifications : | <u>Unmodified</u> |

Products Images



Western Blot analysis of MCF7, 4T1 cells using CD36 Polyclonal Antibody. Secondary antibody(catalog#:RS0002) was diluted at 1:20000



Immunohistochemical analysis of paraffin-embedded human Tonsil. 1, Antibody was diluted at 1:200(4° overnight). 2, Tris-EDTA,pH9.0 was used for antigen retrieval. 3,Secondary antibody was diluted at 1:200(room temperature, 30min).