

Integrin α 6 Polyclonal Antibody

Catalog No :	YT5590
Reactivity :	Human;Mouse;Rat
Applications :	WB;ELISA
Target :	Integrin α 6
Fields :	>>PI3K-Akt signaling pathway;>>Focal adhesion;>>ECM-receptor interaction;>>Cell adhesion molecules;>>Hematopoietic cell lineage;>>Regulation of actin cytoskeleton;>>Toxoplasmosis;>>Human papillomavirus infection;>>Pathways in cancer;>>Small cell lung cancer;>>Hypertrophic cardiomyopathy;>>Arrhythmogenic right ventricular cardiomyopathy;>>Dilated cardiomyopathy
Gene Name :	ITGA6
Protein Name :	Integrin alpha-6
Human Gene Id :	3655
Human Swiss Prot No :	P23229
Mouse Swiss Prot No :	Q61739
Immunogen :	The antiserum was produced against synthesized peptide derived from the Internal region of human ITGA6. AA range:901-950
Specificity :	Integrin α 6 Polyclonal Antibody detects endogenous levels of Integrin α 6 protein.
Formulation :	Liquid in PBS containing 50% glycerol, 0.5% BSA and 0.02% sodium azide.
Source :	Polyclonal, Rabbit,IgG
Dilution :	WB 1:500 - 1:2000. ELISA: 1:10000. Not yet tested in other applications.
Purification :	The antibody was affinity-purified from rabbit antiserum by affinity-chromatography using epitope-specific immunogen.

Concentration : 1 mg/ml

Storage Stability : -15°C to -25°C/1 year(Do not lower than -25°C)

Observed Band : 125kD

Cell Pathway : Focal adhesion;ECM-receptor interaction;Cell adhesion molecules (CAMs);Hematopoietic cell lineage;Regulates Actin and Cytoskeleton;Pathways in cancer;Small cell lung cancer;Hypertrophic cardiomyopathy

Background : integrin subunit alpha 6(ITGA6) Homo sapiens The gene encodes a member of the integrin alpha chain family of proteins. Integrins are heterodimeric integral membrane proteins composed of an alpha chain and a beta chain that function in cell surface adhesion and signaling. The encoded preproprotein is proteolytically processed to generate light and heavy chains that comprise the alpha 6 subunit. This subunit may associate with a beta 1 or beta 4 subunit to form an integrin that interacts with extracellular matrix proteins including members of the laminin family. The alpha 6 beta 4 integrin may promote tumorigenesis, while the alpha 6 beta 1 integrin may negatively regulate erbB2/HER2 signaling. Alternative splicing results in multiple transcript variants. [provided by RefSeq, Oct 2015],

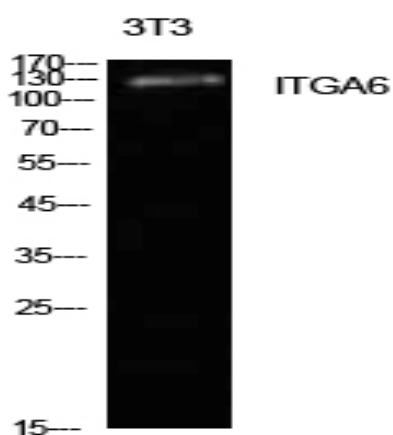
Function : alternative products:Additional isoforms seem to exist. There is a combination of at least four alternatively spliced domains, two extracellular (X1 and X2) and two cytoplasmic (A and B). So far detected are isoform Alpha-6X1A, isoform Alpha-6X1B and isoform Alpha-6X1X2A (minor). Experimental confirmation may be lacking for some isoforms,disease:Defects in ITGA6 are a cause of epidermolysis bullosa with pyloric atresia (EB-PA) [MIM:226730]; also known as aplasia cutis congenita with gastrointestinal atresia. EB-PA is an autosomal recessive disease characterized by mucocutaneous fragility and gastrointestinal atresia, which most commonly affects the pylorus.,function:Integrin alpha-6/beta-1 is a receptor for laminin on platelets. Integrin alpha-6/beta-4 is a receptor for laminin in epithelial cells and it plays a critical structural role in the hemidesmosome.,PTM:Isoforms containing segme

Subcellular Location : Cell membrane ; Single-pass type I membrane protein . Cell membrane ; Lipid-anchor .

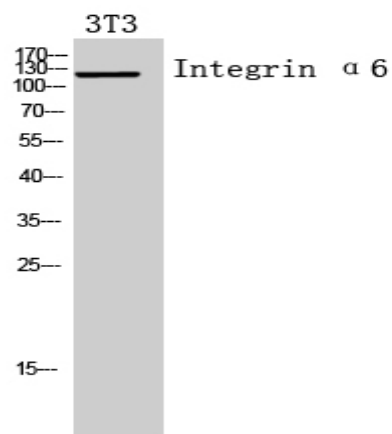
Expression : Integrin alpha-6/beta-4 is predominantly expressed by epithelia. Isoforms containing segment X1 are ubiquitously expressed. Isoforms containing segment X1X2 are expressed in heart, kidney, placenta, colon, duodenum, myoblasts and myotubes, and in a limited number of cell lines; they are always coexpressed with the ubiquitous isoform containing segment X1. In some tissues (e.g. Salivary gland), isoforms containing cytoplasmic segment A and isoforms containing segment B are detected while in others, only isoforms containing one cytoplasmic segment are found (segment A in epidermis and segment B in kidney). Processed integrin alpha-6: Expressed at low levels in normal prostate tissue with elevated levels in prostate cancer tissue (at protein level) (PubMed:15023541).

Sort :	8606
No4 :	1
Host :	Rabbit
Modifications :	Unmodified

Products Images



Western Blot analysis of NIH-3T3 cells using Integrin α 6 Polyclonal Antibody. Secondary antibody(catalog#:RS0002) was diluted at 1:20000



Western Blot analysis of 3T3 cells using Integrin α 6 Polyclonal Antibody. Secondary antibody(catalog#:RS0002) was diluted at 1:20000