

Nectin 1 Polyclonal Antibody

Catalog No :	YT5602
Reactivity :	Human;Mouse;Rat
Applications :	WB;ELISA
Target :	Nectin 1
Fields :	>>Cell adhesion molecules;>>Adherens junction;>>Herpes simplex virus 1 infection
Gene Name :	PVRL1
Protein Name :	Poliovirus receptor-related protein 1
Human Gene Id :	5818
Human Swiss Prot No :	Q15223
Mouse Gene Id :	58235
Mouse Swiss Prot No :	Q9JKF6
Immunogen :	The antiserum was produced against synthesized peptide derived from the Internal region of human PVRL1. AA range:81-130
Specificity :	Nectin 1 Polyclonal Antibody detects endogenous levels of Nectin 1 protein.
Formulation :	Liquid in PBS containing 50% glycerol, 0.5% BSA and 0.02% sodium azide.
Source :	Polyclonal, Rabbit,IgG
Dilution :	WB 1:500 - 1:2000. ELISA: 1:10000. Not yet tested in other applications.
Purification :	The antibody was affinity-purified from rabbit antiserum by affinity-chromatography using epitope-specific immunogen.
Concentration :	1 mg/ml

Storage Stability : -15°C to -25°C/1 year(Do not lower than -25°C)

Observed Band : 57kD

Cell Pathway : Cell adhesion molecules (CAMs);Adherens_Junction;

Background : This gene encodes an adhesion protein that plays a role in the organization of adherens junctions and tight junctions in epithelial and endothelial cells. The protein is a calcium(2+)-independent cell-cell adhesion molecule that belongs to the immunoglobulin superfamily and has 3 extracellular immunoglobulin-like loops, a single transmembrane domain (in some isoforms), and a cytoplasmic region. This protein acts as a receptor for glycoprotein D (gD) of herpes simplex viruses 1 and 2 (HSV-1, HSV-2), and pseudorabies virus (PRV) and mediates viral entry into epithelial and neuronal cells. Mutations in this gene cause cleft lip and palate/ectodermal dysplasia 1 syndrome (CLPED1) as well as non-syndromic cleft lip with or without cleft palate (CL/P). Alternative splicing results in multiple transcript variants encoding proteins with distinct C-termini. [provided by RefSeq, Oct 2009],

Function : disease:Defects in PVRL1 are the cause of ectodermal dysplasia Margarita Island type (EDMI) [MIM:225060]; also known as Zlotogora-Ogur syndrome, cleft lip/palate-ectodermal dysplasia syndrome (CLPED1) or ectodermal dysplasia 4. Ectodermal dysplasia defines a heterogeneous group of disorders due to abnormal development of two or more ectodermal structures. EDM1 is an autosomal recessive syndrome characterized by the association of cleft lip/palate, ectodermal dysplasia (sparse short and dry scalp hair, sparse eyebrows and eyelashes), and partial syndactyly of the fingers and/or toes. Two thirds of the patients do not manifest oral cleft but present with abnormal teeth and nails.,disease:Defects in PVRL1 are the cause of non-syndromic orofacial cleft type 7 (OFC7) [MIM:225060]. Non-syndromic orofacial cleft is a common birth defect consisting of cleft lips with or without cleft palate. Cle

Subcellular Location : [Isoform Alpha]: Cell membrane; Single-pass type I membrane protein. Cell junction, synapse, presynaptic cell membrane .; [Isoform Delta]: Cell membrane; Single-pass type I membrane protein.; [Isoform Gamma]: Secreted.

Expression : Brain,Plasma,

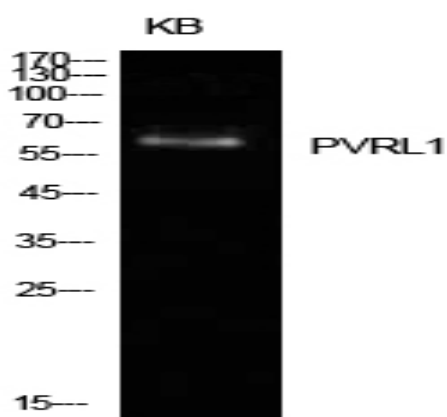
Sort : 10651

No4 : 1

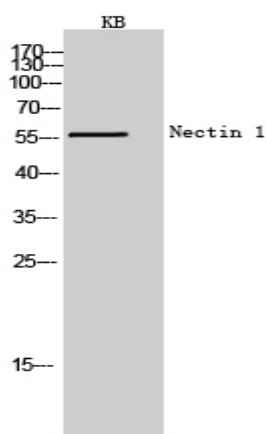
Host : Rabbit

Modifications : Unmodified

Products Images



Western Blot analysis of KB cells using Nectin 1 Polyclonal Antibody. Secondary antibody(catalog#:RS0002) was diluted at 1:20000



Western Blot analysis of KB cells using Nectin 1 Polyclonal Antibody. Secondary antibody(catalog#:RS0002) was diluted at 1:20000