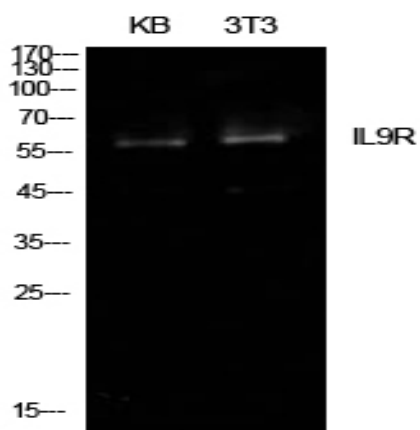


IL-9R Polyclonal Antibody

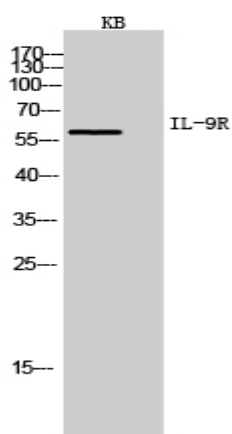
Catalog No :	YT5606
Reactivity :	Human;Mouse
Applications :	WB;ELISA
Target :	IL-9R
Fields :	>>Cytokine-cytokine receptor interaction;>>JAK-STAT signaling pathway;>>Hematopoietic cell lineage
Gene Name :	IL9R
Protein Name :	Interleukin-9 receptor
Human Gene Id :	3581
Human Swiss Prot No :	Q01113
Mouse Swiss Prot No :	Q01114
Immunogen :	The antiserum was produced against synthesized peptide derived from the Internal region of human IL9R. AA range:201-250
Specificity :	IL-9R Polyclonal Antibody detects endogenous levels of IL-9R protein.
Formulation :	Liquid in PBS containing 50% glycerol, 0.5% BSA and 0.02% sodium azide.
Source :	Polyclonal, Rabbit,IgG
Dilution :	WB 1:500 - 1:2000. ELISA: 1:10000. Not yet tested in other applications.
Purification :	The antibody was affinity-purified from rabbit antiserum by affinity-chromatography using epitope-specific immunogen.
Concentration :	1 mg/ml
Storage Stability :	-15°C to -25°C/1 year(Do not lower than -25°C)

Observed Band :	58kD
Cell Pathway :	Cytokine-cytokine receptor interaction;Jak_STAT;Hematopoietic cell lineage;
Background :	<p>The protein encoded by this gene is a cytokine receptor that specifically mediates the biological effects of interleukin 9 (IL9). The functional IL9 receptor complex requires this protein as well as the interleukin 2 receptor, gamma (IL2RG), a common gamma subunit shared by the receptors of many different cytokines. The ligand binding of this receptor leads to the activation of various JAK kinases and STAT proteins, which connect to different biologic responses. This gene is located at the pseudoautosomal regions of X and Y chromosomes. Genetic studies suggested an association of this gene with the development of asthma. Multiple pseudogenes on chromosome 9, 10, 16, and 18 have been described. Alternatively spliced transcript variants have been found for this gene. [provided by RefSeq, Jul 2008],</p>
Function :	<p>domain:The box 1 motif is required for JAK interaction and/or activation.,domain:The WSXWS motif appears to be necessary for proper protein folding and thereby efficient intracellular transport and cell-surface receptor binding.,function:This is a receptor for interleukin-9.,miscellaneous:The gene encoding for this protein is located in the pseudoautosomal region 2 (PAR2) of X and Y chromosomes.,similarity:Belongs to the type I cytokine receptor family. Type 4 subfamily.,similarity:Contains 1 fibronectin type-III domain.,</p>
Subcellular Location :	Cell membrane; Single-pass type I membrane protein. Secreted.
Expression :	Melanoma,
Sort :	8542
No4 :	1
Host :	Rabbit
Modifications :	Unmodified

Products Images



Western Blot analysis of KB, NIH-3T3 cells using IL-9R Polyclonal Antibody. Secondary antibody(catalog#:RS0002) was diluted at 1:20000



Western Blot analysis of KB cells using IL-9R Polyclonal Antibody. Secondary antibody(catalog#:RS0002) was diluted at 1:20000