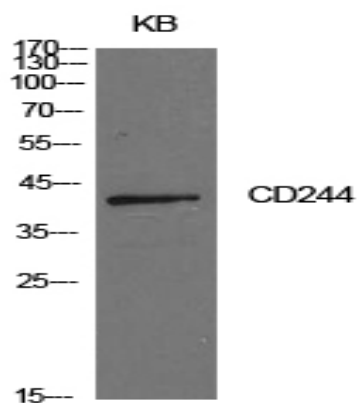


CD244 Polyclonal Antibody

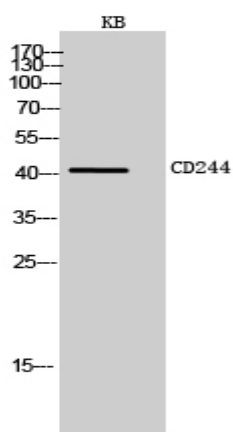
Catalog No :	YT5615
Reactivity :	Human;Rat;Mouse;
Applications :	WB;IHC;IF;ELISA
Target :	CD244
Fields :	>>Natural killer cell mediated cytotoxicity
Gene Name :	CD244
Protein Name :	Natural killer cell receptor 2B4
Human Gene Id :	51744
Human Swiss Prot No :	Q9BZW8
Mouse Swiss Prot No :	Q07763
Immunogen :	The antiserum was produced against synthesized peptide derived from the Internal region of human CD244. AA range:101-150
Specificity :	CD244 Polyclonal Antibody detects endogenous levels of CD244 protein.
Formulation :	Liquid in PBS containing 50% glycerol, 0.5% BSA and 0.02% sodium azide.
Source :	Polyclonal, Rabbit,IgG
Dilution :	WB 1:500 - 1:2000. IHC: 1:100-1:300. ELISA: 1:10000.. IF 1:50-200
Purification :	The antibody was affinity-purified from rabbit antiserum by affinity-chromatography using epitope-specific immunogen.
Concentration :	1 mg/ml
Storage Stability :	-15°C to -25°C/1 year(Do not lower than -25°C)

Observed Band :	42kD
Cell Pathway :	Natural killer cell mediated cytotoxicity;
Background :	This gene encodes a cell surface receptor expressed on natural killer (NK) cells (and some T cells) that mediate non-major histocompatibility complex (MHC) restricted killing. The interaction between NK-cell and target cells via this receptor is thought to modulate NK-cell cytolytic activity. Alternatively spliced transcript variants encoding different isoforms have been found for this gene.[provided by RefSeq, Oct 2009],
Function :	function:Modulate other receptor-ligand interactions to enhance leukocyte activation.,PTM:Phosphorylated.,similarity:Contains 2 Ig-like (immunoglobulin-like) domains.,subunit:Interacts with CD48. Following phosphorylation, it is able to recruit PTPN11/SHP-2 and SH2D1A/SAP. Binding of SH2D1A/SAP to CD244 prevents its association with PTPN11/SHP-2.,tissue specificity:Expressed in spleen, PBL, followed by lung, liver, testis and small intestine. Expressed not only in NK cells, but also on monocytes and basophils.,
Subcellular Location :	Membrane ; Single-pass type I membrane protein . Cell membrane . Receptor engagement results in a recruitment to lipid drafts essential for the subsequent tyrosine phosphorylation of the ITSMs. .
Expression :	Expressed in spleen, PBL, followed by lung, liver, testis and small intestine. Expressed in all natural killer (NK) cells, monocytes and basophils, TCR-gamma/delta+ T-cells, monocytes, basophils, and on a subset of CD8(+) T-cells.
Tag :	hot
Sort :	3493
No4 :	1
Host :	Rabbit
Modifications :	Unmodified

Products Images



Western Blot analysis of KB cells using CD244 Polyclonal Antibody. Secondary antibody(catalog#:RS0002) was diluted at 1:20000



Western Blot analysis of KB cells using CD244 Polyclonal Antibody. Secondary antibody(catalog#:RS0002) was diluted at 1:20000