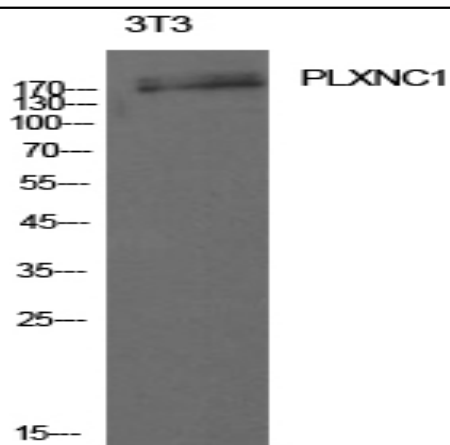


CD232 Polyclonal Antibody

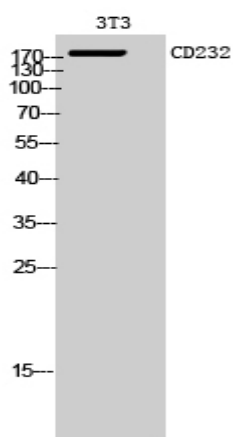
Catalog No :	YT5627
Reactivity :	Human;Mouse;Rat
Applications :	WB;ELISA
Target :	CD232
Fields :	>>Axon guidance
Gene Name :	PLXNC1
Protein Name :	Plexin-C1
Human Gene Id :	10154
Human Swiss Prot No :	O60486
Mouse Gene Id :	54712
Mouse Swiss Prot No :	Q9QZC2
Immunogen :	The antiserum was produced against synthesized peptide derived from the Internal region of human PLXNC1. AA range:811-860
Specificity :	CD232 Polyclonal Antibody detects endogenous levels of CD232 protein.
Formulation :	Liquid in PBS containing 50% glycerol, 0.5% BSA and 0.02% sodium azide.
Source :	Polyclonal, Rabbit,IgG
Dilution :	WB 1:500 - 1:2000. ELISA: 1:10000. Not yet tested in other applications.
Purification :	The antibody was affinity-purified from rabbit antiserum by affinity-chromatography using epitope-specific immunogen.
Concentration :	1 mg/ml

Storage Stability :	<u>-15°C to -25°C/1 year(Do not lower than -25°C)</u>
Observed Band :	<u>175kD</u>
Cell Pathway :	<u>Axon guidance;</u>
Background :	<u>This gene encodes a member of the plexin family. Plexins are transmembrane receptors for semaphorins, a large family of proteins that regulate axon guidance, cell motility and migration, and the immune response. The encoded protein and its ligand regulate melanocyte adhesion, and viral semaphorins may modulate the immune response by binding to this receptor. The encoded protein may be a tumor suppressor protein for melanoma. Alternatively spliced transcript variants have been observed for this gene. [provided by RefSeq, Jan 2011],</u>
Function :	<u>function:Receptor for vaccinia virus semaphorin A39R and for herpesvirus Sema protein. Binding of viral semaphorins triggers cellular responses leading to the rearrangement of the cytoskeleton and to secretion of IL6 and IL8.,PTM:N-glycosylated.,similarity:Belongs to the plexin family.,similarity:Contains 1 Sema domain.,tissue specificity:Detected in heart, brain, lung, spleen and placenta.,</u>
Subcellular Location :	<u>Membrane ; Single-pass type I membrane protein .</u>
Expression :	<u>Detected in heart, brain, lung, spleen and placenta.</u>
Sort :	<u>3483</u>
No4 :	<u>1</u>
Host :	<u>Rabbit</u>
Modifications :	<u>Unmodified</u>

Products Images



Western Blot analysis of 3T3 cells using CD232 Polyclonal Antibody. Antibody was diluted at 1:1000. Secondary antibody(catalog#:RS0002) was diluted at 1:20000



Western Blot analysis of 3T3 cells using CD232 Polyclonal Antibody diluted at 1:1000. Secondary antibody(catalog#:RS0002) was diluted at 1:20000