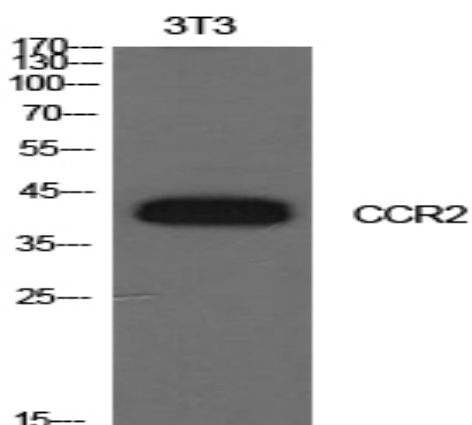


CD192 Polyclonal Antibody

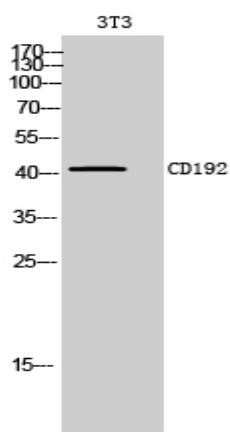
Catalog No :	YT5635
Reactivity :	Human;Rat;Mouse;
Applications :	WB;ELISA
Target :	CD192
Fields :	>>Cytokine-cytokine receptor interaction;>>Viral protein interaction with cytokine and cytokine receptor;>>Chemokine signaling pathway
Gene Name :	CCR2
Protein Name :	C-C chemokine receptor type 2
Human Gene Id :	729230
Human Swiss Prot No :	P41597
Mouse Gene Id :	12772
Mouse Swiss Prot No :	P51683
Rat Gene Id :	60463
Rat Swiss Prot No :	O55193
Immunogen :	The antiserum was produced against synthesized peptide derived from the N-terminal region of human CCR2. AA range:1-50
Specificity :	CD192 Polyclonal Antibody detects endogenous levels of CD192 protein.
Formulation :	Liquid in PBS containing 50% glycerol, 0.5% BSA and 0.02% sodium azide.
Source :	Polyclonal, Rabbit,IgG
Dilution :	WB 1:500 - 1:2000. ELISA: 1:10000. Not yet tested in other applications.

Purification :	The antibody was affinity-purified from rabbit antiserum by affinity-chromatography using epitope-specific immunogen.
Concentration :	1 mg/ml
Storage Stability :	-15°C to -25°C/1 year(Do not lower than -25°C)
Observed Band :	42kD
Cell Pathway :	Cytokine-cytokine receptor interaction;Chemokine;
Background :	This gene encodes two isoforms of a receptor for monocyte chemoattractant protein-1, a chemokine which specifically mediates monocyte chemotaxis. Monocyte chemoattractant protein-1 is involved in monocyte infiltration in inflammatory diseases such as rheumatoid arthritis as well as in the inflammatory response against tumors. The receptors encoded by this gene mediate agonist-dependent calcium mobilization and inhibition of adenylyl cyclase. This gene is located in the chemokine receptor gene cluster region. Two alternatively spliced transcript variants are expressed by the gene. [provided by RefSeq, Mar 2009],
Function :	function:Receptor for the MCP-1, MCP-3 and MCP-4 chemokines. Transduces a signal by increasing the intracellular calcium ions level. Alternative coreceptor with CD4 for HIV-1 infection.,online information:CC chemokine receptors entry,polymorphism:Variations in CCR2 are associated with relative resistance to immunodeficiency virus type 1 (resistance to HIV-1) [MIM:609423].,PTM:N-glycosylated.,similarity:Belongs to the G-protein coupled receptor 1 family.,subunit:Binds to HIV-1 Tat.,
Subcellular Location :	Cell membrane ; Multi-pass membrane protein . The chemoattractant receptors are distributed throughout the cell surface; after stimulation with a ligand, such as CCL2, they are rapidly recruited into microdomain clusters at the cell membrane. .
Expression :	Expressed by monocytes and IL2-activated NK cells.
Tag :	orthogonal,hot
Sort :	3438
No4 :	1
Host :	Rabbit
Modifications :	Unmodified

Products Images



Western Blot analysis of NIH-3T3 cells using CD192 Polyclonal Antibody. Secondary antibody(catalog#:RS0002) was diluted at 1:20000



Western Blot analysis of 3T3 cells using CD192 Polyclonal Antibody. Secondary antibody(catalog#:RS0002) was diluted at 1:20000