

**CD300d Polyclonal Antibody**

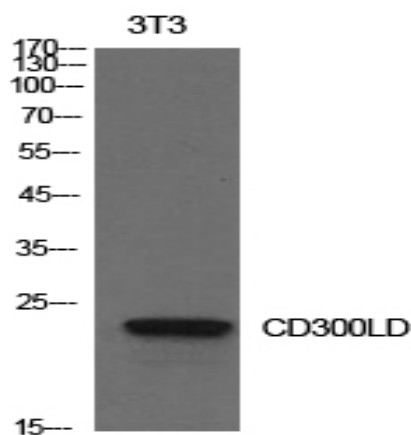
<b>Catalog No :</b>	YT5636
<b>Reactivity :</b>	Human;Mouse
<b>Applications :</b>	WB;ELISA
<b>Target :</b>	CD300d
<b>Gene Name :</b>	CD300LD
<b>Protein Name :</b>	CMRF35-like molecule 4
<b>Human Gene Id :</b>	100131439
<b>Human Swiss Prot No :</b>	Q6UXZ3
<b>Mouse Gene Id :</b>	217305
<b>Immunogen :</b>	The antiserum was produced against synthesized peptide derived from the Internal region of human CD300LD. AA range:61-110
<b>Specificity :</b>	CD300d Polyclonal Antibody detects endogenous levels of CD300d protein.
<b>Formulation :</b>	Liquid in PBS containing 50% glycerol, 0.5% BSA and 0.02% sodium azide.
<b>Source :</b>	Polyclonal, Rabbit,IgG
<b>Dilution :</b>	WB 1:500 - 1:2000. ELISA: 1:10000. Not yet tested in other applications.
<b>Purification :</b>	The antibody was affinity-purified from rabbit antiserum by affinity-chromatography using epitope-specific immunogen.
<b>Concentration :</b>	1 mg/ml
<b>Storage Stability :</b>	-15°C to -25°C/1 year(Do not lower than -25°C)
<b>Observed Band :</b>	22kD

---

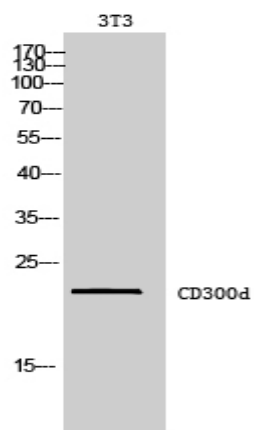
<b>Background :</b>	similarity:Belongs to the CD300 family.,similarity:Contains 1 Ig-like V-type (immunoglobulin-like) domain.,
<b>Function :</b>	similarity:Belongs to the CD300 family.,similarity:Contains 1 Ig-like V-type (immunoglobulin-like) domain.,
<b>Subcellular Location :</b>	Cell membrane ; Single-pass type I membrane protein . Cell surface localization requires the ITAM-bearing Fc receptor FCER1G to overcome ER retention.
<b>Expression :</b>	Expression seems restricted to cells of myeloid lineage.
<b>Sort :</b>	3518
<b>No4 :</b>	1
<b>Host :</b>	Rabbit
<b>Modifications :</b>	Unmodified

---

## Products Images



Western Blot analysis of NIH-3T3 cells using CD300d Polyclonal Antibody. Secondary antibody(catalog#:RS0002) was diluted at 1:20000



Western Blot analysis of 3T3 cells using CD300d Polyclonal Antibody. Secondary antibody(catalog#:RS0002) was diluted at 1:20000