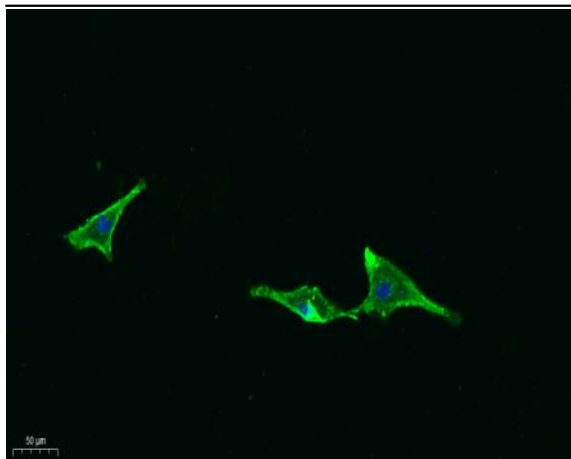


CD315 Polyclonal Antibody

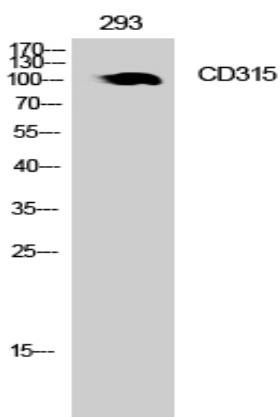
Catalog No :	YT5637
Reactivity :	Human;Mouse;Rat
Applications :	WB;IHC;IF;ELISA
Target :	CD315
Gene Name :	PTGFRN
Protein Name :	Prostaglandin F2 receptor negative regulator
Human Gene Id :	5738
Human Swiss Prot No :	Q9P2B2
Mouse Gene Id :	19221
Mouse Swiss Prot No :	Q9WV91
Rat Gene Id :	29602
Rat Swiss Prot No :	Q62786
Immunogen :	The antiserum was produced against synthesized peptide derived from the Internal region of human PTGFRN. AA range:601-650
Specificity :	CD315 Polyclonal Antibody detects endogenous levels of CD315 protein.
Formulation :	Liquid in PBS containing 50% glycerol, 0.5% BSA and 0.02% sodium azide.
Source :	Polyclonal, Rabbit,IgG
Dilution :	WB 1:500 - 1:2000. IHC: 1:100-300 ELISA: 1:20000. IF 1:100-300 Not yet tested in other applications.
Purification :	The antibody was affinity-purified from rabbit antiserum by affinity-chromatography using epitope-specific immunogen.

Concentration :	1 mg/ml
Storage Stability :	-15°C to -25°C/1 year(Do not lower than -25°C)
Observed Band :	98kD
Background :	function:Inhibits the binding of prostaglandin F2-alpha (PGF2-alpha) to its specific FP receptor, by decreasing the receptor number rather than the affinity constant. Functional coupling with the prostaglandin F2-alpha receptor seems to occur.,sequence caution:Translated as Gln.,similarity:Contains 6 Ig-like C2-type (immunoglobulin-like) domains.,subunit:Interacts with CD9 and CD81. Also seems to interact with CD63, CD82 and CD151.,
Function :	function:Inhibits the binding of prostaglandin F2-alpha (PGF2-alpha) to its specific FP receptor, by decreasing the receptor number rather than the affinity constant. Functional coupling with the prostaglandin F2-alpha receptor seems to occur.,sequence caution:Translated as Gln.,similarity:Contains 6 Ig-like C2-type (immunoglobulin-like) domains.,subunit:Interacts with CD9 and CD81. Also seems to interact with CD63, CD82 and CD151.,
Subcellular Location :	Endoplasmic reticulum membrane ; Single-pass type I membrane protein . Golgi apparatus, trans-Golgi network membrane ; Single-pass type I membrane protein .
Expression :	Brain,Embryo,Epithelium,Heart,Liver,PCR rescued clones,
Tag :	hot
Sort :	1417
No3 :	ab97567
No4 :	1
Host :	Rabbit
Modifications :	Unmodified

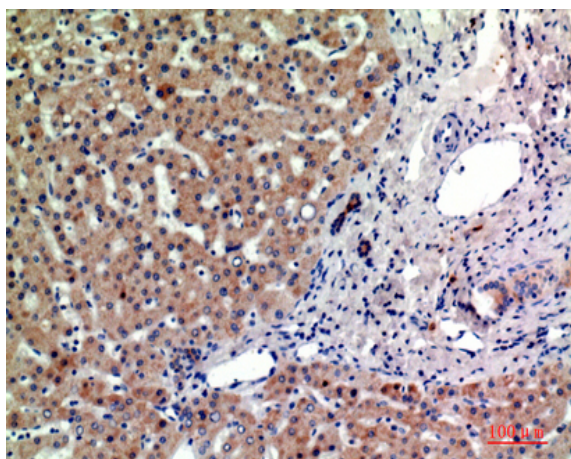
Products Images



Immunofluorescence analysis of A549. 1,primary Antibody was diluted at 1:200(4°C overnight). 2, Goat Anti Rabbit IgG (H&L) - Alexa Fluor 488 Secondary antibody was diluted at 1:1000(room temperature, 50min).3, Picture B: DAPI(blue) 10min.



Western Blot analysis of 293 cells using CD315 Polyclonal Antibody. Secondary antibody(catalog#:RS0002) was diluted at 1:20000



Immunohistochemical analysis of paraffin-embedded human-liver, antibody was diluted at 1:200