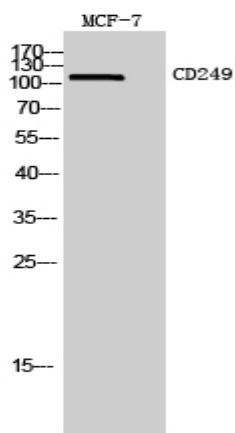


## CD249 Polyclonal Antibody

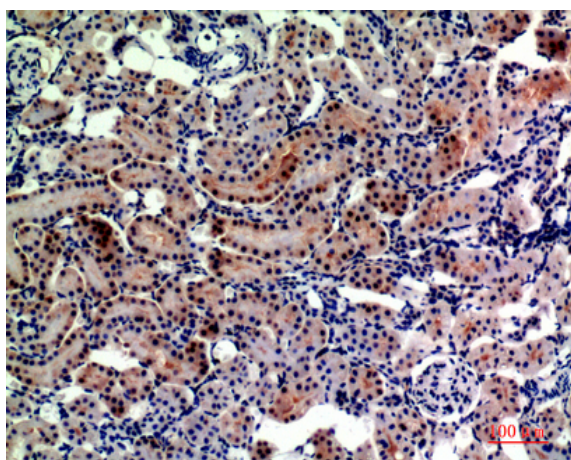
<b>Catalog No :</b>	YT5639
<b>Reactivity :</b>	Human;Mouse;Rat
<b>Applications :</b>	WB;IHC;IF;ELISA
<b>Target :</b>	CD249
<b>Fields :</b>	>>Renin-angiotensin system
<b>Gene Name :</b>	ENPEP
<b>Protein Name :</b>	Glutamyl aminopeptidase
<b>Human Gene Id :</b>	2028
<b>Human Swiss Prot No :</b>	Q07075
<b>Mouse Gene Id :</b>	13809
<b>Mouse Swiss Prot No :</b>	P16406
<b>Rat Gene Id :</b>	64017
<b>Rat Swiss Prot No :</b>	P50123
<b>Immunogen :</b>	The antiserum was produced against synthesized peptide derived from the Internal region of human ENPEP. AA range:671-720
<b>Specificity :</b>	CD249 Polyclonal Antibody detects endogenous levels of CD249 protein.
<b>Formulation :</b>	Liquid in PBS containing 50% glycerol, 0.5% BSA and 0.02% sodium azide.
<b>Source :</b>	Polyclonal, Rabbit,IgG
<b>Dilution :</b>	WB 1:500 - 1:2000. IHC: 1:100-1:300. ELISA: 1:10000.. IF 1:50-200

<b>Purification :</b>	The antibody was affinity-purified from rabbit antiserum by affinity-chromatography using epitope-specific immunogen.
<b>Concentration :</b>	1 mg/ml
<b>Storage Stability :</b>	-15°C to -25°C/1 year(Do not lower than -25°C)
<b>Observed Band :</b>	110kD
<b>Cell Pathway :</b>	Renin-angiotensin system;
<b>Background :</b>	catalytic activity:Release of N-terminal glutamate (and to a lesser extent aspartate) from a peptide.,cofactor:Binds 1 zinc ion per subunit.,function:Appears to have a role in the catabolic pathway of the renin-angiotensin system. Probably plays a role in regulating growth and differentiation of early B-lineage cells.,similarity:Belongs to the peptidase M1 family.,subunit:Homodimer; disulfide-linked.,tissue specificity:Expressed by epithelial cells of the proximal tubule cells and the glomerulus of the nephron. Also found in a variety of other tissues.,
<b>Function :</b>	catalytic activity:Release of N-terminal glutamate (and to a lesser extent aspartate) from a peptide.,cofactor:Binds 1 zinc ion per subunit.,function:Appears to have a role in the catabolic pathway of the renin-angiotensin system. Probably plays a role in regulating growth and differentiation of early B-lineage cells.,similarity:Belongs to the peptidase M1 family.,subunit:Homodimer; disulfide-linked.,tissue specificity:Expressed by epithelial cells of the proximal tubule cells and the glomerulus of the nephron. Also found in a variety of other tissues.,
<b>Subcellular Location :</b>	Cell membrane ; Single-pass type II membrane protein.
<b>Expression :</b>	Expressed in choriocarcinoma cancer cell lines (at protein level) (PubMed:10692253). Expressed by epithelial cells of the proximal tubule cells and the glomerulus of the nephron. Also found in a variety of other tissues.
<b>Tag :</b>	hot
<b>Sort :</b>	3496
<b>No4 :</b>	1
<b>Host :</b>	Rabbit
<b>Modifications :</b>	Unmodified

## Products Images



Western Blot analysis of MCF7 cells using CD249 Polyclonal Antibody. Secondary antibody(catalog#:RS0002) was diluted at 1:20000



Immunohistochemical analysis of paraffin-embedded rat-kidney, antibody was diluted at 1:200