

CD206 Polyclonal Antibody

Catalog No :	YT5640
Reactivity :	Human;Mouse;Rat
Applications :	WB;IHC;IF;ELISA
Target :	CD206
Fields :	>>Phagosome;>>Tuberculosis
Gene Name :	MRC1
Protein Name :	Macrophage mannose receptor 1
Human Gene Id :	4360
Human Swiss Prot No :	P22897
Mouse Gene Id :	17533
Mouse Swiss Prot No :	Q61830
Immunogen :	The antiserum was produced against synthesized peptide derived from the Internal region of human MRC1. AA range:341-390
Specificity :	CD206 Polyclonal Antibody detects endogenous levels of CD206 protein.
Formulation :	Liquid in PBS containing 50% glycerol, 0.5% BSA and 0.02% sodium azide.
Source :	Polyclonal, Rabbit,IgG
Dilution :	WB 1:500 - 1:2000. IHC: 1:100-300 ELISA: 1:20000. IF 1:100-300 Not yet tested in other applications.
Purification :	The antibody was affinity-purified from rabbit antiserum by affinity-chromatography using epitope-specific immunogen.
Concentration :	1 mg/ml

Storage Stability : -15°C to -25°C/1 year(Do not lower than -25°C)

Observed Band : 170kD

Background : The recognition of complex carbohydrate structures on glycoproteins is an important part of several biological processes, including cell-cell recognition, serum glycoprotein turnover, and neutralization of pathogens. The protein encoded by this gene is a type I membrane receptor that mediates the endocytosis of glycoproteins by macrophages. The protein has been shown to bind high-mannose structures on the surface of potentially pathogenic viruses, bacteria, and fungi so that they can be neutralized by phagocytic engulfment.[provided by RefSeq, Sep 2015],

Function : function:Mediates the endocytosis of glycoproteins by macrophages. Binds both sulfated and non-sulfated polysaccharide chains. Acts as phagocytic receptor for bacteria, fungi and other pathogens.,miscellaneous:CRDs 1-3 have at most very weak affinity for carbohydrate. CRD 4 shows the highest affinity binding and has multispecificity for a variety of monosaccharides. At least 3 CRDs (4, 5, and 7) are required for high affinity binding and endocytosis of multivalent glycoconjugates.,online information:Macrophage mannose receptor,similarity:Contains 1 fibronectin type-II domain.,similarity:Contains 1 ricin B-type lectin domain.,similarity:Contains 8 C-type lectin domains.,

Subcellular Location : Endosome membrane ; Single-pass type I membrane protein . Cell membrane ; Single-pass type I membrane protein .

Expression : Milk,Placenta,Testis,

Tag : orthogonal,hot

Sort : 1

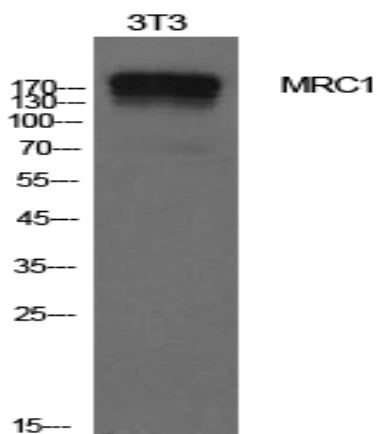
No3 : ab64693

No4 : 1

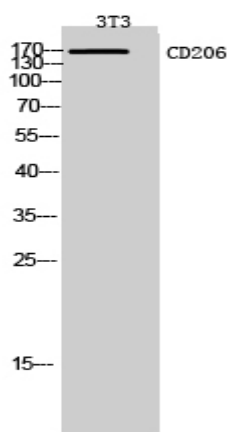
Host : Rabbit

Modifications : Unmodified

Products Images



Western Blot analysis of NIH-3T3 cells using CD206 Polyclonal Antibody. Secondary antibody(catalog#:RS0002) was diluted at 1:20000



Western Blot analysis of 3T3 cells using CD206 Polyclonal Antibody. Secondary antibody(catalog#:RS0002) was diluted at 1:20000