

Ebi3 Polyclonal Antibody

Catalog No :	YT5645
Reactivity :	Human;Mouse
Applications :	WB;ELISA
Target :	Ebi3
Fields :	>>Cytokine-cytokine receptor interaction;>>Th17 cell differentiation
Gene Name :	EBI3
Protein Name :	Interleukin-27 subunit beta
Human Gene Id :	10148
Human Swiss Prot No :	Q14213
Mouse Gene Id :	50498
Mouse Swiss Prot No :	O35228
Immunogen :	The antiserum was produced against synthesized peptide derived from the Internal region of human EBI3. AA range:101-150
Specificity :	Ebi3 Polyclonal Antibody detects endogenous levels of Ebi3 protein.
Formulation :	Liquid in PBS containing 50% glycerol, 0.5% BSA and 0.02% sodium azide.
Source :	Polyclonal, Rabbit,IgG
Dilution :	WB 1:500 - 1:2000. ELISA: 1:10000. Not yet tested in other applications.
Purification :	The antibody was affinity-purified from rabbit antiserum by affinity-chromatography using epitope-specific immunogen.
Concentration :	1 mg/ml

Storage Stability : -15°C to -25°C/1 year(Do not lower than -25°C)

Observed Band : 25kD

Background : This gene was identified by its induced expression in B lymphocytes in response Epstein-Barr virus infection. It encodes a secreted glycoprotein belonging to the hematopoietin receptor family, and heterodimerizes with a 28 kDa protein to form interleukin 27 (IL-27). IL-27 regulates T cell and inflammatory responses, in part by activating the Jak/STAT pathway of CD4+ T cells. [provided by RefSeq, Sep 2008],

Function : function:Cytokine with pro- and anti-inflammatory properties, that can regulate T helper cell development, suppress T-cell proliferation, stimulate cytotoxic T cell activity, induce isotype switching in B-cells, and that has diverse effects on innate immune cells. Among its target cells are CD4 T helper cells which can differentiate in type 1 effector cells (TH1), type 2 effector cells (TH2) and IL17 producing helper T-cells (TH17). It drives rapid clonal expansion of naive but not memory CD4 T-cells. It also strongly synergizes with IL-12 to trigger interferon-gamma/IFN-gamma production of naive CD4 T-cells, binds to the cytokine receptor WSX-1/TCCR. Another important role of IL27 is its antitumor activity as well as its antiangiogenic activity with activation of production of antiangiogenic chemokines.,induction:By EBV.,online information:Interleukin-27 entry,similarity:Belongs to the

Subcellular Location : Secreted .

Expression : B-cell,Pancreas,

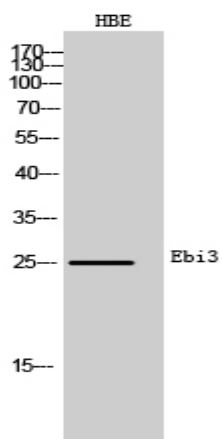
Sort : 5373

No4 : 1

Host : Rabbit

Modifications : Unmodified

Products Images



Western Blot analysis of HBE cells using Ebi3 Polyclonal Antibody. Secondary antibody(catalog#:RS0002) was diluted at 1:20000