

## GDF-3 Polyclonal Antibody

<b>Catalog No :</b>	YT5646
<b>Reactivity :</b>	Human;Mouse
<b>Applications :</b>	WB;ELISA
<b>Target :</b>	GDF-3
<b>Fields :</b>	>>Cytokine-cytokine receptor interaction
<b>Gene Name :</b>	GDF3
<b>Protein Name :</b>	Growth/differentiation factor 3
<b>Human Gene Id :</b>	9573
<b>Human Swiss Prot No :</b>	Q9NR23
<b>Mouse Gene Id :</b>	14562
<b>Mouse Swiss Prot No :</b>	Q07104
<b>Immunogen :</b>	Synthesized peptide derived from Growth/differentiation factor 3 at AA range: 311-360
<b>Specificity :</b>	GDF-3 Polyclonal Antibody detects endogenous levels of GDF-3 protein.
<b>Formulation :</b>	Liquid in PBS containing 50% glycerol, 0.5% BSA and 0.02% sodium azide.
<b>Source :</b>	Polyclonal, Rabbit,IgG
<b>Dilution :</b>	WB 1:500 - 1:2000. ELISA: 1:10000. Not yet tested in other applications.
<b>Purification :</b>	The antibody was affinity-purified from rabbit antiserum by affinity-chromatography using epitope-specific immunogen.
<b>Concentration :</b>	1 mg/ml

**Storage Stability :** -15°C to -25°C/1 year(Do not lower than -25°C)

**Observed Band :** 41kD

**Background :** This gene encodes a secreted ligand of the TGF-beta (transforming growth factor-beta) superfamily of proteins. Ligands of this family bind various TGF-beta receptors leading to recruitment and activation of SMAD family transcription factors that regulate gene expression. The encoded preproprotein is proteolytically processed to generate each subunit of the disulfide-linked homodimer. This protein plays a role ocular and skeletal development. Mutations in this gene are associated with microphthalmia, coloboma, and skeletal abnormalities in human patients. [provided by RefSeq, Aug 2016],

**Function :** online information:GDF3 entry,similarity:Belongs to the TGF-beta family.,subunit:Homodimer or heterodimer (Potential). But, in contrast to other members of this family, cannot be disulfide-linked.,

**Subcellular Location :** Secreted . Cytoplasm . Mainly accumulated in the cytoplasm. .

**Expression :** Kidney,

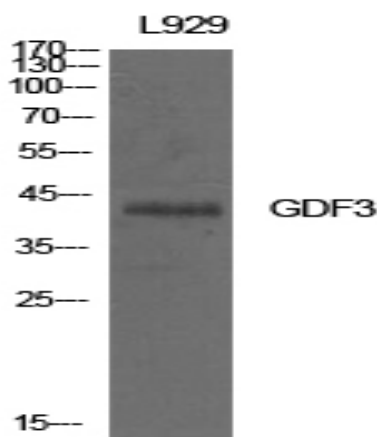
**Sort :** 6529

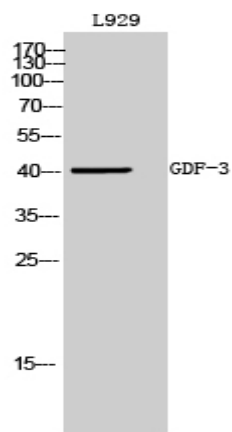
**No4 :** 1

**Host :** Rabbit

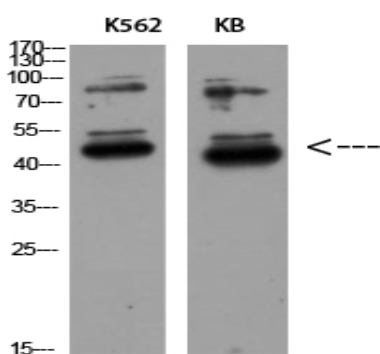
**Modifications :** Unmodified

## Products Images





Western Blot analysis of L929 cells using GDF-3 Polyclonal Antibody diluted at 1:500. Secondary antibody(catalog#:RS0002) was diluted at 1:20000



Western Blot analysis of K562 KB using GDF-3 Polyclonal Antibody diluted at 1:500. Secondary antibody(catalog#:RS0002) was diluted at 1:20000