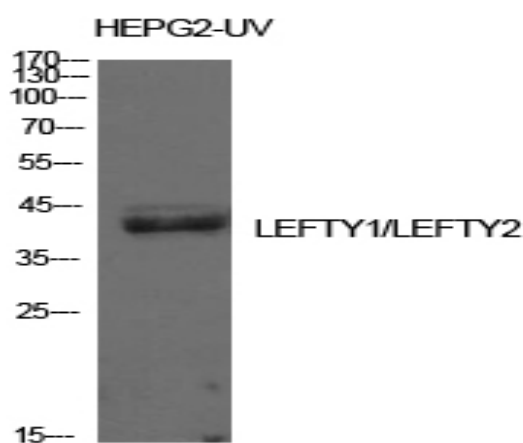


Lefty Polyclonal Antibody

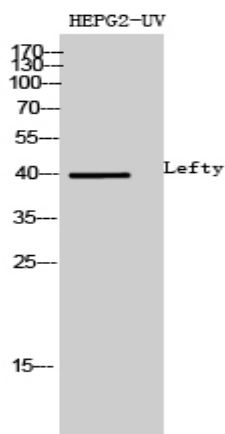
Catalog No :	YT5647
Reactivity :	Human;Mouse
Applications :	WB;IHC
Target :	Lefty
Fields :	>>TGF-beta signaling pathway;>>Signaling pathways regulating pluripotency of stem cells
Gene Name :	LEFTY1/LEFTY2
Protein Name :	Left-right determination factor 1/Left-right determination factor 2
Human Gene Id :	10637/7044
Human Swiss Prot No :	O75610/O00292
Mouse Gene Id :	13590/320202
Immunogen :	The antiserum was produced against synthesized peptide derived from the C-terminal region of human LEFTY1/LEFTY2. AA range:301-350
Specificity :	Lefty Polyclonal Antibody detects endogenous levels of Lefty protein.
Formulation :	Liquid in PBS containing 50% glycerol, 0.5% BSA and 0.02% sodium azide.
Source :	Polyclonal, Rabbit,IgG
Dilution :	WB 1:500-2000;IHC 1:50-300
Purification :	The antibody was affinity-purified from rabbit antiserum by affinity-chromatography using epitope-specific immunogen.
Concentration :	1 mg/ml
Storage Stability :	-15°C to -25°C/1 year(Do not lower than -25°C)

Observed Band :	40kD
Cell Pathway :	TGF-beta;
Background :	This gene encodes a secreted ligand of the TGF-beta (transforming growth factor-beta) superfamily of proteins. Ligands of this family bind various TGF-beta receptors leading to recruitment and activation of SMAD family transcription factors that regulate gene expression. The encoded preproprotein is proteolytically processed to generate the mature protein, which plays a role in left-right asymmetry determination of organ systems during development. This gene is closely linked to both a related family member and a related pseudogene. [provided by RefSeq, Aug 2016],
Function :	function:Required for left-right axis determination as a regulator of LEFTY2 and NODAL.,PTM:The processing of the protein may also occur at the second R-X-X-R site located at AA 132-135. Processing appears to be regulated in a cell-type specific manner.,similarity:Belongs to the TGF-beta family.,
Subcellular Location :	Secreted.
Expression :	Colon,Pancreas,Spleen,Teratocarcinoma,
Sort :	9165
No4 :	1
Host :	Rabbit
Modifications :	Unmodified

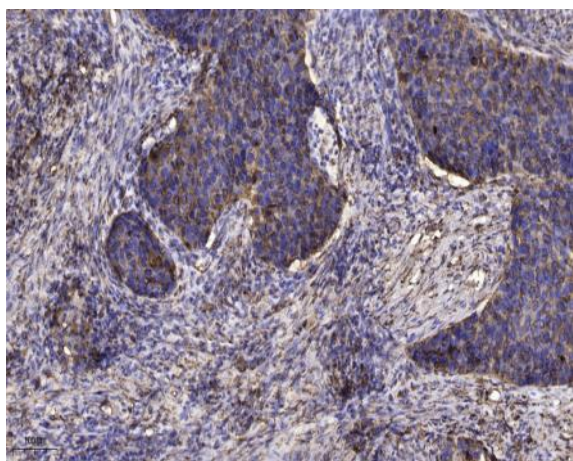
Products Images



Western Blot analysis of HepG2-UV cells using Lefty Polyclonal Antibody. Antibody was diluted at 1:500. Secondary antibody(catalog#:RS0002) was diluted at 1:20000



Western Blot analysis of HEPG2-UV cells using Lefty Polyclonal Antibody diluted at 1:500. Secondary antibody(catalog#:RS0002) was diluted at 1:20000



Immunohistochemical analysis of paraffin-embedded human Squamous cell carcinoma of lung. 1, Antibody was diluted at 1:200(4° overnight). 2, Tris-EDTA,pH9.0 was used for antigen retrieval. 3,Secondary antibody was diluted at 1:200(room temperature, 45min).