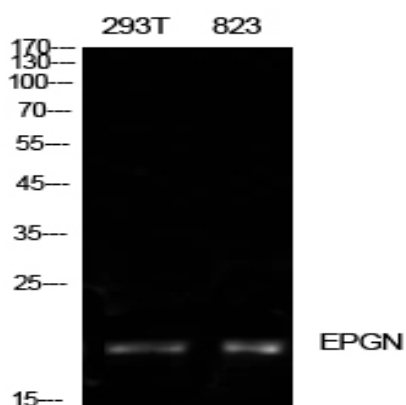


## Epigen Polyclonal Antibody

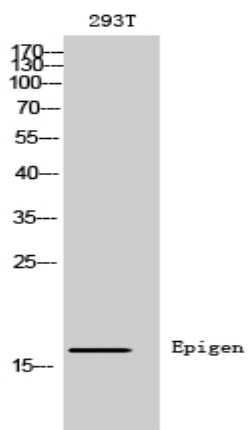
<b>Catalog No :</b>	YT5656
<b>Reactivity :</b>	Human;Mouse
<b>Applications :</b>	WB;ELISA
<b>Target :</b>	Epigen
<b>Gene Name :</b>	EPGN
<b>Protein Name :</b>	Epigen
<b>Human Gene Id :</b>	255324
<b>Human Swiss Prot No :</b>	Q6UW88
<b>Mouse Gene Id :</b>	71920
<b>Mouse Swiss Prot No :</b>	Q924X1
<b>Immunogen :</b>	The antiserum was produced against synthesized peptide derived from the Internal region of human EPGN. AA range:11-60
<b>Specificity :</b>	Epigen Polyclonal Antibody detects endogenous levels of Epigen protein.
<b>Formulation :</b>	Liquid in PBS containing 50% glycerol, 0.5% BSA and 0.02% sodium azide.
<b>Source :</b>	Polyclonal, Rabbit,IgG
<b>Dilution :</b>	WB 1:500 - 1:2000. ELISA: 1:10000. Not yet tested in other applications.
<b>Purification :</b>	The antibody was affinity-purified from rabbit antiserum by affinity-chromatography using epitope-specific immunogen.
<b>Concentration :</b>	1 mg/ml
<b>Storage Stability :</b>	-15°C to -25°C/1 year(Do not lower than -25°C)

**Observed Band :** 17kD**Background :** The protein encoded by this gene is a member of the epidermal growth factor family. Members of this family are ligands for the epidermal growth factor receptor and play a role in cell survival, proliferation and migration. This protein has been reported to have high mitogenic activity but low affinity for its receptor. Expression of this transcript and protein have been reported in cancer specimens of the breast, bladder, and prostate. Alternative splicing results in multiple transcript variants. [provided by RefSeq, Aug 2012],**Function :** function:Promotes the growth of epithelial cells. May stimulate the phosphorylation of EGFR and mitogen-activated protein kinases.,similarity:Contains 1 EGF-like domain.,**Subcellular Location :** [Isoform 1]: Membrane ; Single-pass type I membrane protein .; [Isoform 2]: Membrane ; Single-pass type I membrane protein .; [Isoform 3]: Secreted .; [Isoform 4]: Secreted .; [Isoform 5]: Secreted .; [Isoform 6]: Secreted .**Sort :** 5670**No4 :** 1**Host :** Rabbit**Modifications :** Unmodified

## Products Images



Western Blot analysis of 293T, 823 cells using Epigen Polyclonal Antibody. Antibody was diluted at 1:500. Secondary antibody(catalog#:RS0002) was diluted at 1:20000



Western Blot analysis of 293T cells using Epigen Polyclonal Antibody diluted at 1:500. Secondary antibody(catalog#:RS0002) was diluted at 1:20000