

## SR-1D Polyclonal Antibody

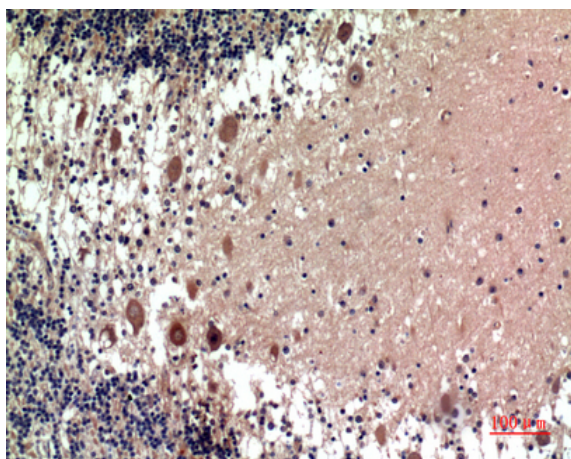
<b>Catalog No :</b>	YT5668
<b>Reactivity :</b>	Human;Mouse;Rat
<b>Applications :</b>	WB;IHC;IF;ELISA
<b>Target :</b>	SR-1D
<b>Fields :</b>	>>cAMP signaling pathway;>>Neuroactive ligand-receptor interaction;>>Serotonergic synapse;>>Taste transduction
<b>Gene Name :</b>	HTR1D
<b>Protein Name :</b>	5-hydroxytryptamine receptor 1D
<b>Human Gene Id :</b>	3352
<b>Human Swiss Prot No :</b>	P28221
<b>Mouse Gene Id :</b>	15552
<b>Mouse Swiss Prot No :</b>	Q61224
<b>Rat Gene Id :</b>	25323
<b>Rat Swiss Prot No :</b>	P28565
<b>Immunogen :</b>	Synthesized peptide derived from SR-1D . at AA range: 120-200
<b>Specificity :</b>	SR-1D Polyclonal Antibody detects endogenous levels of SR-1D protein.
<b>Formulation :</b>	Liquid in PBS containing 50% glycerol, 0.5% BSA and 0.02% sodium azide.
<b>Source :</b>	Polyclonal, Rabbit,IgG
<b>Dilution :</b>	WB 1:500 - 1:2000. IHC: 1:100-1:300. ELISA: 1:10000.. IF 1:50-200

<b>Purification :</b>	The antibody was affinity-purified from rabbit antiserum by affinity-chromatography using epitope-specific immunogen.
<b>Concentration :</b>	1 mg/ml
<b>Storage Stability :</b>	-15°C to -25°C/1 year(Do not lower than -25°C)
<b>Observed Band :</b>	41kD
<b>Cell Pathway :</b>	Neuroactive ligand-receptor interaction;
<b>Background :</b>	function:This is one of the several different receptors for 5-hydroxytryptamine (serotonin), a biogenic hormone that functions as a neurotransmitter, a hormone, and a mitogen. The activity of this receptor is mediated by G proteins that inhibit adenylate cyclase activity.,similarity:Belongs to the G-protein coupled receptor 1 family.,
<b>Function :</b>	function:This is one of the several different receptors for 5-hydroxytryptamine (serotonin), a biogenic hormone that functions as a neurotransmitter, a hormone, and a mitogen. The activity of this receptor is mediated by G proteins that inhibit adenylate cyclase activity.,similarity:Belongs to the G-protein coupled receptor 1 family.,
<b>Subcellular Location :</b>	Cell membrane ; Multi-pass membrane protein .
<b>Expression :</b>	Detected in brain neocortex and caudate nucleus (at protein level).
<b>Tag :</b>	hot
<b>Sort :</b>	16575
<b>No4 :</b>	1
<b>Host :</b>	Rabbit
<b>Modifications :</b>	Unmodified

## Products Images



Western blot analysis of HEPG2 823 293T AD293 HELA using SR-1D antibody. Antibody was diluted at 1:500. Secondary antibody(catalog#:RS0002) was diluted at 1:20000



Immunohistochemical analysis of paraffin-embedded human-brain, antibody was diluted at 1:100