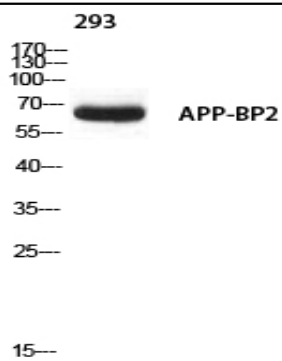


APP-BP2 Polyclonal Antibody

Catalog No :	YT5674
Reactivity :	Human;Mouse;Rat
Applications :	WB;ELISA
Target :	APP-BP2
Gene Name :	APPBP2
Protein Name :	Amyloid protein-binding protein 2
Human Gene Id :	10513
Human Swiss Prot No :	Q92624
Mouse Gene Id :	66884
Mouse Swiss Prot No :	Q9DAX9
Rat Gene Id :	303396
Rat Swiss Prot No :	A5HK05
Immunogen :	Synthesized peptide derived from APP-BP2 . at AA range: 390-470
Specificity :	APP-BP2 Polyclonal Antibody detects endogenous levels of APP-BP2 protein.
Formulation :	Liquid in PBS containing 50% glycerol, 0.5% BSA and 0.02% sodium azide.
Source :	Polyclonal, Rabbit,IgG
Dilution :	WB 1:500 - 1:2000. ELISA: 1:10000. Not yet tested in other applications.
Purification :	The antibody was affinity-purified from rabbit antiserum by affinity-chromatography using epitope-specific immunogen.

Concentration :	1 mg/ml
Storage Stability :	-15°C to -25°C/1 year(Do not lower than -25°C)
Observed Band :	67kD
Background :	The protein encoded by this gene interacts with microtubules and is functionally associated with beta-amyloid precursor protein transport and/or processing. The beta-amyloid precursor protein is a cell surface protein with signal-transducing properties, and it is thought to play a role in the pathogenesis of Alzheimer's disease. The encoded protein may be involved in regulating cell death. This gene has been found to be highly expressed in breast cancer. Alternative splicing results in multiple transcript variants. [provided by RefSeq, Sep 2013],
Function :	function:May play a role in intracellular protein transport. May be involved in the translocation of APP along microtubules toward the cell surface.,PTM:Rapidly degraded by the proteasome upon overexpression of a C-terminal fragment of APP.,similarity:Contains 8 TPR repeats.,subcellular location:Associated with membranes and microtubules.,subunit:Binds APP.,
Subcellular Location :	Nucleus . Cytoplasm, cytoskeleton . Membrane ; Peripheral membrane protein . Associated with membranes and microtubules. .
Expression :	Bone marrow,Cervix carcinoma,Skin,
Sort :	2173
No4 :	1
Host :	Rabbit
Modifications :	Unmodified

Products Images



Western blot analysis of 293 using APP-BP2 antibody.
Secondary antibody(catalog#:RS0002) was diluted at 1:20000