

## NHERF-2 Polyclonal Antibody

<b>Catalog No :</b>	YT5676
<b>Reactivity :</b>	Human;Mouse;Rat
<b>Applications :</b>	WB;ELISA
<b>Target :</b>	NHERF-2
<b>Fields :</b>	>>Aldosterone-regulated sodium reabsorption
<b>Gene Name :</b>	SLC9A3R2
<b>Protein Name :</b>	Na(+)/H(+) exchange regulatory cofactor NHE-RF2
<b>Human Gene Id :</b>	9351
<b>Human Swiss Prot No :</b>	Q15599
<b>Mouse Gene Id :</b>	65962
<b>Mouse Swiss Prot No :</b>	Q9JHL1
<b>Rat Gene Id :</b>	116501
<b>Rat Swiss Prot No :</b>	Q920G2
<b>Immunogen :</b>	Synthesized peptide derived from NHERF-2 . at AA range: 20-100
<b>Specificity :</b>	NHERF-2 Polyclonal Antibody detects endogenous levels of NHERF-2 protein.
<b>Formulation :</b>	Liquid in PBS containing 50% glycerol, 0.5% BSA and 0.02% sodium azide.
<b>Source :</b>	Polyclonal, Rabbit,IgG
<b>Dilution :</b>	WB 1:500 - 1:2000. ELISA: 1:10000. Not yet tested in other applications.
<b>Purification :</b>	The antibody was affinity-purified from rabbit antiserum by affinity-

chromatography using epitope-specific immunogen.

---

**Concentration :** 1 mg/ml

---

**Storage Stability :** -15°C to -25°C/1 year(Do not lower than -25°C)

---

**Observed Band :** 37kD

---

**Cell Pathway :** Aldosterone-regulated sodium reabsorption;

---

**Background :** This gene encodes a member of the NHERF family of PDZ scaffolding proteins. These proteins mediate many cellular processes by binding to and regulating the membrane expression and protein-protein interactions of membrane receptors and transport proteins. The encoded protein plays a role in intestinal sodium absorption by regulating the activity of the sodium/hydrogen exchanger 3, and may also regulate the cystic fibrosis transmembrane regulator (CFTR) ion channel. Alternatively spliced transcript variants encoding multiple isoforms have been observed for this gene. [provided by RefSeq, Nov 2011],

---

**Function :** function:Scaffold protein that connects plasma membrane proteins with members of the ezrin/moesin/radixin family and thereby helps to link them to the actin cytoskeleton and to regulate their surface expression. Necessary for cAMP-mediated phosphorylation and inhibition of SLC9A3. May also act as scaffold protein in the nucleus.,similarity:Contains 2 PDZ (DHR) domains.,subcellular location:Nuclear, in a punctate pattern.,subunit:Homodimer, and heterodimer with SLC9A3R1. Binds PODXL and PDZK1 (By similarity). Binds ADRB2, SLC9A3, P2RY1, P2YR2, SRY, RDX and LPAR2.,tissue specificity:Widely expressed.,

---

**Subcellular Location :** Endomembrane system ; Peripheral membrane protein . Nucleus . Apical cell membrane . Localizes with EZR and PODXL at the apical cell membrane of glomerular epithelium cells and the sides of the food processes (By similarity). Nuclear, in a punctate pattern. .

---

**Expression :** Widely expressed.

---

**Sort :** 10842

---

**No4 :** 1

---

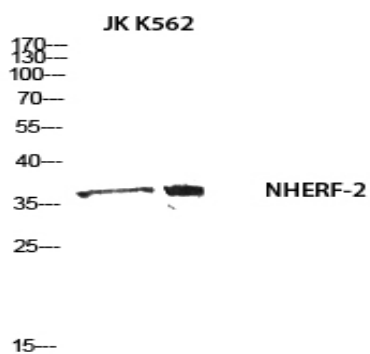
**Host :** Rabbit

---

**Modifications :** Unmodified

---

## Products Images



Western blot analysis of JK K562 using NHERF-2 antibody.  
Secondary antibody(catalog#:RS0002) was diluted at 1:20000