

SEC22B Polyclonal Antibody

Catalog No :	YT5680
Reactivity :	Human;Mouse;Rat
Applications :	WB;IHC;IF;ELISA
Target :	SEC22B
Fields :	>>SNARE interactions in vesicular transport;>>Phagosome;>>Legionellosis
Gene Name :	SEC22B
Protein Name :	Vesicle-trafficking protein SEC22b
Human Gene Id :	9554
Human Swiss Prot No :	O75396
Mouse Gene Id :	20333
Mouse Swiss Prot No :	O08547
Rat Gene Id :	310710
Rat Swiss Prot No :	Q4KM74
Immunogen :	Synthesized peptide derived from the Internal region of human SEC22B.
Specificity :	SEC22B Polyclonal Antibody detects endogenous levels of SEC22B protein.
Formulation :	Liquid in PBS containing 50% glycerol, 0.5% BSA and 0.02% sodium azide.
Source :	Polyclonal, Rabbit,IgG
Dilution :	WB 1:500 - 1:2000. IHC: 1:100-1:300. ELISA: 1:10000.. IF 1:50-200
Purification :	The antibody was affinity-purified from rabbit antiserum by affinity-

chromatography using epitope-specific immunogen.

Concentration : 1 mg/ml

Storage Stability : -15°C to -25°C/1 year(Do not lower than -25°C)

Observed Band : 23kD

Cell Pathway : SNARE interactions in vesicular transport;

Background : The protein encoded by this gene is a member of the SEC22 family of vesicle trafficking proteins. It seems to complex with SNARE and it is thought to play a role in the ER-Golgi protein trafficking. This protein has strong similarity to Mus musculus and Cricetulus griseus proteins.[provided by RefSeq, Sep 2009],

Function : function:SNARE involved in targeting and fusion of ER-derived transport vesicles with the Golgi complex as well as Golgi-derived retrograde transport vesicles with the ER.,PTM:Phosphorylated upon DNA damage, probably by ATM or ATR.,similarity:Belongs to the synaptobrevin family.,similarity:Contains 1 longin domain.,similarity:Contains 1 v-SNARE coiled-coil homology domain.,subcellular location:Identified by mass spectrometry in melanosome fractions from stage I to stage IV.,subunit:Component of two distinct SNARE complexes consisting of STX5, GOSR2/BOS1, BET1 and SEC22B or STX18, USE1L, BNIP1/SEC20L and SEC22B. YKT6 can probably replace SEC22B in either complex.,

Subcellular Location : Endoplasmic reticulum membrane ; Single-pass type IV membrane protein . Endoplasmic reticulum-Golgi intermediate compartment membrane . Golgi apparatus, cis-Golgi network membrane . Golgi apparatus, trans-Golgi network membrane . Melanosome . Concentrated most in the intermediate compartment/cis-Golgi network and the cis-Golgi cisternae 1 and 2. Greatly reduced in concentration at the trans end of the Golgi apparatus (By similarity). Identified by mass spectrometry in melanosome fractions from stage I to stage IV (PubMed:17081065). .

Expression : Caudate nucleus,Platelet,Skin,Umbilical cor

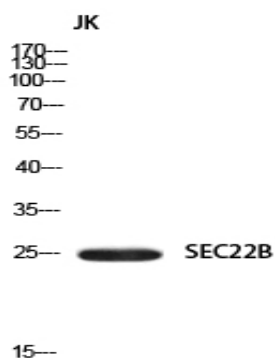
Sort : 16201

No4 : 1

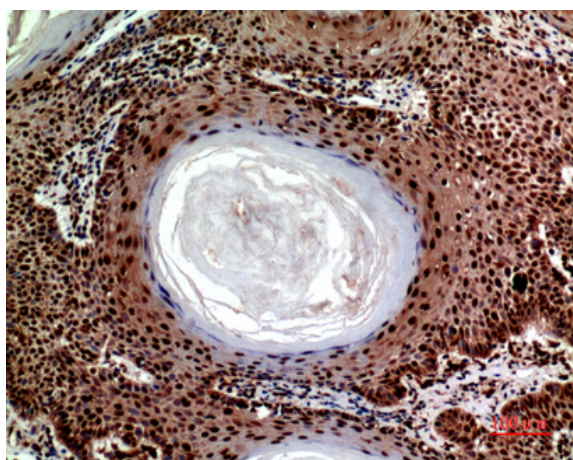
Host : Rabbit

Modifications : Unmodified

Products Images



Western blot analysis of JK using SEC22B antibody. Secondary antibody(catalog#:RS0002) was diluted at 1:20000



Immunohistochemical analysis of paraffin-embedded human-skin, antibody was diluted at 1:100