

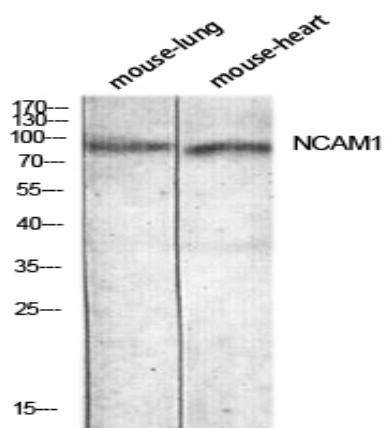
## CD56 Polyclonal Antibody

<b>Catalog No :</b>	YT5708
<b>Reactivity :</b>	Human
<b>Applications :</b>	WB;IF;ELISA
<b>Target :</b>	CD56
<b>Fields :</b>	>>Cell adhesion molecules;>>Prion disease
<b>Gene Name :</b>	NCAM1
<b>Protein Name :</b>	Neural cell adhesion molecule 1
<b>Human Gene Id :</b>	4684
<b>Human Swiss Prot No :</b>	P13591
<b>Mouse Swiss Prot No :</b>	P13595
<b>Immunogen :</b>	The antiserum was produced against synthesized peptide derived from the Internal region of human NCAM1. AA range:250-300
<b>Specificity :</b>	CD56 Polyclonal Antibody detects endogenous levels of CD56 protein.
<b>Formulation :</b>	Liquid in PBS containing 50% glycerol, 0.5% BSA and 0.02% sodium azide.
<b>Source :</b>	Polyclonal, Rabbit,IgG
<b>Dilution :</b>	WB 1:500 - 1:2000. ELISA: 1:10000.
<b>Purification :</b>	The antibody was affinity-purified from rabbit antiserum by affinity-chromatography using epitope-specific immunogen.
<b>Concentration :</b>	1 mg/ml
<b>Storage Stability :</b>	-15°C to -25°C/1 year(Do not lower than -25°C)

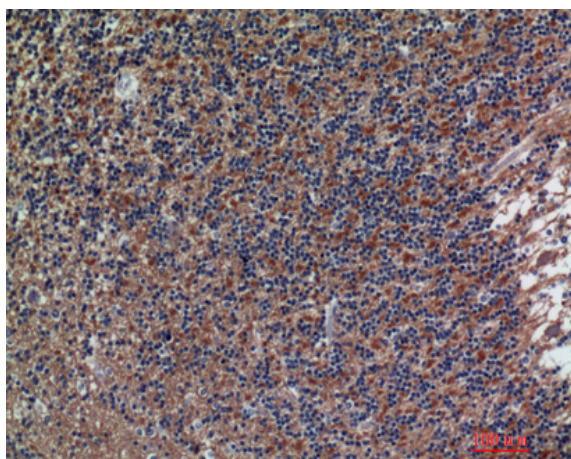
<b>Observed Band :</b>	94kD
<b>Cell Pathway :</b>	Cell adhesion molecules (CAMs);Prion diseases;
<b>Background :</b>	<p>This gene encodes a cell adhesion protein which is a member of the immunoglobulin superfamily. The encoded protein is involved in cell-to-cell interactions as well as cell-matrix interactions during development and differentiation. The encoded protein has been shown to be involved in development of the nervous system, and for cells involved in the expansion of T cells and dendritic cells which play an important role in immune surveillance. Alternative splicing results in multiple transcript variants. [provided by RefSeq, Jun 2011],</p>
<b>Function :</b>	<p>function:This protein is a cell adhesion molecule involved in neuron-neuron adhesion, neurite fasciculation, outgrowth of neurites, etc.,online information:N-CAM 140,online information:NCAM entry,similarity:Contains 2 fibronectin type-III domains.,similarity:Contains 5 Ig-like C2-type (immunoglobulin-like) domains.,</p>
<b>Subcellular Location :</b>	<p>[Isoform 1]: Cell membrane; Single-pass type I membrane protein.; [Isoform 2]: Cell membrane; Single-pass type I membrane protein.; [Isoform 3]: Cell membrane; Lipid-anchor, GPI-anchor.; [Isoform 4]: Cell membrane ; Lipid-anchor, GPI-anchor .; [Isoform 5]: Secreted.; [Isoform 6]: Secreted .</p>
<b>Expression :</b>	Brain,Brain cortex,Kidney,Ovary,Plasma,Skeletal muscle,Testis,
<b>Sort :</b>	3619
<b>No4 :</b>	1
<b>Host :</b>	Rabbit
<b>Modifications :</b>	Unmodified

---

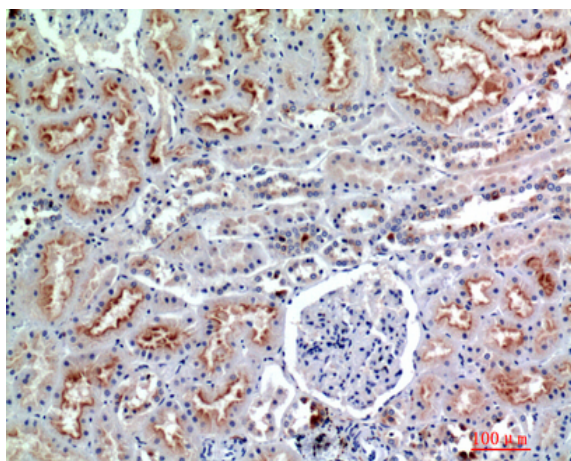
## Products Images



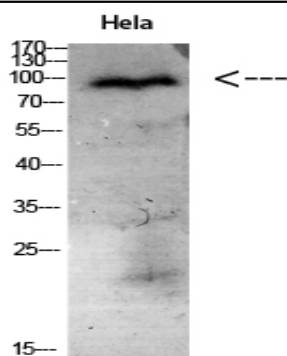
Western blot analysis of mouse-lung mouse-heart lysis using NCAM1 antibody. Antibody was diluted at 1:1000. Secondary antibody(catalog#:RS0002) was diluted at 1:20000



Immunohistochemical analysis of paraffin-embedded human-brain, antibody was diluted at 1:200



Immunohistochemical analysis of paraffin-embedded human-kidney, antibody was diluted at 1:200



Western Blot analysis of HeLa cells using Antibody diluted at 1:1000. Secondary antibody(catalog#:RS0002) was diluted at 1:20000