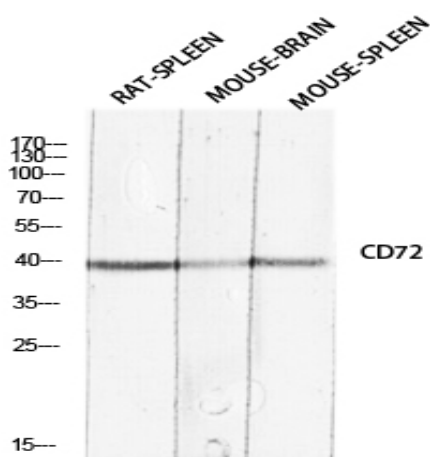


## CD72 Polyclonal Antibody

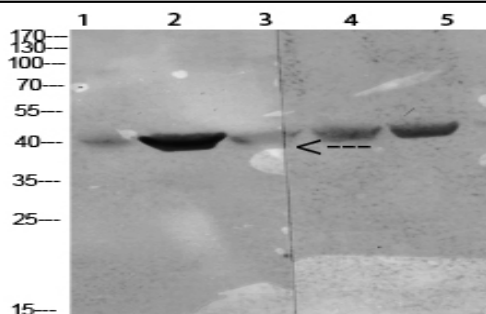
<b>Catalog No :</b>	YT5709
<b>Reactivity :</b>	Human;Mouse
<b>Applications :</b>	WB;IHC;IF;ELISA
<b>Target :</b>	CD72
<b>Fields :</b>	>>B cell receptor signaling pathway
<b>Gene Name :</b>	CD72
<b>Protein Name :</b>	B-cell differentiation antigen CD72
<b>Human Gene Id :</b>	971
<b>Human Swiss Prot No :</b>	P21854
<b>Mouse Swiss Prot No :</b>	P21855
<b>Immunogen :</b>	The antiserum was produced against synthesized peptide derived from the Internal region of human CD72. AA range:170-220
<b>Specificity :</b>	CD72 Polyclonal Antibody detects endogenous levels of CD72 protein.
<b>Formulation :</b>	Liquid in PBS containing 50% glycerol, 0.5% BSA and 0.02% sodium azide.
<b>Source :</b>	Polyclonal, Rabbit,IgG
<b>Dilution :</b>	IHC: 100-300.WB 1:500 - 1:2000. ELISA: 1:10000.. IF 1:50-200
<b>Purification :</b>	The antibody was affinity-purified from rabbit antiserum by affinity-chromatography using epitope-specific immunogen.
<b>Concentration :</b>	1 mg/ml
<b>Storage Stability :</b>	-15°C to -25°C/1 year(Do not lower than -25°C)

<b>Observed Band :</b>	40kD
<b>Cell Pathway :</b>	B_Cell_Antigen;
<b>Background :</b>	function:Plays a role in B-cell proliferation and differentiation. Associates with CD5.,online information:CD72,similarity:Contains 1 C-type lectin domain.,subunit:Homodimer; disulfide-linked.,tissue specificity:Pre-B-cells and B-cells but not terminally differentiated plasma cells.,
<b>Function :</b>	function:Plays a role in B-cell proliferation and differentiation. Associates with CD5.,online information:CD72,similarity:Contains 1 C-type lectin domain.,subunit:Homodimer; disulfide-linked.,tissue specificity:Pre-B-cells and B-cells but not terminally differentiated plasma cells.,
<b>Subcellular Location :</b>	Membrane; Single-pass type II membrane protein.
<b>Expression :</b>	Pre-B-cells and B-cells but not terminally differentiated plasma cells.
<b>Sort :</b>	3658
<b>No4 :</b>	1
<b>Host :</b>	Rabbit
<b>Modifications :</b>	Unmodified

## Products Images

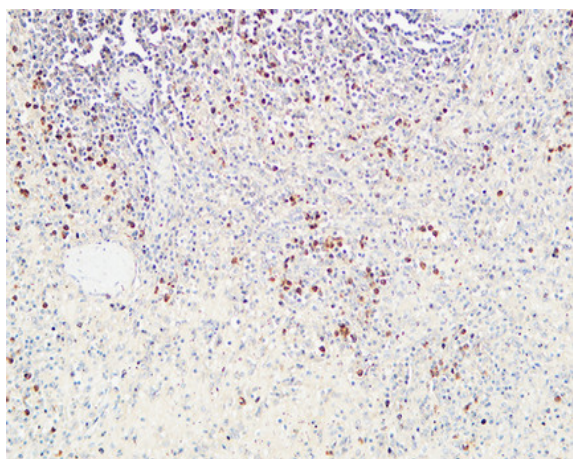


Western blot analysis of RAT-SPLEEN MOUSE-BRAIN MOUSE-SPLEEN lysis using CD72 antibody. Antibody was diluted at 1:2000. Secondary antibody(catalog#:RS0002) was diluted at 1:20000



1 **mouse-spleen**  
2 **mouse-kidney**  
3 **mouse-heart**  
4 **293T**  
5 **Hela**

Western Blot analysis of various cells using Antibody diluted at 1:1000. Secondary antibody(catalog#:RS0002) was diluted at 1:20000



Immunohistochemical analysis of paraffin-embedded Human spleen. 1, Antibody was diluted at 1:100(4° overnight). 2, High-pressure and temperature EDTA, pH8.0 was used for antigen retrieval. 3,Secondary antibody was diluted at 1:200(room temperature, 30min).