

CD306 Polyclonal Antibody

| | |
|------------------------------|---|
| Catalog No : | YT5718 |
| Reactivity : | Human |
| Applications : | WB;ELISA |
| Target : | CD306 |
| Gene Name : | LAIR2 |
| Protein Name : | Leukocyte-associated immunoglobulin-like receptor 2 |
| Human Gene Id : | 3904 |
| Human Swiss Prot No : | Q6ISS4 |
| Immunogen : | The antiserum was produced against synthesized peptide derived from the Internal region of human LAIR2. AA range:21-70 |
| Specificity : | CD306 Polyclonal Antibody detects endogenous levels of CD306 protein. |
| Formulation : | Liquid in PBS containing 50% glycerol, 0.5% BSA and 0.02% sodium azide. |
| Source : | Polyclonal, Rabbit,IgG |
| Dilution : | WB 1:500 - 1:2000. ELISA: 1:10000. Not yet tested in other applications. |
| Purification : | The antibody was affinity-purified from rabbit antiserum by affinity-chromatography using epitope-specific immunogen. |
| Concentration : | 1 mg/ml |
| Storage Stability : | -15°C to -25°C/1 year(Do not lower than -25°C) |
| Observed Band : | 20kD |
| Background : | The protein encoded by this gene is a member of the immunoglobulin superfamily. It was identified by its similarity to leukocyte-associated |

immunoglobulin-like receptor 1, a membrane-bound receptor that modulates innate immune response. The protein encoded by this locus is a soluble receptor that may play roles in both inhibition of collagen-induced platelet aggregation and vessel formation during placental implantation. This gene maps to a region of 19q13.4, termed the leukocyte receptor cluster, which contains 29 genes in the immunoglobulin superfamily. Alternatively spliced transcript variants have been described for this gene. [provided by RefSeq, Sep 2013],

Function : alternative products:Named isoforms=2,similarity:Contains 1 Ig-like C2-type (immunoglobulin-like) domain.,

Subcellular Location : Secreted.

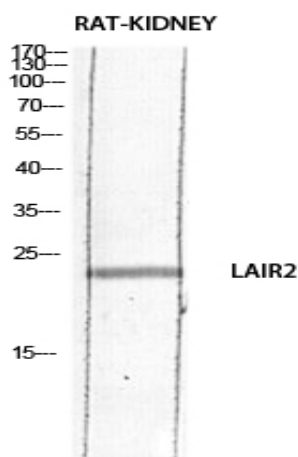
Sort : 3525

No4 : 1

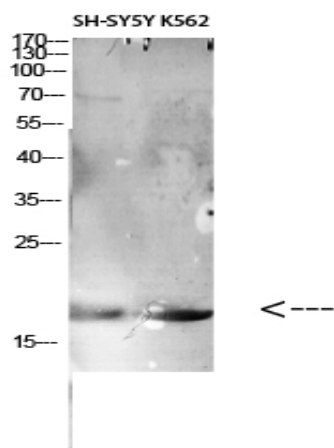
Host : Rabbit

Modifications : Unmodified

Products Images



Western blot analysis of RAT-KIDNEY lysis using LAIR2 antibody. Antibody was diluted at 1:1000. Secondary antibody(catalog#:RS0002) was diluted at 1:20000



Western Blot analysis of various cells using Antibody diluted at 1:1000. Secondary antibody(catalog#:RS0002) was diluted at 1:20000