

IL-1F5 Polyclonal Antibody

Catalog No :	YT5720
Reactivity :	Human;Mouse;Rat
Applications :	WB;ELISA
Target :	IL-1F5
Fields :	>>Cytokine-cytokine receptor interaction
Gene Name :	IL36RN
Protein Name :	Interleukin-36 receptor antagonist protein
Human Gene Id :	26525
Human Swiss Prot No :	Q9UBH0
Mouse Gene Id :	54450
Mouse Swiss Prot No :	Q9QYY1
Immunogen :	The antiserum was produced against synthesized peptide derived from the Internal region of human IL36RN. AA range:1-50
Specificity :	IL-1F5 Polyclonal Antibody detects endogenous levels of IL-1F5 protein.
Formulation :	Liquid in PBS containing 50% glycerol, 0.5% BSA and 0.02% sodium azide.
Source :	Polyclonal, Rabbit,IgG
Dilution :	WB 1:500 - 1:2000. ELISA: 1:10000. Not yet tested in other applications.
Purification :	The antibody was affinity-purified from rabbit antiserum by affinity-chromatography using epitope-specific immunogen.
Concentration :	1 mg/ml

Storage Stability : -15°C to -25°C/1 year(Do not lower than -25°C)

Observed Band : 17kD

Background : The protein encoded by this gene is a member of the interleukin 1 cytokine family. This cytokine was shown to specifically inhibit the activation of NF-kappaB induced by interleukin 1 family, member 6 (IL1F6). This gene and eight other interleukin 1 family genes form a cytokine gene cluster on chromosome 2. Two alternatively spliced transcript variants encoding the same protein have been reported. [provided by RefSeq, Jul 2008],

Function : function:Is a highly and a specific antagonist of the IL-1 receptor-related protein 2-mediated response to interleukin 1 family member 9 (IL1F9). Could constitute part of an independent signaling system analogous to interleukin-1 alpha (IL-1A), beta (IL-1B) receptor agonist and interleukin-1 receptor type I (IL-1R1), that is present in epithelial barriers and takes part in local inflammatory response.,induction:By phorbol ester (PMA) and lipopolysaccharide (LPS) treatment in macrophage cell line.,online information:Interleukin-1 entry,similarity:Belongs to the IL-1 family.,tissue specificity:Predominantly expressed in keratinocytes but not in fibroblasts, endothelial cells or melanocytes. Detected also in the spleen, brain leukocyte and macrophage cell types. Increased in lesional psoriasis skin.,

Subcellular Location : Cytoplasm . Secreted . The secretion is dependent on protein unfolding and facilitated by the cargo receptor TMED10; it results in protein translocation from the cytoplasm into the ERGIC (endoplasmic reticulum-Golgi intermediate compartment) followed by vesicle entry and secretion. .

Expression : Predominantly expressed in skin keratinocytes but not in fibroblasts, endothelial cells or melanocytes. Detected also in the spleen, brain leukocyte and macrophage cell types. Increased in lesional psoriasis skin.

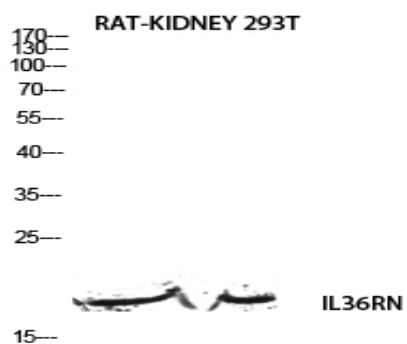
Sort : 8466

No4 : 1

Host : Rabbit

Modifications : Unmodified

Products Images



Western blot analysis of RAT-KIDNEY 293T lysis using IL36RN antibody. Antibody was diluted at 1:500. Secondary antibody(catalog#:RS0002) was diluted at 1:20000