

## Cripto-3 Polyclonal Antibody

<b>Catalog No :</b>	YT5721
<b>Reactivity :</b>	Human
<b>Applications :</b>	WB;ELISA
<b>Target :</b>	Cripto-3
<b>Gene Name :</b>	TDGF1P3
<b>Protein Name :</b>	Putative teratocarcinoma-derived growth factor 3
<b>Human Swiss Prot No :</b>	P51864
<b>Immunogen :</b>	The antiserum was produced against synthesized peptide derived from the Internal region of human TDGF1P3. AA range:1-50
<b>Specificity :</b>	Cripto-3 Polyclonal Antibody detects endogenous levels of Cripto-3 protein.
<b>Formulation :</b>	Liquid in PBS containing 50% glycerol, 0.5% BSA and 0.02% sodium azide.
<b>Source :</b>	Polyclonal, Rabbit,IgG
<b>Dilution :</b>	WB 1:500 - 1:2000. ELISA: 1:10000. Not yet tested in other applications.
<b>Purification :</b>	The antibody was affinity-purified from rabbit antiserum by affinity-chromatography using epitope-specific immunogen.
<b>Concentration :</b>	1 mg/ml
<b>Storage Stability :</b>	-15°C to -25°C/1 year(Do not lower than -25°C)
<b>Observed Band :</b>	21kD
<b>Background :</b>	The TDGF3 locus has characteristics of a retrotransposon, including lack of introns and a poly(A) sequence. [provided by RefSeq, Jul 2008],
<b>Function :</b>	function:Could play a role in the determination of the epiblastic cells that

subsequently give rise to the mesoderm.,similarity:Contains 1 EGF-like domain.,tissue specificity:Preferentially expressed in gastric and colorectal carcinomas than in their normal counterparts.,

**Subcellular Location :**

Cell membrane .

**Expression :**

Expressed weakly in lung, colon and breast. Expressed also strongly in primary cancer tissues; lung and colon cancers.

**Sort :**

4569

**No4 :**

1

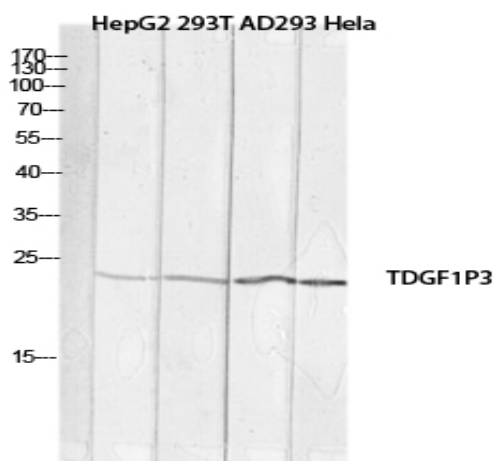
**Host :**

Rabbit

**Modifications :**

Unmodified

## Products Images



Western blot analysis of HepG2 293T AD293 HeLa lysates using TDGF1P3 antibody. Antibody was diluted at 1:1000. Secondary antibody(catalog#:RS0002) was diluted at 1:20000