

## IL-22 Polyclonal Antibody

|                              |  |
|------------------------------|--|
| <b>Catalog No :</b>          | YT5722   |
| <b>Reactivity :</b>          | Human;Mouse;Rat  |
| <b>Applications :</b>        | WB;ELISA   |
| <b>Target :</b>              | IL-22  |
| <b>Fields :</b>              | >>Cytokine-cytokine receptor interaction;>>JAK-STAT signaling pathway;>>Th17 cell differentiation;>>Inflammatory bowel disease |
| <b>Gene Name :</b>           | IL22   |
| <b>Protein Name :</b>        | Interleukin-22   |
| <b>Human Gene Id :</b>       | 50616  |
| <b>Human Swiss Prot No :</b> | Q9GZX6   |
| <b>Mouse Gene Id :</b>       | 50929  |
| <b>Mouse Swiss Prot No :</b> | Q9JJY9   |
| <b>Immunogen :</b>           | The antiserum was produced against synthesized peptide derived from the C-terminal region of human IL22. AA range:121-170      |
| <b>Specificity :</b>         | IL-22 Polyclonal Antibody detects endogenous levels of IL-22 protein.  |
| <b>Formulation :</b>         | Liquid in PBS containing 50% glycerol, 0.5% BSA and 0.02% sodium azide.  |
| <b>Source :</b>              | Polyclonal, Rabbit,IgG   |
| <b>Dilution :</b>            | WB 1:500 - 1:2000. ELISA: 1:10000. Not yet tested in other applications.   |
| <b>Purification :</b>        | The antibody was affinity-purified from rabbit antiserum by affinity-chromatography using epitope-specific immunogen.          |
| <b>Concentration :</b>       | 1 mg/ml  |

**Storage Stability :** -15°C to -25°C/1 year(Do not lower than -25°C)

**Observed Band :** 22kD

**Cell Pathway :** Cytokine-cytokine receptor interaction;Jak\_STAT;

**Background :** function:Cytokine that contributes to the inflammatory response in vivo.,similarity:Belongs to the IL-10 family.,

**Function :** function:Cytokine that contributes to the inflammatory response in vivo.,similarity:Belongs to the IL-10 family.,

**Subcellular Location :** Secreted.

**Expression :** Blood,PCR rescued clones,

**Tag :** hot

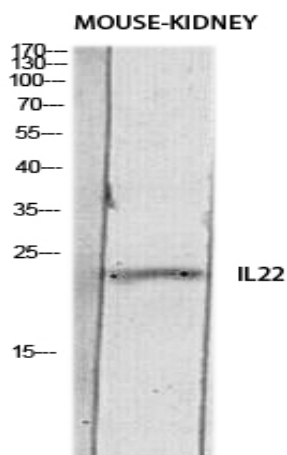
**Sort :** 8481

**No4 :** 1

**Host :** Rabbit

**Modifications :** Unmodified

## Products Images



Western blot analysis of MOUSE-KIDNEY lysis using IL22 antibody. Antibody was diluted at 1:500. Secondary antibody(catalog#:RS0002) was diluted at 1:20000