

IL-1F10 Polyclonal Antibody

Catalog No :	YT5725
Reactivity :	Human;Mouse
Applications :	WB;IHC;IF;ELISA
Target :	IL-1F10
Fields :	>>Cytokine-cytokine receptor interaction
Gene Name :	IL1F10
Protein Name :	Interleukin-1 family member 10
Human Gene Id :	84639
Human Swiss Prot No :	Q8WWZ1
Mouse Gene Id :	215274
Mouse Swiss Prot No :	Q8R459
Immunogen :	Synthesized peptide derived from Interleukin-1 family member 10 at AA range: 101-150
Specificity :	IL-1F10 Polyclonal Antibody detects endogenous levels of IL-1F10 protein.
Formulation :	Liquid in PBS containing 50% glycerol, 0.5% BSA and 0.02% sodium azide.
Source :	Polyclonal, Rabbit,IgG
Dilution :	WB 1:500 - 1:2000. IHC: 1:100-1:300. ELISA: 1:10000.. IF 1:50-200
Purification :	The antibody was affinity-purified from rabbit antiserum by affinity-chromatography using epitope-specific immunogen.
Concentration :	1 mg/ml

Storage Stability : -15°C to -25°C/1 year(Do not lower than -25°C)

Observed Band : 17kD

Background : The protein encoded by this gene is a member of the interleukin 1 cytokine family. This gene and eight other interleukin 1 family genes form a cytokine gene cluster on chromosome 2. This cytokine is thought to participate in a network of interleukin 1 family members to regulate adapted and innate immune responses. Two alternatively spliced transcript variants encoding the same protein have been reported. [provided by RefSeq, Jul 2008],

Function : function: Binds soluble IL-1 receptor type 1.,online information: Interleukin-1 entry,similarity: Belongs to the IL-1 family.,tissue specificity: Expressed in fetal skin, spleen and tonsil. Expressed mostly in the basal epithelia of skin and in proliferating B-cells of the tonsil.,

Subcellular Location : Cytoplasm . Secreted . The secretion is dependent on protein unfolding and facilitated by the cargo receptor TMED10; it results in protein translocation from the cytoplasm into the ERGIC (endoplasmic reticulum-Golgi intermediate compartment) followed by vesicle entry and secretion. .

Expression : Expressed in fetal skin, spleen and tonsil. Expressed mostly in the basal epithelia of skin and in proliferating B-cells of the tonsil.

Tag : hot

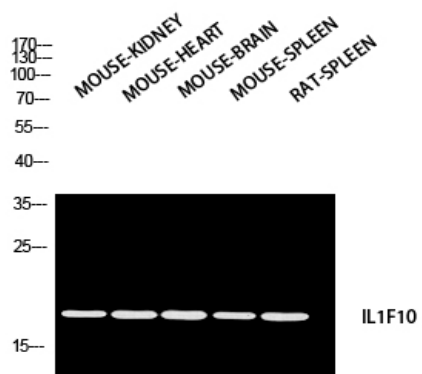
Sort : 8465

No4 : 1

Host : Rabbit

Modifications : Unmodified

Products Images



Western blot analysis of MOUSE-KIDNEY MOUSE-HEART
MOUSE-BRAIN MOUSE-SPLEEN RAT-SPLEEN using IL1F10
antibody. Antibody was diluted at 1:2000. Secondary
antibody(catalog#:RS0002) was diluted at 1:20000