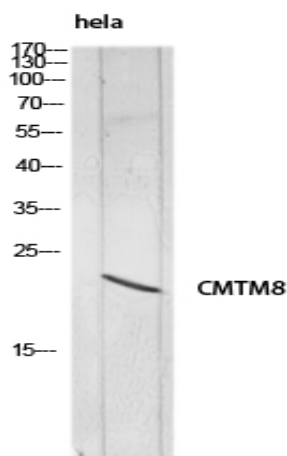


CMTM8 Polyclonal Antibody

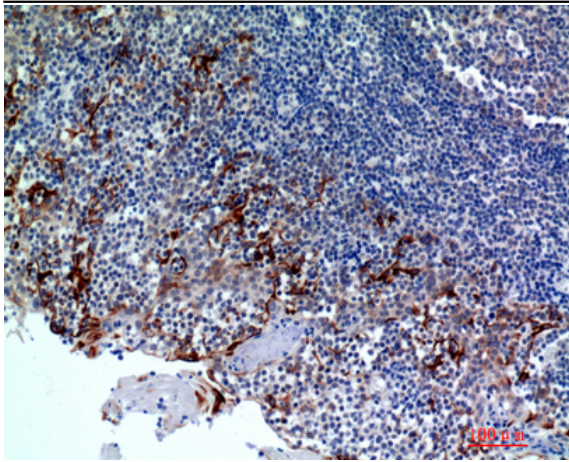
Catalog No :	YT5728
Reactivity :	Human;Mouse
Applications :	WB;IHC;IF;ELISA
Target :	CMTM8
Gene Name :	CMTM8
Protein Name :	CKLF-like MARVEL transmembrane domain-containing protein 8
Human Gene Id :	152189
Human Swiss Prot No :	Q8IZV2
Mouse Gene Id :	70031
Mouse Swiss Prot No :	Q9CZR4
Immunogen :	The antiserum was produced against synthesized peptide derived from the Internal region of human CMTM8. AA range:101-150
Specificity :	CMTM8 Polyclonal Antibody detects endogenous levels of CMTM8 protein.
Formulation :	Liquid in PBS containing 50% glycerol, 0.5% BSA and 0.02% sodium azide.
Source :	Polyclonal, Rabbit,IgG
Dilution :	WB 1:500 - 1:2000. IHC: 1:100-1:300. ELISA: 1:10000.. IF 1:50-200
Purification :	The antibody was affinity-purified from rabbit antiserum by affinity-chromatography using epitope-specific immunogen.
Concentration :	1 mg/ml
Storage Stability :	-15°C to -25°C/1 year(Do not lower than -25°C)

Observed Band : 20kD**Background :** This gene belongs to the chemokine-like factor gene superfamily, a novel family that is similar to the chemokine and the transmembrane 4 superfamilies. This gene is one of several chemokine-like factor genes located in a cluster on chromosome 3. This gene acts as a tumor suppressor, and plays a role in regulating the migration of tumor cells. The encoded protein is thought to function as a negative regulator of epidermal growth factor-induced signaling. Alternative splicing results in multiple transcript variants encoding different isoforms. [provided by RefSeq, Feb 2016],**Function :** similarity:Belongs to the chemokine-like factor family.,similarity:Contains 1 MARVEL domain.,tissue specificity:Highly expressed in liver and pancreas.,**Subcellular Location :** [Isoform 1]: Membrane; Multi-pass membrane protein.; [Isoform 2]: Cytoplasm. Nucleus.**Expression :** Highly expressed in liver and pancreas.**Sort :** 4309**No4 :** 1**Host :** Rabbit**Modifications :** Unmodified

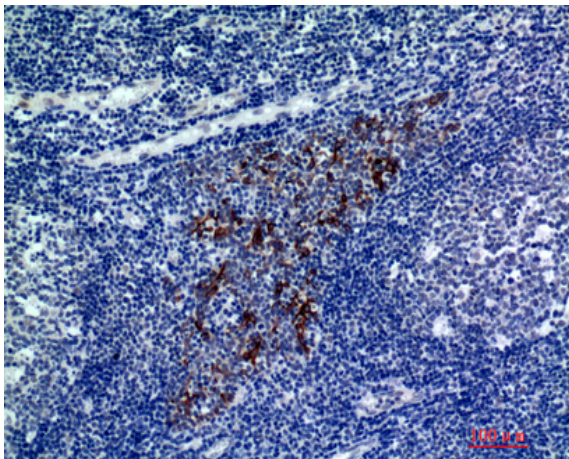
Products Images



Western blot analysis of hela lysis using CMTM8 antibody.
Secondary antibody(catalog#:RS0002) was diluted at 1:20000



Immunohistochemical analysis of paraffin-embedded human-tonsils, antibody was diluted at 1:200



Immunohistochemical analysis of paraffin-embedded human-tonsils, antibody was diluted at 1:200