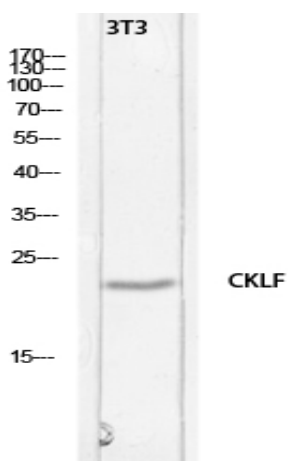


## C32 Polyclonal Antibody

<b>Catalog No :</b>	YT5730
<b>Reactivity :</b>	Human;Rat;Mouse;
<b>Applications :</b>	WB;ELISA
<b>Target :</b>	C32
<b>Gene Name :</b>	CKLF
<b>Protein Name :</b>	Chemokine-like factor
<b>Human Gene Id :</b>	51192
<b>Human Swiss Prot No :</b>	Q9UBR5
<b>Mouse Gene Id :</b>	75458
<b>Mouse Swiss Prot No :</b>	Q9DAS1
<b>Rat Gene Id :</b>	245978
<b>Rat Swiss Prot No :</b>	Q9JK79
<b>Immunogen :</b>	Synthesized peptide derived from Chemokine-like factor at AA range: 103-152
<b>Specificity :</b>	C32 Polyclonal Antibody detects endogenous levels of C32 protein.
<b>Formulation :</b>	Liquid in PBS containing 50% glycerol, 0.5% BSA and 0.02% sodium azide.
<b>Source :</b>	Polyclonal, Rabbit,IgG
<b>Dilution :</b>	WB 1:500 - 1:2000. ELISA: 1:10000. Not yet tested in other applications.
<b>Purification :</b>	The antibody was affinity-purified from rabbit antiserum by affinity-chromatography using epitope-specific immunogen.

<b>Concentration :</b>	1 mg/ml
<b>Storage Stability :</b>	-15°C to -25°C/1 year(Do not lower than -25°C)
<b>Observed Band :</b>	20kD
<b>Background :</b>	<p>The product of this gene is a cytokine. Cytokines are small proteins that have an essential role in the immune and inflammatory responses. This gene is one of several chemokine-like factor genes located in a cluster on chromosome 16. The protein encoded by this gene is a potent chemoattractant for neutrophils, monocytes and lymphocytes. It also can stimulate the proliferation of skeletal muscle cells. This protein may play important roles in inflammation and in the regeneration of skeletal muscle. Alternatively spliced transcript variants encoding different isoforms have been identified. Naturally occurring read-through transcription occurs between this locus and the neighboring locus CMTM1 (CKLF-like MARVEL transmembrane domain containing 1).[provided by RefSeq, Feb 2011],</p>
<b>Function :</b>	<p>function:Isoform CKLF1 has chemotactic response in rat monocytes, neutrophils, and lymphocytes.,function:May play an important role in inflammation and regeneration of skeletal muscle. Partly inhibited by interleukin 10.,similarity:Belongs to the chemokine-like factor family.,similarity:Contains 1 MARVEL domain.,tissue specificity:All 4 isoforms have highest expression levels in adult spleen, lungs, testis, ovary, peripheral blood leucocyte, placenta, pancreas, and in fetal brain, skeletal muscle, thymus and heart. Lower expression levels in adult skeletal muscle, liver, thymus colon, prostate, and fetal spleen and liver.,</p>
<b>Subcellular Location :</b>	[Isoform 1]: Secreted .; [Isoform 2]: Membrane ; Multi-pass membrane protein .; [Isoform 4]: Membrane ; Multi-pass membrane protein .
<b>Expression :</b>	Isoform 1, isoform 2, isoform 3 and isoform 4 have highest expression levels in adult spleen, lung, testis, ovary, peripheral blood leukocyte, placenta, pancreas, and in fetal brain, skeletal muscle, thymus and heart. Lower expression levels in adult skeletal muscle, liver, thymus colon, prostate and fetal spleen and liver.
<b>Sort :</b>	2945
<b>No4 :</b>	1
<b>Host :</b>	Rabbit
<b>Modifications :</b>	Unmodified

## Products Images



Western blot analysis of 3T3 lysis using CKLF antibody.  
Secondary antibody(catalog#:RS0002) was diluted at 1:20000