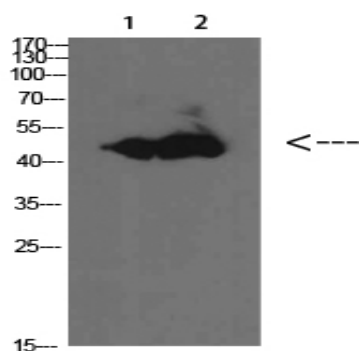


BMP-10 Polyclonal Antibody

Catalog No :	YT5750
Reactivity :	Human;Mouse;Rat
Applications :	WB;ELISA
Target :	BMP-10
Fields :	>>Cytokine-cytokine receptor interaction
Gene Name :	BMP10
Protein Name :	BMP-10
Human Gene Id :	27302
Human Swiss Prot No :	O95393
Mouse Gene Id :	12154
Mouse Swiss Prot No :	Q9R229
Rat Swiss Prot No :	Q4AEG6
Immunogen :	Synthesized peptide derived from BMP-10 at AA range: 361-410
Specificity :	BMP-10 Polyclonal Antibody detects endogenous levels of BMP-10
Formulation :	Liquid in PBS containing 50% glycerol, 0.5% BSA and 0.02% sodium azide.
Source :	Polyclonal, Rabbit,IgG
Dilution :	WB 1:500-2000, ELISA 1:10000-20000
Purification :	The antibody was affinity-purified from rabbit antiserum by affinity-chromatography using epitope-specific immunogen.

Concentration :	1 mg/ml
Storage Stability :	-15°C to -25°C/1 year(Do not lower than -25°C)
Observed Band :	48kD
Background :	<p>This gene encodes a secreted ligand of the TGF-beta (transforming growth factor-beta) superfamily of proteins. Ligands of this family bind various TGF-beta receptors leading to recruitment and activation of SMAD family transcription factors that regulate gene expression. The encoded preproprotein is proteolytically processed to generate the mature protein, which binds to the activin receptor-like kinase 1 (ALK1) and plays important roles in cardiovascular development including cardiomyocyte proliferation and regulation of heart size, closure of the ductus arteriosus, angiogenesis and ventricular trabeculation. [provided by RefSeq, Aug 2016],</p>
Function :	<p>function:Required for maintaining the proliferative activity of embryonic cardiomyocytes by preventing premature activation of the negative cell cycle regulator CDKN1C/p57KIP and maintaining the required expression levels of cardiogenic factors such as MEF2C and NKX2-5. Acts as a ligand for ACVRL1/ALK1, BMPR1A/ALK3 and BMPR1B/ALK6, leading to activation of SMAD1, SMAD5 and SMAD8 transcription factors. Inhibits endothelial cell migration and growth.,online information:Bone morphogenetic protein 10 entry,similarity:Belongs to the TGF-beta family.,subunit:Homodimer; disulfide-linked.,</p>
Subcellular Location :	Secreted .
Expression :	Detected in mammary epithelia (at protein level).
Sort :	2792
No4 :	1
Host :	Rabbit
Modifications :	Unmodified

Products Images



1	mouse-lung
2	mouse-brain

Western Blot analysis of mouse-brain mouse-lung cells using BMP-10 Polyclonal Antibody diluted at 1:1000. Secondary antibody(catalog#:RS0002) was diluted at 1:20000