

## GABA T-1 Polyclonal Antibody

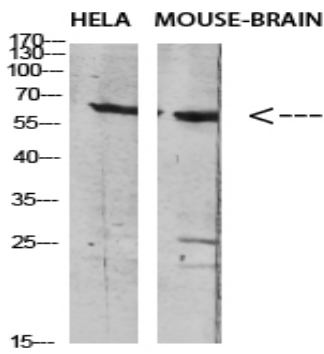
<b>Catalog No :</b>	YT5844
<b>Reactivity :</b>	Human;Mouse;Rat
<b>Applications :</b>	WB;IHC;IF;ELISA
<b>Target :</b>	GABA T-1
<b>Fields :</b>	>>Synaptic vesicle cycle;>>GABAergic synapse
<b>Gene Name :</b>	SLC6A1 GABATR GABT1 GAT1
<b>Protein Name :</b>	Sodium- and chloride-dependent GABA transporter 1 (GAT-1) (Solute carrier family 6 member 1)
<b>Human Gene Id :</b>	6529
<b>Human Swiss Prot No :</b>	P30531
<b>Mouse Gene Id :</b>	232333
<b>Mouse Swiss Prot No :</b>	P31648
<b>Rat Swiss Prot No :</b>	P23978
<b>Immunogen :</b>	The antiserum was produced against synthesized peptide derived from the Internal region of human SLC6A1. AA range:170-220
<b>Specificity :</b>	The antibody detects endogenous GABA T-1
<b>Formulation :</b>	Liquid in PBS containing 50% glycerol, 0.5% BSA and 0.02% sodium azide.
<b>Source :</b>	Polyclonal, Rabbit,IgG
<b>Dilution :</b>	WB 1:500-2000,IHC 1:500-200, ELISA 1:10000-20000. IF 1:50-200
<b>Purification :</b>	The antibody was affinity-purified from rabbit antiserum by affinity-chromatography using epitope-specific immunogen.

---

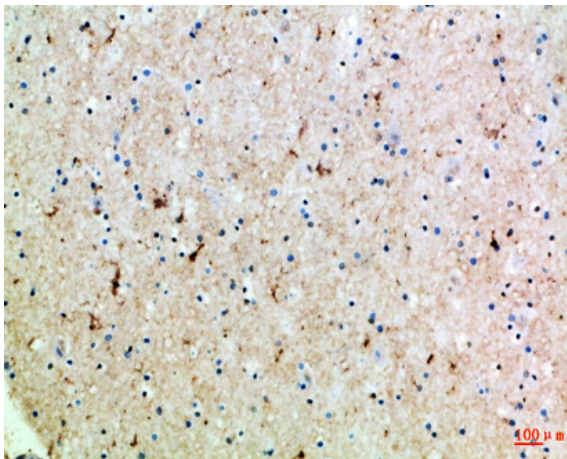
<b>Concentration :</b>	1 mg/ml
<b>Storage Stability :</b>	-15°C to -25°C/1 year(Do not lower than -25°C)
<b>Observed Band :</b>	50kD
<b>Background :</b>	The SLC6A1 gene encodes a gamma-aminobutyric acid (GABA) transporter, which removes GABA from the synaptic cleft (Hirunsatit et al., 2009 [PubMed 19077666]).[supplied by OMIM, Jul 2009],
<b>Function :</b>	domain:The PDZ domain-binding motif is involved in the interaction with MPP5.,function:Terminates the action of GABA by its high affinity sodium-dependent reuptake into presynaptic terminals.,miscellaneous:This protein is the target of psychomotor stimulants such as amphetamines or cocaine.,similarity:Belongs to the sodium:neurotransmitter symporter (SNF) family.,subcellular location:Localized at the plasma membrane and in a subset of intracellular vesicles. Localized at the presynaptic terminals of interneurons.,subunit:Interacts with MPP5.,
<b>Subcellular Location :</b>	Cell membrane; Multi-pass membrane protein. Membrane; Multi-pass membrane protein. Cell junction, synapse, presynapse . Localized at the plasma membrane and in a subset of intracellular vesicles. Localized at the presynaptic terminals of interneurons (By similarity) .
<b>Expression :</b>	Brain,
<b>Tag :</b>	hot
<b>Sort :</b>	6368
<b>No4 :</b>	1
<b>Host :</b>	Rabbit
<b>Modifications :</b>	Unmodified

---

## Products Images



Western blot analysis of HELA MOUSE-BRAIN Cell Lysate using antibody. Secondary antibody(catalog#:RS0002) was diluted at 1:20000



Immunohistochemical analysis of paraffin-embedded Human-brain, antibody was diluted at 1:100