

Thrombospondin 4 Polyclonal Antibody

Catalog No :	YT5958
Reactivity :	Human;Rat;Mouse;
Applications :	IHC;IF;ELISA
Target :	Thrombospondin 4
Fields :	>>Phagosome;>>PI3K-Akt signaling pathway;>>Focal adhesion;>>ECM-receptor interaction;>>Malaria;>>Human papillomavirus infection
Gene Name :	THBS4 TSP4
Protein Name :	Thrombospondin-4
Human Gene Id :	7060
Human Swiss Prot No :	P35443
Mouse Gene Id :	21828
Mouse Swiss Prot No :	Q9Z1T2
Immunogen :	Synthetic peptide from human protein at AA range: 551-600
Specificity :	The antibody detects endogenous Thrombospondin 4
Formulation :	Liquid in PBS containing 50% glycerol, 0.5% BSA and 0.02% sodium azide.
Source :	Polyclonal, Rabbit,IgG
Dilution :	IHC 1:50-200, ELISA 1:10000-20000. IF 1:50-200
Purification :	The antibody was affinity-purified from rabbit antiserum by affinity-chromatography using epitope-specific immunogen.
Concentration :	1 mg/ml

Storage Stability : -15°C to -25°C/1 year(Do not lower than -25°C)

Cell Pathway : TGF-beta;Focal adhesion;ECM-receptor interaction;

Background : thrombospondin 4(THBS4) Homo sapiens The protein encoded by this gene belongs to the thrombospondin protein family. Thrombospondin family members are adhesive glycoproteins that mediate cell-to-cell and cell-to-matrix interactions. This protein forms a pentamer and can bind to heparin and calcium. It is involved in local signaling in the developing and adult nervous system, and it contributes to spinal sensitization and neuropathic pain states. This gene is activated during the stromal response to invasive breast cancer. It may also play a role in inflammatory responses in Alzheimer's disease. Alternative splicing results in multiple transcript variants. [provided by RefSeq, Apr 2015],

Function : function:Adhesive glycoprotein that mediates cell-to-cell and cell-to-matrix interactions. Can bind to fibrinogen, fibronectin, laminin and type V collagen.,similarity:Belongs to the thrombospondin family.,similarity:Contains 1 TSP C-terminal (TSPC) domain.,similarity:Contains 1 TSP N-terminal (TSPN) domain.,similarity:Contains 4 EGF-like domains.,similarity:Contains 8 TSP type-3 repeats.,subunit:Homopentamer; disulfide-linked.,

Subcellular Location : Endoplasmic reticulum . Sarcoplasmic reticulum . Secreted . Secreted, extracellular space . Secreted, extracellular space, extracellular matrix .

Expression : Heart,PNS,Synovium,

Tag : hot

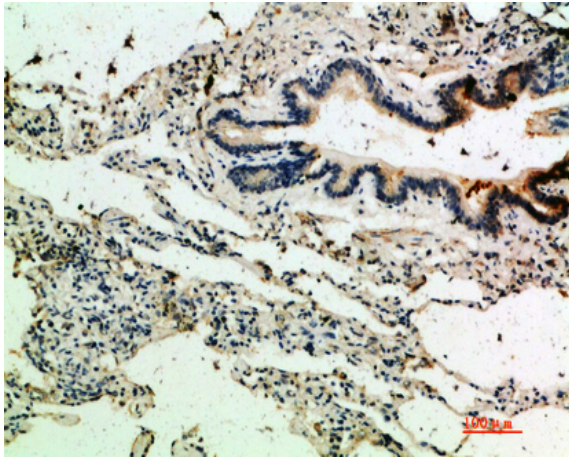
Sort : 1239

No4 : 1

Host : Rabbit

Modifications : Unmodified

Products Images



Immunohistochemical analysis of paraffin-embedded human-lung, antibody was diluted at 1:200