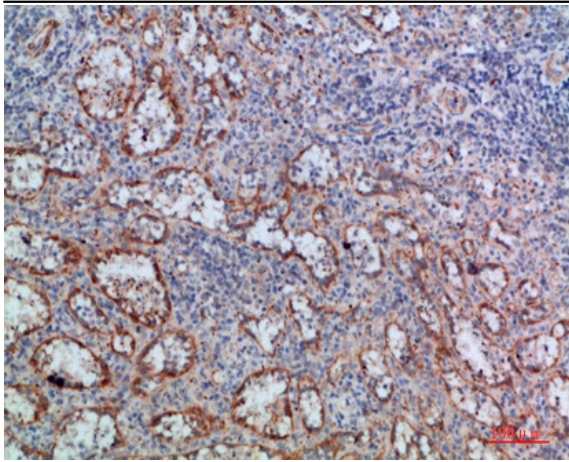


LT- β Polyclonal Antibody

Catalog No :	YT5971
Reactivity :	Human;Mouse
Applications :	WB;IHC;IF;ELISA
Target :	LT- β
Fields :	>>Cytokine-cytokine receptor interaction;>>NF-kappa B signaling pathway;>>Rheumatoid arthritis
Gene Name :	LTB TNFC TNFSF3
Protein Name :	Lymphotoxin-beta (LT-beta) (Tumor necrosis factor C) (TNF-C) (Tumor necrosis factor ligand superfamily member 3)
Human Gene Id :	4050
Human Swiss Prot No :	Q06643
Mouse Gene Id :	16994
Mouse Swiss Prot No :	P41155
Immunogen :	Synthetic peptide from human protein at AA range: 41-90
Specificity :	The antibody detects endogenous LT- β
Formulation :	Liquid in PBS containing 50% glycerol, 0.5% BSA and 0.02% sodium azide.
Source :	Polyclonal, Rabbit,IgG
Dilution :	IHC 1:50-200, ELISA 1:10000-20000, WB 1:500-2000. IF 1:50-200
Purification :	The antibody was affinity-purified from rabbit antiserum by affinity-chromatography using epitope-specific immunogen.
Concentration :	1 mg/ml

Storage Stability :	<u>-15°C to -25°C/1 year(Do not lower than -25°C)</u>
Molecularweight :	<u>25kD</u>
Cell Pathway :	<u>Cytokine-cytokine receptor interaction;</u>
Background :	<u>Lymphotoxin beta is a type II membrane protein of the TNF family. It anchors lymphotoxin-alpha to the cell surface through heterotrimer formation. The predominant form on the lymphocyte surface is the lymphotoxin-alpha 1/beta 2 complex (e.g. 1 molecule alpha/2 molecules beta) and this complex is the primary ligand for the lymphotoxin-beta receptor. The minor complex is lymphotoxin-alpha 2/beta 1. LTB is an inducer of the inflammatory response system and involved in normal development of lymphoid tissue. Lymphotoxin-beta isoform b is unable to complex with lymphotoxin-alpha suggesting a function for lymphotoxin-beta which is independent of lymphotoxin-alpha. Alternative splicing results in multiple transcript variants encoding different isoforms. [provided by RefSeq, Jul 2008],</u>
Function :	<u>function:Cytokine that binds to LTBR/TNFRSF3. May play a specific role in immune response regulation. Provides the membrane anchor for the attachment of the heterotrimeric complex to the cell surface. Isoform 2 is probably non-functional.,similarity:Belongs to the tumor necrosis factor family.,subunit:Heterotrimer of either two LTB and one LTA subunits or (less prevalent) one LTB and two LTA subunits.,tissue specificity:Spleen and thymus.,</u>
Subcellular Location :	<u>Membrane ; Single-pass type II membrane protein .</u>
Expression :	<u>Spleen and thymus.</u>
Tag :	<u>orthogonal</u>
Sort :	<u>9284</u>
No4 :	<u>1</u>
Host :	<u>Rabbit</u>
Modifications :	<u>Unmodified</u>

Products Images



Immunohistochemical analysis of paraffin-embedded human-spleen, antibody was diluted at 1:200