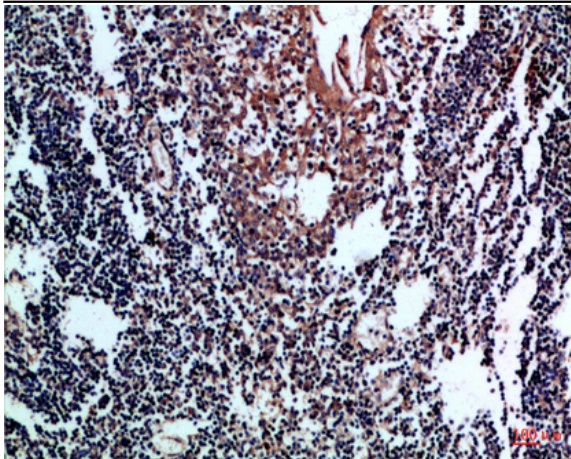


## CD80 Polyclonal Antibody

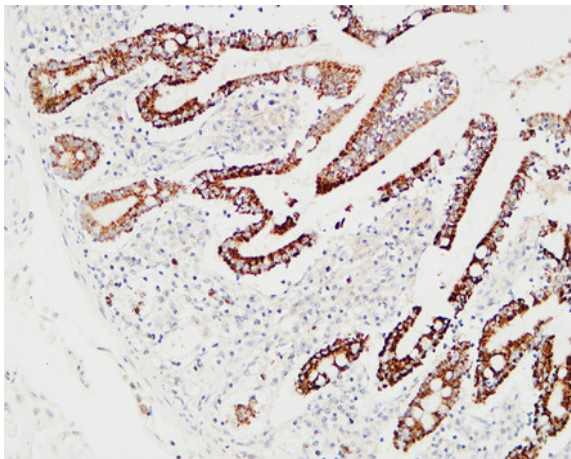
<b>Catalog No :</b>	YT6014
<b>Reactivity :</b>	Human;Mouse
<b>Applications :</b>	IHC;IF;ELISA
<b>Target :</b>	CD80
<b>Fields :</b>	>>Cell adhesion molecules;>>Toll-like receptor signaling pathway;>>Intestinal immune network for IgA production;>>Type I diabetes mellitus;>>Autoimmune thyroid disease;>>Systemic lupus erythematosus;>>Rheumatoid arthritis;>>Allograft rejection;>>Graft-versus-host disease;>>Viral myocarditis
<b>Gene Name :</b>	CD80 CD28LG CD28LG1 LAB7
<b>Protein Name :</b>	T-lymphocyte activation antigen CD80 (Activation B7-1 antigen) (BB1) (CTLA-4 counter-receptor B7.1) (B7) (CD antigen CD80)
<b>Human Gene Id :</b>	941
<b>Human Swiss Prot No :</b>	P33681
<b>Mouse Gene Id :</b>	12519
<b>Mouse Swiss Prot No :</b>	Q00609
<b>Immunogen :</b>	Synthetic peptide from human protein at AA range: 100-160
<b>Specificity :</b>	The antibody detects endogenous CD80
<b>Formulation :</b>	Liquid in PBS containing 50% glycerol, 0.5% BSA and 0.02% sodium azide.
<b>Source :</b>	Polyclonal, Rabbit,IgG
<b>Dilution :</b>	IHC 1:50-200, ELISA 1:10000-20000. IF 1:50-200
<b>Purification :</b>	The antibody was affinity-purified from rabbit antiserum by affinity-chromatography using epitope-specific immunogen.

<b>Concentration :</b>	1 mg/ml
<b>Storage Stability :</b>	-15°C to -25°C/1 year(Do not lower than -25°C)
<b>Cell Pathway :</b>	Cell adhesion molecules (CAMs);Toll_Like;Intestinal immune network for IgA production;Type I diabetes mellitus;Autoimmune thyroid disease;Systemic lupus erythematosus;Allograft rejection;Graft-versus-
<b>Background :</b>	The protein encoded by this gene is a membrane receptor that is activated by the binding of CD28 or CTLA-4. The activated protein induces T-cell proliferation and cytokine production. This protein can act as a receptor for adenovirus subgroup B and may play a role in lupus neuropathy. [provided by RefSeq, Aug 2011],
<b>Function :</b>	function:Involved in the costimulatory signal essential for T-lymphocyte activation. T-cell proliferation and cytokine production is induced by the binding of CD28 or CTLA-4 to this receptor.,similarity:Contains 1 Ig-like C2-type (immunoglobulin-like) domain.,similarity:Contains 1 Ig-like V-type (immunoglobulin-like) domain.,subunit:Interacts with adenovirus subgroup B fiber proteins and acts as a receptor for these viruses.,tissue specificity:Expressed on activated B-cells, macrophages and dendritic cells.,
<b>Subcellular Location :</b>	Membrane; Single-pass type I membrane protein.
<b>Expression :</b>	Expressed on activated B-cells, macrophages and dendritic cells.
<b>Sort :</b>	1
<b>No4 :</b>	1
<b>Host :</b>	Rabbit
<b>Modifications :</b>	Unmodified

## Products Images



Immunohistochemical analysis of paraffin-embedded Human tonsil, antibody was diluted at 1:100



Immunohistochemical analysis of paraffin-embedded Human colon. 1, Antibody was diluted at 1:400(4° overnight). 2, High-pressure and temperature EDTA, pH8.0 was used for antigen retrieval. 3,Secondary antibody was diluted at 1:200(room temperature, 30min).