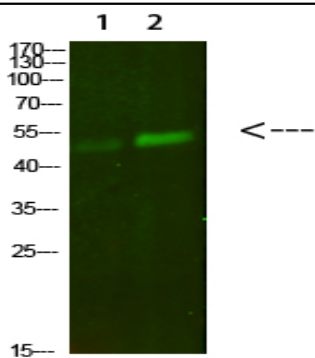


PBEF Polyclonal Antibody

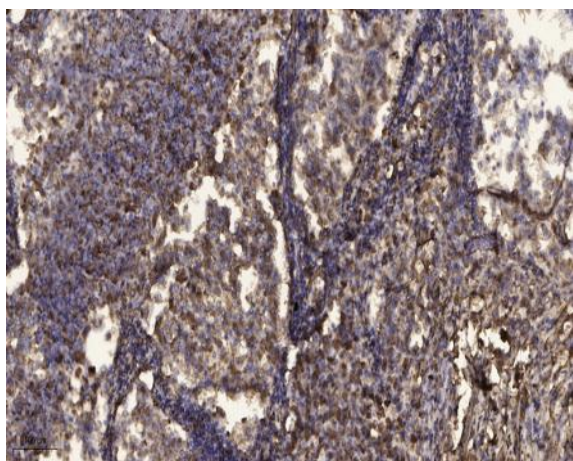
Catalog No :	YT6086
Reactivity :	Human;Mouse;Rat
Applications :	WB;ELISA;IHC
Target :	PBEF
Fields :	>>Nicotinate and nicotinamide metabolism;>>Metabolic pathways;>>NOD-like receptor signaling pathway
Gene Name :	NAMPT
Protein Name :	PBEF
Human Gene Id :	10135
Human Swiss Prot No :	P43490
Mouse Gene Id :	59027
Mouse Swiss Prot No :	Q99KQ4
Immunogen :	Synthesized peptide derived from human PBEF. at AA range: 411-460
Specificity :	PBEF Polyclonal Antibody detects endogenous levels of PBEF
Formulation :	Liquid in PBS containing 50% glycerol, 0.5% BSA and 0.02% sodium azide.
Source :	Polyclonal, Rabbit,IgG
Dilution :	WB 1:500-2000;IHC 1:50-300; ELISA 2000-20000
Purification :	The antibody was affinity-purified from rabbit antiserum by affinity-chromatography using epitope-specific immunogen.
Concentration :	1 mg/ml

Storage Stability :	-15°C to -25°C/1 year(Do not lower than -25°C)
Observed Band :	54kD
Cell Pathway :	Nicotinate and nicotinamide metabolism;
Background :	This gene encodes a protein that catalyzes the condensation of nicotinamide with 5-phosphoribosyl-1-pyrophosphate to yield nicotinamide mononucleotide, one step in the biosynthesis of nicotinamide adenine dinucleotide. The protein belongs to the nicotinic acid phosphoribosyltransferase (NAPRTase) family and is thought to be involved in many important biological processes, including metabolism, stress response and aging. This gene has a pseudogene on chromosome 10. [provided by RefSeq, Feb 2011],
Function :	catalytic activity:Nicotinamide D-ribonucleotide + diphosphate = nicotinamide + 5-phospho-alpha-D-ribose 1-diphosphate.,caution:Was originally (PubMed:8289818) thought to be a cytokine which acts on early B-lineage precursor cells, by enhancing the effect of IL-7 and SCF on pre-B-cell colony formation.,function:Catalyzes the condensation of nicotinamide with 5-phosphoribosyl-1-pyrophosphate to yield nicotinamide mononucleotide, an intermediate in the biosynthesis of NAD. It is the rate limiting component in the mammalian NAD biosynthesis pathway.,pathway:Cofactor biosynthesis; NAD(+) biosynthesis; nicotinamide ribonucleotide from 5-phospho-alpha-D-ribose 1-diphosphate and nicotinamide: step 1/1.,similarity:Belongs to the NAPRTase family.,tissue specificity:Expressed in large amounts in bone marrow, liver tissue, and muscle. Also present in heart, placenta, lung, and kidney tissues.,
Subcellular Location :	Nucleus . Cytoplasm . Secreted . Under non-inflammatory conditions, visfatin predominantly exhibits a granular pattern within the nucleus. Secreted by endothelial cells upon IL-1beta stimulation. Abundantly secreted in milk, reaching 100-fold higher concentrations compared to maternal serum. .
Expression :	Expressed in large amounts in bone marrow, liver tissue, and muscle. Also present in heart, placenta, lung, and kidney tissues.
Sort :	11669
No4 :	1
Host :	Rabbit
Modifications :	Unmodified

Products Images



Western Blot analysis of 1,mouse-lung 2,mouse-kidney cells using primary antibody diluted at 1:500(4°C overnight). Secondary antibody:Goat Anti-rabbit IgG IRDye 800(diluted at 1:5000, 25°C, 1 hour)



Immunohistochemical analysis of paraffin-embedded human Squamous cell carcinoma of lung. 1, Antibody was diluted at 1:200(4° overnight). 2, Tris-EDTA,pH9.0 was used for antigen retrieval. 3,Secondary antibody was diluted at 1:200(room temperature, 45min).