

Kir4.1 rabbit pAb

Catalog No :	YT7795
Reactivity :	Human;Rat;Mouse
Applications :	WB;IHC
Target :	Kir4.1
Fields :	>>Gastric acid secretion;>>Huntington disease
Gene Name :	KCNJ10
Protein Name :	Kir4.1
Human Gene Id :	3766
Human Swiss Prot No :	P78508
Mouse Gene Id :	16513
Mouse Swiss Prot No :	Q9JM63
Rat Gene Id :	29718
Rat Swiss Prot No :	P49655
Immunogen :	Synthesized peptide derived from human Kir4.1 AA range: 160-240
Specificity :	This antibody detects endogenous levels of Human,Rat,Mouse Kir4.1
Formulation :	Liquid in PBS containing 50% glycerol, 0.5% BSA and 0.02% sodium azide.
Source :	Polyclonal, Rabbit,IgG
Dilution :	WB 1:500-2000;IHC 1:50-300
Purification :	The antibody was affinity-purified from rabbit antiserum by affinity-

chromatography using epitope-specific immunogen.

Concentration : 1 mg/ml

Storage Stability : -15°C to -25°C/1 year(Do not lower than -25°C)

Molecularweight : 42kD

Background : This gene encodes a member of the inward rectifier-type potassium channel family, characterized by having a greater tendency to allow potassium to flow into, rather than out of, a cell. The encoded protein may form a heterodimer with another potassium channel protein and may be responsible for the potassium buffering action of glial cells in the brain. Mutations in this gene have been associated with seizure susceptibility of common idiopathic generalized epilepsy syndromes. [provided by RefSeq, Jul 2008],

Function : function:May be responsible for potassium buffering action of glial cells in the brain. Inward rectifier potassium channels are characterized by a greater tendency to allow potassium to flow into the cell rather than out of it. Their voltage dependence is regulated by the concentration of extracellular potassium; as external potassium is raised, the voltage range of the channel opening shifts to more positive voltages. The inward rectification is mainly due to the blockage of outward current by internal magnesium. Can be blocked by extracellular barium and cesium.,similarity:Belongs to the inward rectifier-type potassium channel family.,subunit:Seems to form heterodimer with Kir5.1/KCNJ16. Interacts with INADL.,

Subcellular Location : Membrane ; Multi-pass membrane protein. Basolateral cell membrane . In kidney distal convoluted tubules, located in the basolateral membrane where it colocalizes with KCNJ16. .

Expression : Expressed in kidney (at protein level).

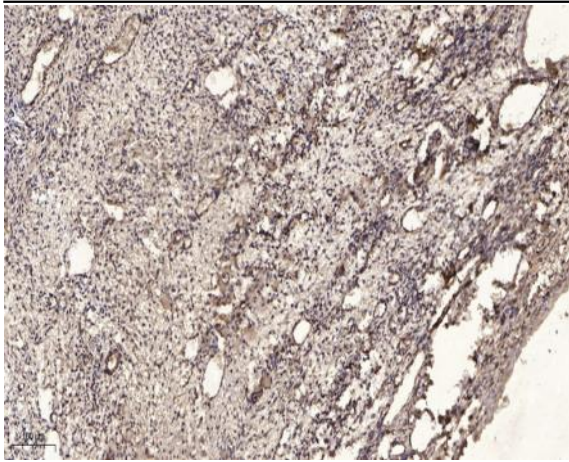
Sort : 8929

No4 : 1

Host : Rabbit

Modifications : Unmodified

Products Images



Immunohistochemical analysis of paraffin-embedded human oophoroma. 1, Antibody was diluted at 1:200(4° overnight). 2, Tris-EDTA,pH9.0 was used for antigen retrieval. 3,Secondary antibody was diluted at 1:200(room temperature, 45min).