

Cleaved-Aggrecan (D369) Polyclonal Antibody

Catalog No :	YC0042
Reactivity :	Human;Rat
Applications :	WB;IHC;IF;ELISA
Target :	Aggrecan
Gene Name :	ACAN
Protein Name :	Aggrecan core protein
Human Gene Id :	176
Human Swiss Prot No :	P16112
Mouse Swiss Prot No :	Q61282
Rat Gene Id :	58968
Rat Swiss Prot No :	P07897
Immunogen :	The antiserum was produced against synthesized peptide derived from human Aggrecan. AA range:320-369
Specificity :	Cleaved-Aggrecan (D369) Polyclonal Antibody detects endogenous levels of fragment of activated Aggrecan protein resulting from cleavage adjacent to D369.
Formulation :	Liquid in PBS containing 50% glycerol, 0.5% BSA and 0.02% sodium azide.
Source :	Polyclonal, Rabbit,IgG
Dilution :	WB 1:500 - 1:2000. IHC 1:100 - 1:300. ELISA: 1:20000.. IF 1:50-200
Purification :	The antibody was affinity-purified from rabbit antiserum by affinity-chromatography using epitope-specific immunogen.
Concentration :	1 mg/ml

Storage Stability : -15°C to -25°C/1 year(Do not lower than -25°C)

Observed Band : 44kD

Background : This gene is a member of the aggrecan/versican proteoglycan family. The encoded protein is an integral part of the extracellular matrix in cartilagenous tissue and it withstands compression in cartilage. Mutations in this gene may be involved in skeletal dysplasia and spinal degeneration. Multiple alternatively spliced transcript variants that encode different protein isoforms have been observed in this gene. [provided by RefSeq, Jul 2008],

Function : alternative products:Additional isoforms seem to exist,developmental stage:Expression was detected in chondrocytes throughout the developing skeleton.,disease:Defects in ACAN are the cause of spondyloepiphyseal dysplasia type Kimberley (SEDK) [MIM:608361]. Spondyloepiphyseal dysplasias are a heterogeneous group of congenital chondrodysplasias that specifically affect epiphyses and vertebrae. The autosomal dominant SEDK is associated with premature degenerative arthropathy.,domain:Two globular domains, G1 and G2, comprise the N-terminus of the proteoglycan, while another globular region, G3, makes up the C-terminus. G1 contains Link domains and thus consists of three disulfide-bonded loop structures designated as the A, B, B' motifs. G2 is similar to G1. The keratan sulfate (KS) and the chondroitin sulfate (CS) attachment domains lie between G2 and G3.,function:This proteoglycan is a majo

Subcellular Location : Secreted, extracellular space, extracellular matrix .

Expression : Restricted to cartilages.

Tag : orthogonal

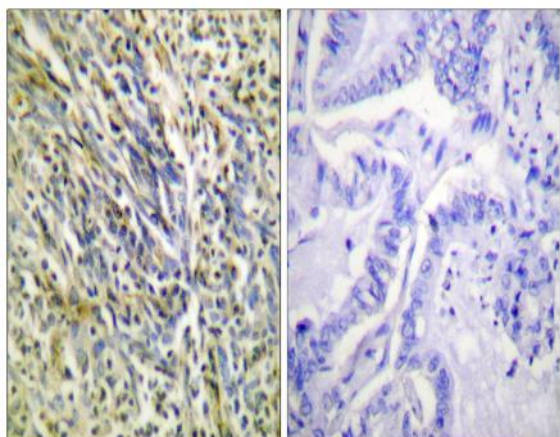
Sort : 1

No4 : 1

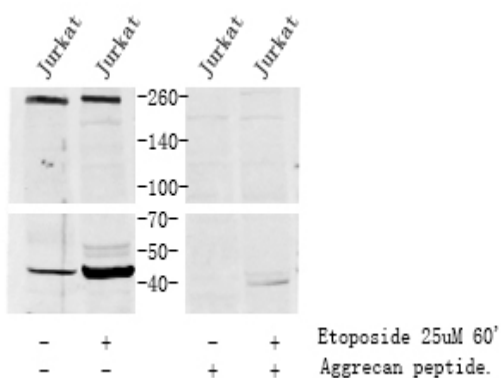
Host : Rabbit

Modifications : Unmodified

Products Images



Immunohistochemistry analysis of paraffin-embedded human lung carcinoma tissue, using Aggrecan (Cleaved-Asp369) Antibody. The picture on the right is blocked with the synthesized peptide.



Western blot analysis of lysates from various cells, using primary antibody dilution at 1:1000.