

## Cleaved-Cathepsin L2 (L114) Polyclonal Antibody

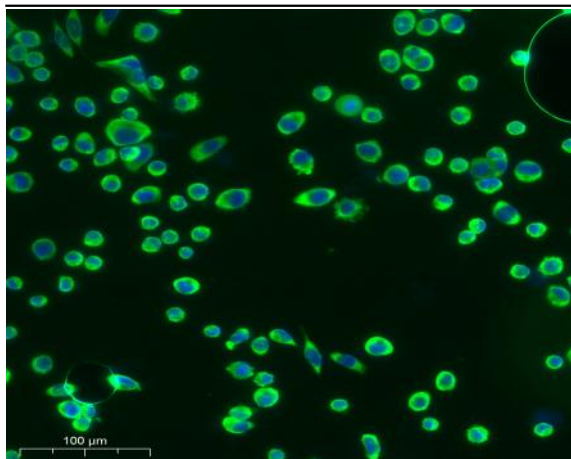
<b>Catalog No :</b>	YC0045
<b>Reactivity :</b>	Human;Monkey
<b>Applications :</b>	WB;ELISA
<b>Target :</b>	Cathepsin L2
<b>Fields :</b>	>>Lysosome;>>Apoptosis
<b>Gene Name :</b>	CTSL2
<b>Protein Name :</b>	Cathepsin L2
<b>Human Gene Id :</b>	1515
<b>Human Swiss Prot No :</b>	O60911
<b>Immunogen :</b>	The antiserum was produced against synthesized peptide derived from human CATL2. AA range:95-144
<b>Specificity :</b>	Cleaved-Cathepsin L2 (L114) Polyclonal Antibody detects endogenous levels of fragment of activated Cathepsin L2 protein resulting from cleavage adjacent to L114.
<b>Formulation :</b>	Liquid in PBS containing 50% glycerol, 0.5% BSA and 0.02% sodium azide.
<b>Source :</b>	Polyclonal, Rabbit,IgG
<b>Dilution :</b>	WB 1:500 - 1:2000. ELISA: 1:20000. Not yet tested in other applications.
<b>Purification :</b>	The antibody was affinity-purified from rabbit antiserum by affinity-chromatography using epitope-specific immunogen.
<b>Concentration :</b>	1 mg/ml
<b>Storage Stability :</b>	-15°C to -25°C/1 year(Do not lower than -25°C)

---

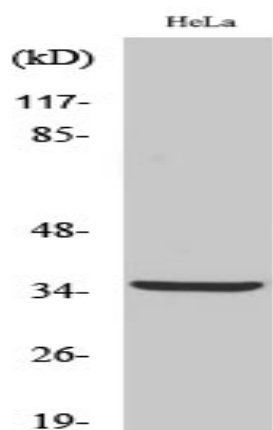
<b>Observed Band :</b>	37kD
<b>Cell Pathway :</b>	Lysosome;
<b>Background :</b>	The protein encoded by this gene, a member of the peptidase C1 family, is a lysosomal cysteine proteinase that may play an important role in corneal physiology. This gene is expressed in colorectal and breast carcinomas but not in normal colon, mammary gland, or peritumoral tissues, suggesting a possible role for this gene in tumor processes. Alternatively spliced variants, encoding the same protein, have been identified. [provided by RefSeq, Jan 2011],
<b>Function :</b>	catalytic activity:The recombinant enzyme hydrolyzes proteins (serum albumin, collagen) and synthetic substrates (Z-Phe-Arg-NHMec > Z-Leu-Arg-NHMec > Z-Val-Arg-NHMec).,function:Cysteine protease. May have an important role in corneal physiology.,similarity:Belongs to the peptidase C1 family.,tissue specificity:Predominantly expressed in the thymus and testis. Also expressed in corneal epithelium, and to a lesser extent in conjunctival epithelium and skin.,
<b>Subcellular Location :</b>	Lysosome .
<b>Expression :</b>	Predominantly expressed in the thymus and testis. Also expressed in corneal epithelium, and to a lesser extent in conjunctival epithelium and skin.
<b>Tag :</b>	orthogonal
<b>Sort :</b>	4184
<b>No4 :</b>	1
<b>Host :</b>	Rabbit
<b>Modifications :</b>	Unmodified

---

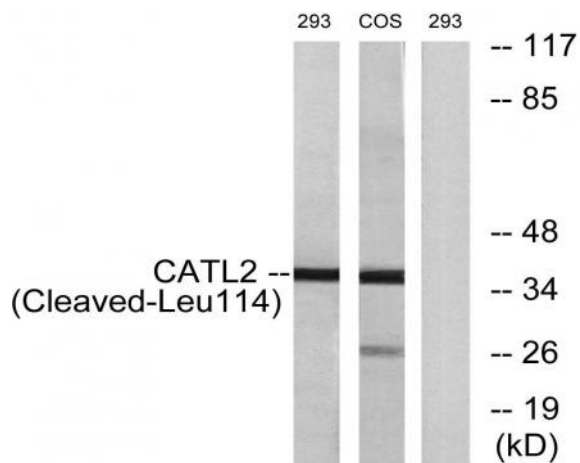
## Products Images



Immunofluorescence analysis of SiHa cell. 1, primary Antibody was diluted at 1:100(4°C overnight). 2, Goat Anti Rabbit IgG (H&L) - AFuor 488 Secondary antibody (catalog No:RS3211) was diluted at 1:500(room temperature, 50min).



Western Blot analysis of various cells using Cleaved-Cathepsin L2 (L114) Polyclonal Antibody



Western blot analysis of lysates from 293 and COS cells, treated with etoposide 25uM 1h, using CATL2 (Cleaved-Leu114) Antibody. The lane on the right is blocked with the synthesized peptide.