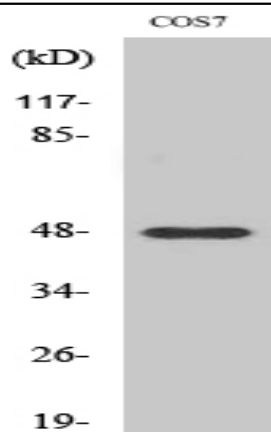


Cleaved-MMP-27 (Y99) Polyclonal Antibody

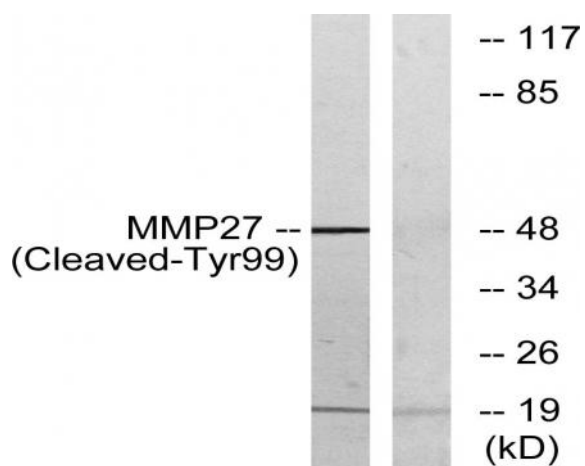
| | |
|------------------------------|-----------------------------------------------------------------------------------------------------------------------------------------------------|
| Catalog No : | YC0065 |
| Reactivity : | Human;Monkey |
| Applications : | WB;ELISA |
| Target : | MMP-27 |
| Gene Name : | MMP27 |
| Protein Name : | Matrix metalloproteinase-27 |
| Human Gene Id : | 64066 |
| Human Swiss Prot No : | Q9H306 |
| Immunogen : | The antiserum was produced against synthesized peptide derived from human MMP27. AA range:80-129 |
| Specificity : | Cleaved-MMP-27 (Y99) Polyclonal Antibody detects endogenous levels of fragment of activated MMP-27 protein resulting from cleavage adjacent to Y99. |
| Formulation : | Liquid in PBS containing 50% glycerol, 0.5% BSA and 0.02% sodium azide. |
| Source : | Polyclonal, Rabbit,IgG |
| Dilution : | WB 1:500 - 1:2000. ELISA: 1:10000. Not yet tested in other applications. |
| Purification : | The antibody was affinity-purified from rabbit antiserum by affinity-chromatography using epitope-specific immunogen. |
| Concentration : | 1 mg/ml |
| Storage Stability : | -15°C to -25°C/1 year(Do not lower than -25°C) |
| Observed Band : | 48kD |
| Cell Pathway : | Angiogenesis |

| | |
|-------------------------------|---------------------------------------------------------------------------------------------------------------------------------------------------------------------------------------------------------------------------------------------------------------------------------------------------------------------------------------------------------------------------------------------------------------------------------------------------------------------------------------------------------------------------------------------------------------------------------------------------------------------------------------|
| Background : | Proteins of the matrix metalloproteinase (MMP) family are involved in the breakdown of extracellular matrix in normal physiological processes, such as embryonic development, reproduction, and tissue remodeling, as well as in disease processes, such as arthritis and metastasis. Most MMP's are secreted as inactive proproteins which are activated when cleaved by extracellular proteinases. [provided by RefSeq, Jul 2008], |
| Function : | cofactor: Binds 2 zinc ions per subunit., cofactor: Binds 4 calcium ions per subunit., domain: The conserved cysteine present in the cysteine-switch motif binds the catalytic zinc ion, thus inhibiting the enzyme. The dissociation of the cysteine from the zinc ion upon the activation-peptide release activates the enzyme., function: Matrix metalloproteinases degrade protein components of the extracellular matrix such as fibronectin, laminin, gelatins and/or collagens., similarity: Belongs to the peptidase M10A family., similarity: Contains 4 hemopexin-like domains., tissue specificity: Expressed in B-cells., |
| Subcellular Location : | Endoplasmic reticulum membrane; Peripheral membrane protein . Retained in the endoplasmic reticulum. . |
| Expression : | Expressed in B-cells (PubMed:14506071). Expressed in a subset of endometrial macrophages related to menstruation and in ovarian and peritoneal endometriotic lesions (at protein level)(PubMed:24810263). |
| Tag : | orthogonal |
| Sort : | 4246 |
| No4 : | 1 |
| Host : | Rabbit |
| Modifications : | Unmodified |

Products Images



Western Blot analysis of various cells using Cleaved-MMP-27 (Y99) Polyclonal Antibody



Western blot analysis of lysates from COS7 cells, treated with etoposide 25uM 1h, using MMP27 (Cleaved-Tyr99) Antibody. The lane on the right is blocked with the synthesized peptide.