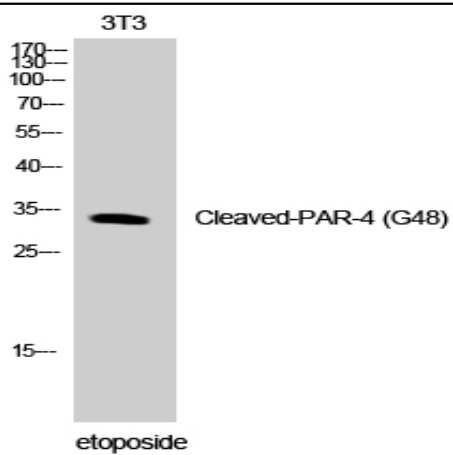


Cleaved-PAR-4 (G48) Polyclonal Antibody

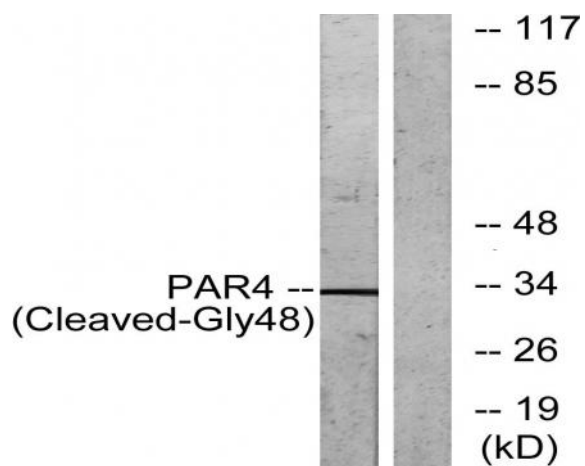
Catalog No :	YC0072
Reactivity :	Human;Rat;Mouse;
Applications :	WB;ELISA
Target :	PAR-4
Fields :	>>Rap1 signaling pathway;>>Neuroactive ligand-receptor interaction;>>Complement and coagulation cascades;>>Platelet activation;>>Pathways in cancer
Gene Name :	F2RL3
Protein Name :	Proteinase-activated receptor 4
Human Gene Id :	9002
Human Swiss Prot No :	Q96RI0
Mouse Swiss Prot No :	O88634
Immunogen :	The antiserum was produced against synthesized peptide derived from human PAR4. AA range:29-78
Specificity :	Cleaved-PAR-4 (G48) Polyclonal Antibody detects endogenous levels of fragment of activated PAR-4 protein resulting from cleavage adjacent to G48.
Formulation :	Liquid in PBS containing 50% glycerol, 0.5% BSA and 0.02% sodium azide.
Source :	Polyclonal, Rabbit,IgG
Dilution :	WB 1:500 - 1:2000. ELISA: 1:5000. Not yet tested in other applications.
Purification :	The antibody was affinity-purified from rabbit antiserum by affinity-chromatography using epitope-specific immunogen.
Concentration :	1 mg/ml

Storage Stability :	-15°C to -25°C/1 year(Do not lower than -25°C)
Observed Band :	33kD
Cell Pathway :	Neuroactive ligand-receptor interaction;
Background :	This gene encodes a member of the protease-activated receptor subfamily, part of the G-protein coupled receptor 1 family of proteins. The encoded receptor is proteolytically processed to reveal an extracellular N-terminal tethered ligand that binds to and activates the receptor. This receptor plays a role in blood coagulation, inflammation and response to pain. Hypomethylation at this gene may be associated with lung cancer in human patients. [provided by RefSeq, Sep 2016],
Function :	function:Receptor for activated thrombin or trypsin coupled to G proteins that stimulate phosphoinositide hydrolysis. May play a role in platelets activation.,PTM:A proteolytic cleavage generates a new N-terminus that functions as a tethered ligand.,similarity:Belongs to the G-protein coupled receptor 1 family.,tissue specificity:Widely expressed, with highest levels in lung, pancreas, thyroid, testis and small intestine. Not expressed in brain, kidney, spinal cord and peripheral blood leukocytes. Also detected in platelets.,
Subcellular Location :	Cell membrane; Multi-pass membrane protein.
Expression :	Widely expressed, with highest levels in lung, pancreas, thyroid, testis and small intestine. Not expressed in brain, kidney, spinal cord and peripheral blood leukocytes. Also detected in platelets.
Tag :	orthogonal
Sort :	4255
No4 :	1
Host :	Rabbit
Modifications :	Unmodified

Products Images



Western Blot analysis of NIH-3T3 cells using Cleaved-PAR-4 (G48) Polyclonal Antibody



Western blot analysis of lysates from NIH/3T3 cells, treated with etoposide 25uM 1h, using PAR4 (Cleaved-Gly48) Antibody. The lane on the right is blocked with the synthesized peptide.