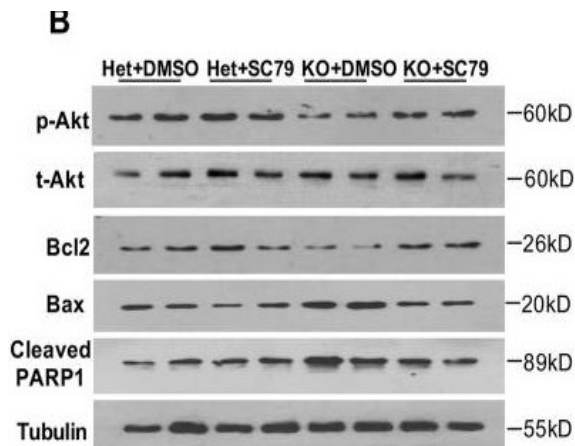


Cleaved-PARP-1 (G215) Polyclonal Antibody

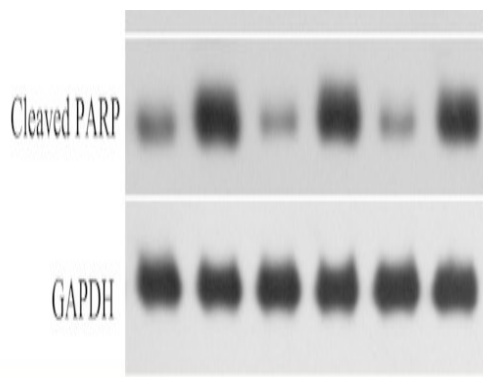
Catalog No :	YC0073
Reactivity :	Human;Mouse;Rat
Applications :	WB;ELISA
Target :	PARP
Fields :	>>Base excision repair;>>NF-kappa B signaling pathway;>>Apoptosis;>>Necroptosis;>>Diabetic cardiomyopathy
Gene Name :	PARP1
Protein Name :	Poly [ADP-ribose] polymerase 1
Human Gene Id :	142
Human Swiss Prot No :	P09874
Mouse Swiss Prot No :	P11103
Immunogen :	The antiserum was produced against synthesized peptide derived from human PARP. AA range:196-245
Specificity :	Cleaved-PARP-1 (G215) Polyclonal Antibody detects endogenous levels of fragment of activated PARP-1 protein resulting from cleavage adjacent to G215.
Formulation :	Liquid in PBS containing 50% glycerol, 0.5% BSA and 0.02% sodium azide.
Source :	Polyclonal, Rabbit,IgG
Dilution :	WB 1:500 - 1:2000. ELISA: 1:5000. Not yet tested in other applications.
Purification :	The antibody was affinity-purified from rabbit antiserum by affinity-chromatography using epitope-specific immunogen.
Concentration :	1 mg/ml

Storage Stability :	-15°C to -25°C/1 year(Do not lower than -25°C)
Observed Band :	89kD
Cell Pathway :	Base excision repair;
Background :	This gene encodes a chromatin-associated enzyme, poly(ADP-ribose)transferase, which modifies various nuclear proteins by poly(ADP-ribose)ation. The modification is dependent on DNA and is involved in the regulation of various important cellular processes such as differentiation, proliferation, and tumor transformation and also in the regulation of the molecular events involved in the recovery of cell from DNA damage. In addition, this enzyme may be the site of mutation in Fanconi anemia, and may participate in the pathophysiology of type I diabetes. [provided by RefSeq, Jul 2008],
Function :	catalytic activity:NAD(+) + (ADP-D-ribose)(n)-acceptor = nicotinamide + (ADP-D-ribose)(n+1)-acceptor.,function:Involved in the base excision repair (BER) pathway, by catalyzing the poly(ADP-ribose)ation of a limited number of acceptor proteins involved in chromatin architecture and in DNA metabolism. This modification follows DNA damages and appears as an obligatory step in a detection/signaling pathway leading to the reparation of DNA strand breaks.,miscellaneous:The ADP-D-ribose group of NAD(+) is transferred to an acceptor carboxyl group on a histone or the enzyme itself, and further ADP-ribose groups are transferred to the 2'-position of the terminal adenosine moiety, building up a polymer with an average chain length of 20-30 units.,PTM:Phosphorylated by PRKDC. Phosphorylated upon DNA damage, probably by ATM or ATR.,PTM:Poly-ADP-riboseylated by PARP2.,similarity:Contains 1 BRCT
Subcellular Location :	Nucleus . Nucleus, nucleolus . Chromosome . Localizes to sites of DNA damage.
Expression :	Brain,Colon carcinoma,Fibroblast,Lung,Ovarian carcinoma,Skin,
Tag :	orthogonal,hot
Sort :	264
No4 :	1
Host :	Rabbit
Modifications :	Unmodified

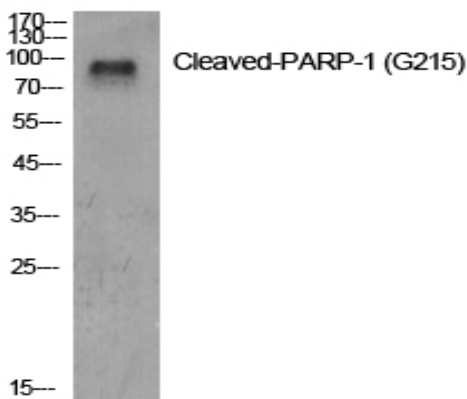
Products Images



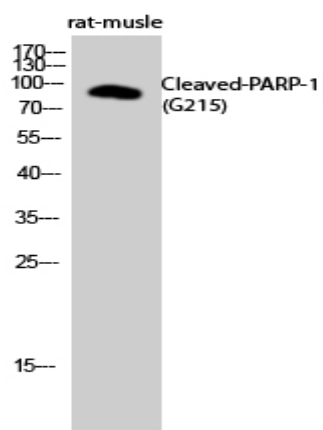
Wang, Bin, et al. "Loss of Tctn3 causes neuronal apoptosis and neural tube defects in mice." *Cell death & disease* 9.5 (2018): 520.



Mao, Dongwei, et al. "RNAi-mediated knockdown of the CLN3 gene inhibits proliferation and promotes apoptosis in drug-resistant ovarian cancer cells." *Molecular medicine reports* 12.5 (2015): 6635-6641.



Western Blot analysis of various cells using Cleaved-PARP-1 (G215) Polyclonal Antibody diluted at 1:500



Western Blot analysis of rat-muscle cells using Cleaved-PARP-1 (G215) Polyclonal Antibody diluted at 1:500