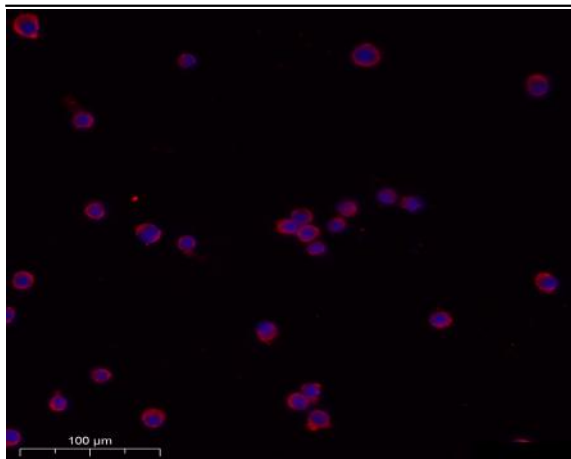


CATL1 (heavy chain, Cleaved-Ala114) rabbit pAb

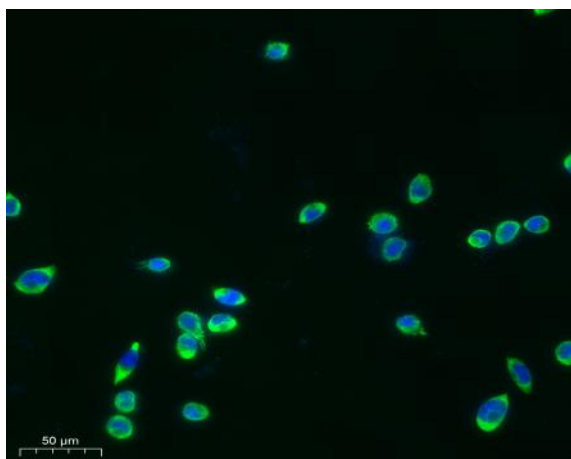
Catalog No :	YC0124
Reactivity :	Human;Rat;Mouse;
Applications :	WB;ELISA
Target :	Cathepsin L
Fields :	>>Autophagy - animal;>>Lysosome;>>Phagosome;>>Apoptosis;>>Antigen processing and presentation;>>Proteoglycans in cancer;>>Rheumatoid arthritis;>>Fluid shear stress and atherosclerosis
Gene Name :	CTSL1 CTSL
Protein Name :	CATL1 (heavy chain, Cleaved-Ala114)
Human Gene Id :	1514
Human Swiss Prot No :	P07711
Mouse Gene Id :	13039
Mouse Swiss Prot No :	P06797
Rat Gene Id :	25697
Rat Swiss Prot No :	P07154
Immunogen :	Synthesized peptide derived from human CATL1 (heavy chain, Cleaved-Ala114)
Specificity :	This antibody detects endogenous levels of Human CATL1 (heavy chain, Cleaved-Ala114, protein was cleaved amino acid sequence between 113-114)
Formulation :	Liquid in PBS containing 50% glycerol, 0.5% BSA and 0.02% sodium azide.
Source :	Polyclonal, Rabbit,IgG
Dilution :	WB 1:1000-2000 ELISA 1:5000-20000

Purification :	The antibody was affinity-purified from rabbit serum by affinity-chromatography using specific immunogen.
Concentration :	1 mg/ml
Storage Stability :	-15°C to -25°C/1 year(Do not lower than -25°C)
Observed Band :	25 37kD
Background :	catalytic activity:Specificity close to that of papain. As compared to cathepsin B, cathepsin L exhibits higher activity toward protein substrates, but has little activity on Z-Arg-Arg-NHMec, and no peptidyl-dipeptidase activity.,function:Important for the overall degradation of proteins in lysosomes.,similarity:Belongs to the peptidase C1 family.,subunit:Dimer of a heavy and a light chain linked by disulfide bonds.,
Function :	proteolysis,
Subcellular Location :	Lysosome . Apical cell membrane ; Peripheral membrane protein ; Extracellular side . Cytoplasmic vesicle, secretory vesicle, chromaffin granule . Secreted, extracellular space . Secreted . Localizes to the apical membrane of thyroid epithelial cells. Released at extracellular space by activated dendritic cells and macrophages. . ; [Isoform 2]: Nucleus . Translation initiation at downstream start sites allows the synthesis of isoforms that are devoid of a signal peptide and do not transit through the endoplasmic reticulum to localize to the nucleus (PubMed:15099520). Nuclear location varies during the cell cycle, with higher levels during S phase (PubMed:15099520). .
Sort :	3230
No4 :	1
Host :	Rabbit
Modifications :	Unmodified

Products Images



Immunofluorescence analysis of SiHa cell. 1,primary Antibody was diluted at 1:100(4°C overnight). 2, Goat Anti Rabbit IgG (H&L) - AFfluor 594 Secondary antibody(catalog No: RS3611) was diluted at 1:500(room temperature, 50min).



Immunofluorescence analysis of SiHa cell. 1,primary Antibody was diluted at 1:100(4°C overnight). 2, Goat Anti Rabbit IgG (H&L) - AFfluor 488 Secondary antibody (catalog No:RS3211) was diluted at 1:500(room temperature, 50min).