

**ITGAE (light chain, Cleaved-Arg177) rabbit pAb**

<b>Catalog No :</b>	YC0173
<b>Reactivity :</b>	Human;Rat;Mouse;
<b>Applications :</b>	WB;IHC
<b>Target :</b>	ITGAE
<b>Fields :</b>	>>Regulation of actin cytoskeleton
<b>Gene Name :</b>	ITGAE
<b>Protein Name :</b>	ITGAE (light chain, Cleaved-Arg177)
<b>Human Gene Id :</b>	3682
<b>Human Swiss Prot No :</b>	P38570
<b>Mouse Gene Id :</b>	16407
<b>Mouse Swiss Prot No :</b>	Q60677
<b>Immunogen :</b>	Synthesized peptide derived from human ITGAE (light chain, Cleaved-Arg177)
<b>Specificity :</b>	This antibody detects endogenous levels of Human ITGAE (light chain, Cleaved-Arg177, protein was cleaved amino acid sequence between 177-178 )
<b>Formulation :</b>	Liquid in PBS containing 50% glycerol, 0.5% BSA and 0.02% sodium azide.
<b>Source :</b>	Polyclonal, Rabbit,IgG
<b>Dilution :</b>	WB 1:500-2000;IHC 1:50-300
<b>Purification :</b>	The antibody was affinity-purified from rabbit serum by affinity-chromatography using specific immunogen.
<b>Concentration :</b>	1 mg/ml

**Storage Stability :** -15°C to -25°C/1 year(Do not lower than -25°C)

**Observed Band :** 17 128kD

**Background :** integrin subunit alpha E(ITGAE) Homo sapiens Integrins are heterodimeric integral membrane proteins composed of an alpha chain and a beta chain. This gene encodes an I-domain-containing alpha integrin that undergoes post-translational cleavage in the extracellular domain, yielding disulfide-linked heavy and light chains. In combination with the beta 7 integrin, this protein forms the E-cadherin binding integrin known as the human mucosal lymphocyte-1 antigen. This protein is preferentially expressed in human intestinal intraepithelial lymphocytes (IEL), and in addition to a role in adhesion, it may serve as an accessory molecule for IEL activation. [provided by RefSeq, Jul 2008],

**Function :** domain:The integrin I-domain (insert) is a VWFA domain. Integrins with I-domains do not undergo protease cleavage.,function:Integrin alpha-E/beta-7 is a receptor for E-cadherin. It mediates adhesion of intra-epithelial T-lymphocytes to epithelial cell monolayers.,induction:Integrin alpha-E/beta-7 is induced by TGFB1.,similarity:Belongs to the integrin alpha chain family.,similarity:Contains 1 VWFA domain.,similarity:Contains 5 FG-GAP repeats.,subunit:Heterodimer of an alpha and a beta subunit. The alpha subunit is composed of an heavy and a light chains linked by a disulfide bond. Alpha-E associates with beta-7.,tissue specificity:Expressed on a subclass of T-lymphocytes known as intra-epithelial lymphocytes which are located between mucosal epithelial cells.,

**Subcellular Location :** Membrane; Single-pass type I membrane protein.

**Expression :** Expressed on a subclass of T-lymphocytes known as intra-epithelial lymphocytes which are located between mucosal epithelial cells.

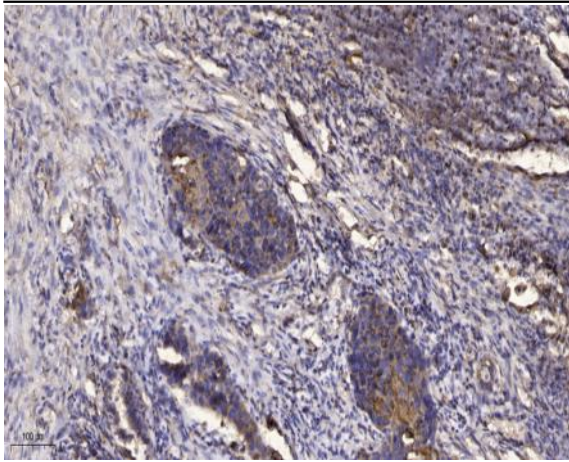
**Sort :** 8725

**No4 :** 1

**Host :** Rabbit

**Modifications :** Unmodified

## Products Images



Immunohistochemical analysis of paraffin-embedded human Squamous cell carcinoma of lung. 1, Antibody was diluted at 1:200(4° overnight). 2, Tris-EDTA,pH9.0 was used for antigen retrieval. 3,Secondary antibody was diluted at 1:200(room temperature, 45min).