

**ITGA2B (heavy chain, Cleaved-Leu32) rabbit pAb**

<b>Catalog No :</b>	YC0174
<b>Reactivity :</b>	Human;Rat;Mouse;
<b>Applications :</b>	WB;IHC
<b>Target :</b>	CD41
<b>Fields :</b>	>>Rap1 signaling pathway;>>PI3K-Akt signaling pathway;>>Focal adhesion;>>ECM-receptor interaction;>>Platelet activation;>>Neutrophil extracellular trap formation;>>Hematopoietic cell lineage;>>Regulation of actin cytoskeleton;>>Human papillomavirus infection;>>Pathways in cancer;>>Small cell lung cancer;>>Hypertrophic cardiomyopathy;>>Arrhythmogenic right ventricular cardiomyopathy;>>Dilated cardiomyopathy;>>Fluid shear stress and atherosclerosis
<b>Gene Name :</b>	ITGA2B GP2B ITGAB
<b>Protein Name :</b>	ITGA2B (heavy chain, Cleaved-Leu32)
<b>Human Gene Id :</b>	3674
<b>Human Swiss Prot No :</b>	P08514
<b>Mouse Gene Id :</b>	16399
<b>Mouse Swiss Prot No :</b>	Q9QUM0
<b>Immunogen :</b>	Synthesized peptide derived from human ITGA2B (heavy chain, Cleaved-Leu32)
<b>Specificity :</b>	This antibody detects endogenous levels of Human ITGA2B (heavy chain, Cleaved-Leu32, protein was cleaved amino acid sequence between 31-32 )
<b>Formulation :</b>	Liquid in PBS containing 50% glycerol, 0.5% BSA and 0.02% sodium azide.
<b>Source :</b>	Polyclonal, Rabbit,IgG
	WB 1:500-2000;IHC 1:50-300

**Purification :** The antibody was affinity-purified from rabbit serum by affinity-chromatography using specific immunogen.

---

**Concentration :** 1 mg/ml

---

**Storage Stability :** -15°C to -25°C/1 year(Do not lower than -25°C)

---

**Observed Band :** 95 110kD

---

**Background :** This gene encodes a member of the integrin alpha chain family of proteins. The encoded preproprotein is proteolytically processed to generate light and heavy chains that associate through disulfide linkages to form a subunit of the alpha-IIb/beta-3 integrin cell adhesion receptor. This receptor plays a crucial role in the blood coagulation system, by mediating platelet aggregation. Mutations in this gene are associated with platelet-type bleeding disorders, which are characterized by a failure of platelet aggregation, including Glanzmann thrombasthenia. [provided by RefSeq, Jan 2016],

---

**Function :** disease:Defects in ITGA2B are a cause of Glanzmann thrombasthenia (GT) [MIM:273800]; also known as thrombasthenia of Glanzmann and Naegeli. This autosomal recessive disorder is the most common inherited disease of platelets. GT is characterized by mucocutaneous bleeding of mild-to-moderate severity and the inability of this integrin to recognize macromolecular or synthetic peptide ligands. GT has been classified clinically into types I and II. In type I, platelets show absence of the glycoprotein IIb/beta-3 complexes at their surface and lack fibrinogen and clot retraction capability. In type II, the platelets express the glycoprotein IIb/beta-3 complex at reduced levels (5-20% controls), have detectable amounts of fibrinogen, and have low or moderate clot retraction capability. The platelets of GT 'variants' have normal or near normal (60-100%) expression of dysfunctional receptors.,fun

---

**Subcellular Location :** Membrane; Single-pass type I membrane protein.

---

**Expression :** Isoform 1 and isoform 2 are expressed in platelets and megakaryocytes, but not in reticulocytes. Not detected in Jurkat, nor in U937 cell lines (PubMed:2351656). Isoform 3 is expressed in prostate adenocarcinoma, as well as in several erythroleukemia, prostate adenocarcinoma and melanoma cell lines, including PC-3, DU-145, HEL, WM983A, WM983B and WM35. Not detected in platelets, nor in normal prostate (at protein level) (PubMed:9809974).

---

**Sort :** 8718

---

**No4 :** 1

---

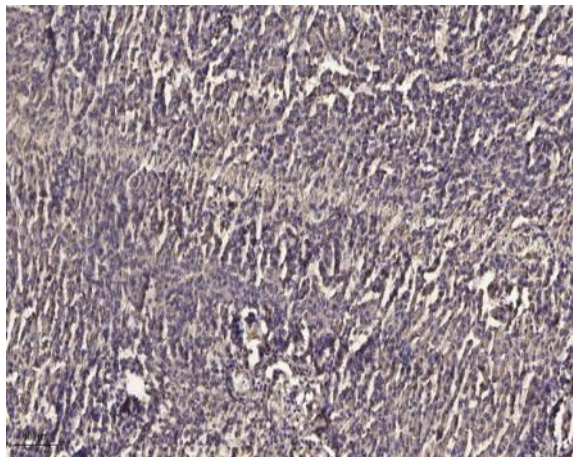
**Host :** Rabbit

---

**Modifications :** Unmodified

---

## Products Images



Immunohistochemical analysis of paraffin-embedded human meningioma. 1, Antibody was diluted at 1:200(4° overnight). 2, Tris-EDTA,pH9.0 was used for antigen retrieval. 3,Secondary antibody was diluted at 1:200(room temperature, 45min).