

**ITGAV (light chain, Cleaved-Asp891) rabbit pAb**

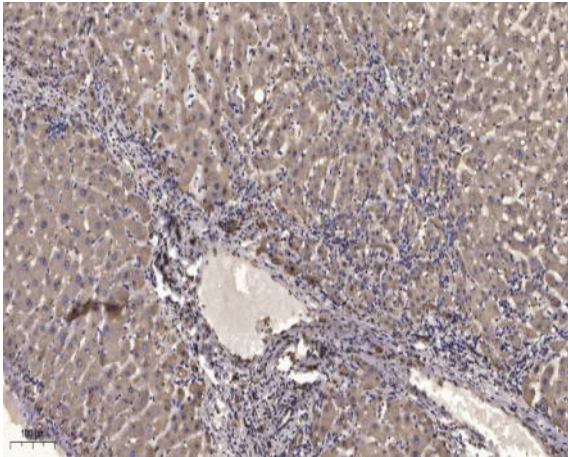
<b>Catalog No :</b>	YC0176
<b>Reactivity :</b>	Human;Mouse
<b>Applications :</b>	WB;ELISA;IHC
<b>Target :</b>	ITGAV
<b>Fields :</b>	>>Phagosome;>>PI3K-Akt signaling pathway;>>Focal adhesion;>>ECM-receptor interaction;>>Cell adhesion molecules;>>Regulation of actin cytoskeleton;>>Thyroid hormone signaling pathway;>>Human cytomegalovirus infection;>>Human papillomavirus infection;>>Pathways in cancer;>>Proteoglycans in cancer;>>Small cell lung cancer;>>Hypertrophic cardiomyopathy;>>Arrhythmogenic right ventricular cardiomyopathy;>>Dilated cardiomyopathy;>>Fluid shear stress and atherosclerosis
<b>Gene Name :</b>	ITGAV MSK8 VNRA
<b>Protein Name :</b>	ITGAV (light chain, Cleaved-Asp891)
<b>Human Gene Id :</b>	3685
<b>Human Swiss Prot No :</b>	P06756
<b>Mouse Gene Id :</b>	16410
<b>Mouse Swiss Prot No :</b>	P43406
<b>Immunogen :</b>	Synthesized peptide derived from human ITGAV (light chain, Cleaved-Asp891)
<b>Specificity :</b>	This antibody detects endogenous levels of Human,Mouse ITGAV (light chain, Cleaved-Asp891, protein was cleaved amino acid sequence between 890-891 )
<b>Formulation :</b>	Liquid in PBS containing 50% glycerol, 0.5% BSA and 0.02% sodium azide.
<b>Source :</b>	Polyclonal, Rabbit,IgG
<b>Dilution :</b>	WB 1:500-2000;IHC 1:50-300; ELISA 2000-20000

---

<b>Purification :</b>	The antibody was affinity-purified from rabbit serum by affinity-chromatography using specific immunogen.
<b>Concentration :</b>	1 mg/ml
<b>Storage Stability :</b>	-15°C to -25°C/1 year(Do not lower than -25°C)
<b>Observed Band :</b>	17 110kD
<b>Background :</b>	<p>integrin subunit alpha V(ITGAV) Homo sapiens The product of this gene belongs to the integrin alpha chain family. Integrins are heterodimeric integral membrane proteins composed of an alpha subunit and a beta subunit that function in cell surface adhesion and signaling. The encoded preproprotein is proteolytically processed to generate light and heavy chains that comprise the alpha V subunit. This subunit associates with beta 1, beta 3, beta 5, beta 6 and beta 8 subunits. The heterodimer consisting of alpha V and beta 3 subunits is also known as the vitronectin receptor. This integrin may regulate angiogenesis and cancer progression. Alternative splicing results in multiple transcript variants. Note that the integrin alpha 5 and integrin alpha V subunits are encoded by distinct genes. [provided by RefSeq, Oct 2015],</p>
<b>Function :</b>	<p>function:The alpha-V integrins are receptors for vitronectin, cytotoxin, fibronectin, fibrinogen, laminin, matrix metalloproteinase-2, osteopontin, osteomodulin, prothrombin, thrombospondin and vWF. They recognize the sequence R-G-D in a wide array of ligands. In case of HIV-1 infection, the interaction with extracellular viral Tat protein seems to enhance angiogenesis in Kaposi's sarcoma lesions.,similarity:Belongs to the integrin alpha chain family.,similarity:Contains 7 FG-GAP repeats.,subunit:Heterodimer of an alpha and a beta subunit. The alpha subunit is composed of an heavy and a light chain linked by a disulfide bond. Alpha-V associates with either beta-1, beta-3, beta-5, beta-6 or beta-8 subunit. Interacts with HIV-1 Tat. Alpha-V/beta-6 binds to foot-and-mouth disease virus (FMDV) VP1 protein and acts as a receptor for this virus (By similarity). Alpha-V/beta-6 binds to coxsack</p>
<b>Subcellular Location :</b>	Cell membrane; Single-pass type I membrane protein. Cell junction, focal adhesion .
<b>Sort :</b>	8726
<b>No4 :</b>	1
<b>Host :</b>	Rabbit
<b>Modifications :</b>	Unmodified

---

## Products Images



Immunohistochemical analysis of paraffin-embedded human liver cancer. 1, Antibody was diluted at 1:200(4° overnight). 2, Tris-EDTA,pH9.0 was used for antigen retrieval. 3,Secondary antibody was diluted at 1:200(room temperature, 45min).