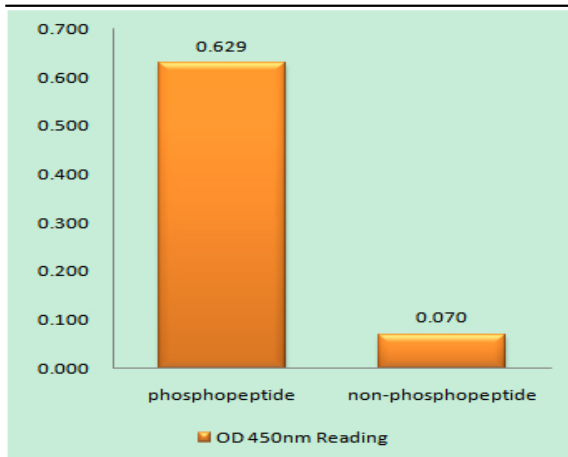


CPI-17 (phospho Thr38) Polyclonal Antibody

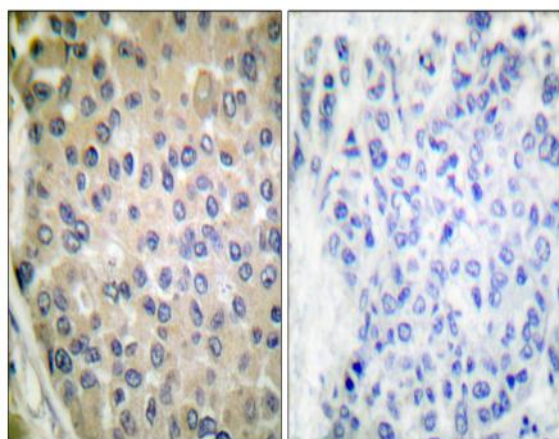
| | |
|------------------------------|---|
| Catalog No : | YP0073 |
| Reactivity : | Human;Mouse;Rat |
| Applications : | WB;IHC;IF;ELISA |
| Target : | CPI-17 |
| Fields : | >>Vascular smooth muscle contraction |
| Gene Name : | PPP1R14A |
| Protein Name : | Protein phosphatase 1 regulatory subunit 14A |
| Human Gene Id : | 94274 |
| Human Swiss Prot No : | Q96A00 |
| Mouse Gene Id : | 68458 |
| Mouse Swiss Prot No : | Q91VC7 |
| Rat Gene Id : | 114004 |
| Rat Swiss Prot No : | Q99MC0 |
| Immunogen : | The antiserum was produced against synthesized peptide derived from human CPI17 alpha around the phosphorylation site of Thr38. AA range:5-54 |
| Specificity : | Phospho-CPI-17 (T38) Polyclonal Antibody detects endogenous levels of CPI-17 protein only when phosphorylated at T38. |
| Formulation : | Liquid in PBS containing 50% glycerol, 0.5% BSA and 0.02% sodium azide. |
| Source : | Polyclonal, Rabbit,IgG |
| Dilution : | WB 1:500 - 1:2000. IHC 1:100 - 1:300. ELISA: 1:20000.. IF 1:50-200 |

| | |
|-------------------------------|---|
| Purification : | The antibody was affinity-purified from rabbit antiserum by affinity-chromatography using epitope-specific immunogen. |
| Concentration : | 1 mg/ml |
| Storage Stability : | -15°C to -25°C/1 year(Do not lower than -25°C) |
| Observed Band : | 22kD |
| Cell Pathway : | Vascular smooth muscle contraction; |
| Background : | The protein encoded by this gene belongs to the protein phosphatase 1 (PP1) inhibitor family. This protein is an inhibitor of smooth muscle myosin phosphatase, and has higher inhibitory activity when phosphorylated. Inhibition of myosin phosphatase leads to increased myosin phosphorylation and enhanced smooth muscle contraction. Alternatively spliced transcript variants encoding different isoforms have been noted for this gene. [provided by RefSeq, Sep 2011], |
| Function : | function:Inhibitor of PPP1CA. Has over 1000-fold higher inhibitory activity when phosphorylated, creating a molecular switch for regulating the phosphorylation status of PPP1CA substrates and smooth muscle contraction.,similarity:Belongs to the PP1 inhibitor family.,tissue specificity:Isoform 1 is detected in aorta and testis. Isoform 2 is detected in aorta., |
| Subcellular Location : | Cytoplasm . |
| Expression : | Isoform 1 is detected in aorta and testis. Isoform 2 is detected in aorta. |
| Sort : | 4503 |
| No4 : | 1 |
| Host : | Rabbit |
| Modifications : | Phospho |

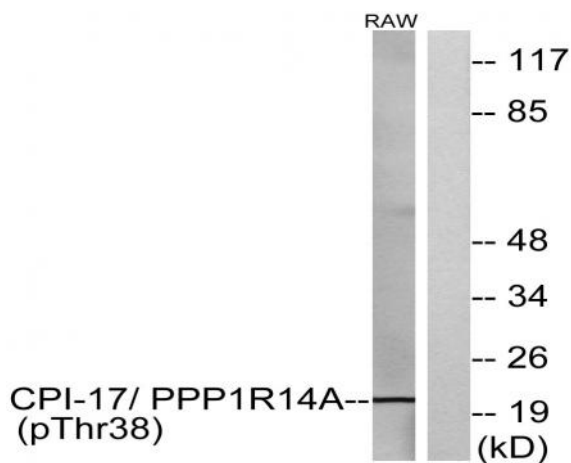
Products Images



Enzyme-Linked Immunosorbent Assay (Phospho-ELISA) for Immunogen Phosphopeptide (Phospho-left) and Non-Phosphopeptide (Phospho-right), using CPI17 alpha (Phospho-Thr38) Antibody



Immunohistochemistry analysis of paraffin-embedded human breast carcinoma, using CPI17 alpha (Phospho-Thr38) Antibody. The picture on the right is blocked with the phospho peptide.



Western blot analysis of lysates from RAW264.7 cells, using CPI17 alpha (Phospho-Thr38) Antibody. The lane on the right is blocked with the phospho peptide.