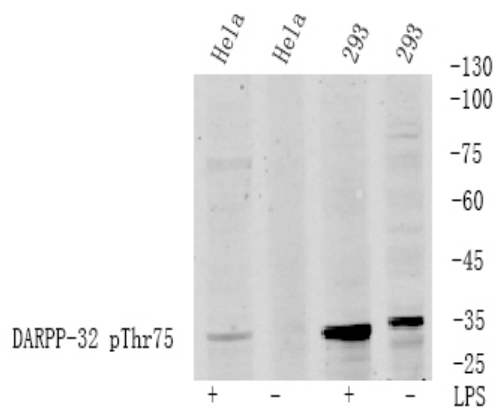


DARPP-32 (phospho Thr75) Polyclonal Antibody

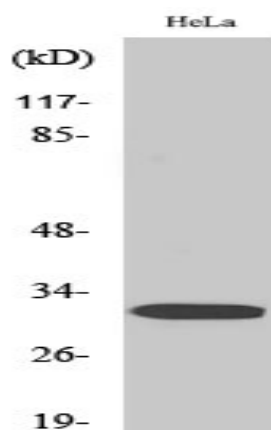
Catalog No :	YP0083
Reactivity :	Human;Mouse;Rat;Monkey
Applications :	WB;IHC;IF;ELISA
Target :	DARPP-32
Fields :	>>cAMP signaling pathway;>>Dopaminergic synapse;>>Cocaine addiction;>>Amphetamine addiction;>>Alcoholism
Gene Name :	PPP1R1B
Protein Name :	Protein phosphatase 1 regulatory subunit 1B
Human Gene Id :	84152
Human Swiss Prot No :	Q9UD71
Mouse Gene Id :	19049
Mouse Swiss Prot No :	Q60829
Rat Gene Id :	360616
Rat Swiss Prot No :	Q6J4I0
Immunogen :	The antiserum was produced against synthesized peptide derived from human DARPP-32 around the phosphorylation site of Thr75. AA range:41-90
Specificity :	Phospho-DARPP-32 (T75) Polyclonal Antibody detects endogenous levels of DARPP-32 protein only when phosphorylated at T75.
Formulation :	Liquid in PBS containing 50% glycerol, 0.5% BSA and 0.02% sodium azide.
Source :	Polyclonal, Rabbit,IgG
Dilution :	WB 1:500 - 1:2000. IHC 1:100 - 1:300. ELISA: 1:40000.. IF 1:50-200

Purification :	The antibody was affinity-purified from rabbit antiserum by affinity-chromatography using epitope-specific immunogen.
Concentration :	1 mg/ml
Storage Stability :	-15°C to -25°C/1 year(Do not lower than -25°C)
Observed Band :	32kD
Background :	This gene encodes a bifunctional signal transduction molecule. Dopaminergic and glutamatergic receptor stimulation regulates its phosphorylation and function as a kinase or phosphatase inhibitor. As a target for dopamine, this gene may serve as a therapeutic target for neurologic and psychiatric disorders. Multiple transcript variants encoding different isoforms have been found for this gene. [provided by RefSeq, Oct 2011],
Function :	function:Inhibitor of protein-phosphatase 1.,PTM:Dopamine- and cyclic AMP-regulated neuronal phosphoprotein.,PTM:Phosphorylation of Thr-34 is required for activity.,similarity:Belongs to the protein phosphatase inhibitor 1 family.,
Subcellular Location :	Cytoplasm.
Expression :	Adipose tissue,Brain,Cerebellum,Colon,Ovary,
Tag :	orthogonal
Sort :	4998
No2 :	2301S
No4 :	1
Host :	Rabbit
Modifications :	Phospho

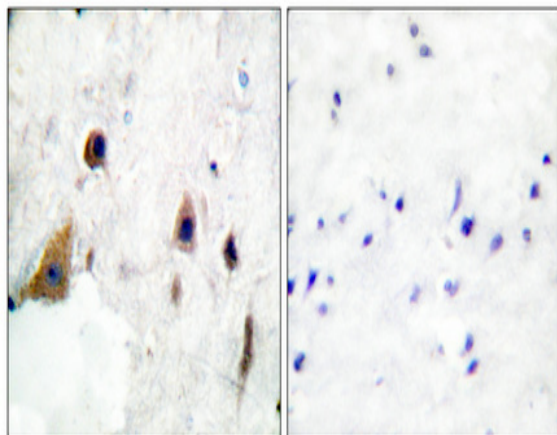
Products Images



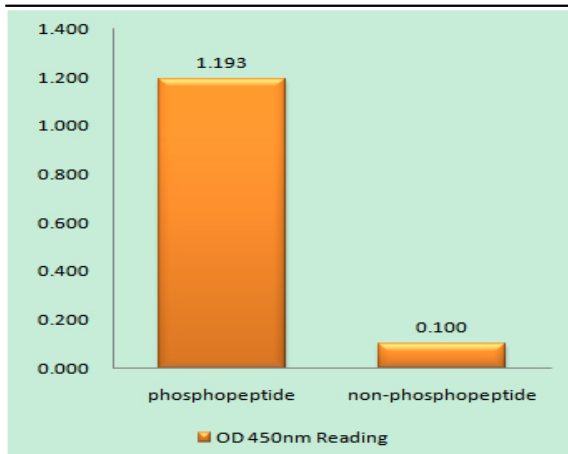
Western Blot analysis of cell lysis treated or untreated by LPS 100ng/mL 30min, using primary antibody at 1:1000 dilution. Secondary antibody(catalog#:RS23920) was diluted at 1:10000



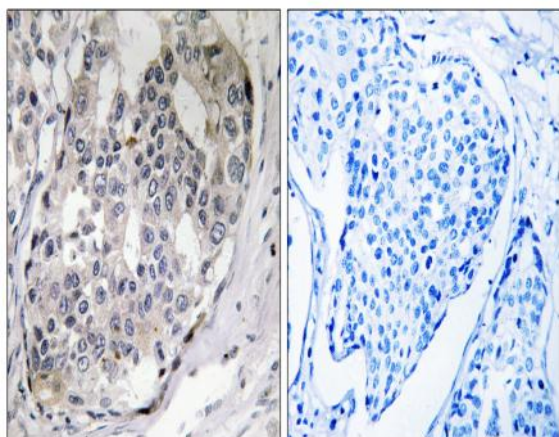
Western Blot analysis of various cells using Phospho-DARPP-32 (T75) Polyclonal Antibody diluted at 1:500



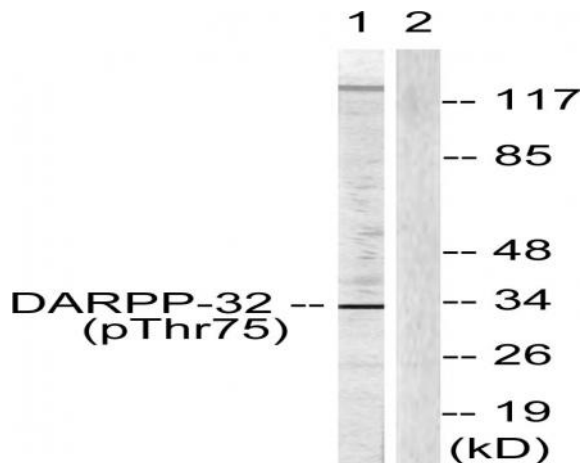
Immunohistochemical analysis of paraffin-embedded Human breast cancer. Antibody was diluted at 1:100(4° overnight). High-pressure and temperature Tris-EDTA,pH8.0 was used for antigen retrieval. Negative contrl (right) obtained from antibody was pre-absorbed by immunogen peptide.



Enzyme-Linked Immunosorbent Assay (Phospho-ELISA) for Immunogen Phosphopeptide (Phospho-left) and Non-Phosphopeptide (Phospho-right), using DARPP-32 (Phospho-Thr75) Antibody



Immunohistochemistry analysis of paraffin-embedded human breast carcinoma, using DARPP-32 (Phospho-Thr75) Antibody. The picture on the right is blocked with the phospho peptide.



Western blot analysis of lysates from COS7 cells treated with Forskolin 40nM 30', using DARPP-32 (Phospho-Thr75) Antibody. The lane on the right is blocked with the phospho peptide.