

HSP27 (phospho Ser82) Polyclonal Antibody

Catalog No :	YP0136
Reactivity :	Human;Mouse;Rat
Applications :	WB;IHC;IF;ELISA
Target :	HSP27
Fields :	>>MAPK signaling pathway;>>VEGF signaling pathway;>>Amoebiasis
Gene Name :	HSPB1
Protein Name :	Heat shock protein beta-1
Human Gene Id :	3315
Human Swiss Prot No :	P04792
Mouse Gene Id :	15507
Mouse Swiss Prot No :	P14602
Rat Gene Id :	24471
Rat Swiss Prot No :	P42930
Immunogen :	The antiserum was produced against synthesized peptide derived from human HSP27 around the phosphorylation site of Ser82. AA range:48-97
Specificity :	Phospho-HSP27 (S82) Polyclonal Antibody detects endogenous levels of HSP27 protein only when phosphorylated at S82.
Formulation :	Liquid in PBS containing 50% glycerol, 0.5% BSA and 0.02% sodium azide.
Source :	Polyclonal, Rabbit,IgG
Dilution :	WB 1:500 - 1:2000. IHC 1:100 - 1:300. ELISA: 1:5000.. IF 1:50-200

Purification :	The antibody was affinity-purified from rabbit antiserum by affinity-chromatography using epitope-specific immunogen.
Concentration :	1 mg/ml
Storage Stability :	-15°C to -25°C/1 year(Do not lower than -25°C)
Observed Band :	27kD
Cell Pathway :	MAPK_ERK_Growth;MAPK_G_Protein;VEGF;
Background :	The protein encoded by this gene is induced by environmental stress and developmental changes. The encoded protein is involved in stress resistance and actin organization and translocates from the cytoplasm to the nucleus upon stress induction. Defects in this gene are a cause of Charcot-Marie-Tooth disease type 2F (CMT2F) and distal hereditary motor neuropathy (dHMN). [provided by RefSeq, Oct 2008],
Function :	disease:Defects in HSPB1 are a cause of distal hereditary motor neuronopathy type 2B (HMN2B) [MIM:608634]. Distal hereditary motor neuronopathies constitute a heterogeneous group of neuromuscular disorders caused by selective impairment of motor neurons in the anterior horn of the spinal cord, without sensory deficit in the posterior horn. The overall clinical picture consists of a classical distal muscular atrophy syndrome in the legs without clinical sensory loss. The disease starts with weakness and wasting of distal muscles of the anterior tibial and peroneal compartments of the legs. Later on, weakness and atrophy may expand to the proximal muscles of the lower limbs and/or to the distal upper limbs.,disease:Defects in HSPB1 are the cause of Charcot-Marie-Tooth disease type 2F (CMT2F) [MIM:606595]. CMT2F is a form of Charcot-Marie-Tooth disease, the most common inherited disorder of
Subcellular Location :	Cytoplasm . Nucleus . Cytoplasm, cytoskeleton, spindle . Cytoplasmic in interphase cells. Colocalizes with mitotic spindles in mitotic cells. Translocates to the nucleus during heat shock and resides in sub-nuclear structures known as SC35 speckles or nuclear splicing speckles. .
Expression :	Detected in all tissues tested: skeletal muscle, heart, aorta, large intestine, small intestine, stomach, esophagus, bladder, adrenal gland, thyroid, pancreas, testis, adipose tissue, kidney, liver, spleen, cerebral cortex, blood serum and cerebrospinal fluid. Highest levels are found in the heart and in tissues composed of striated and smooth muscle.
Tag :	orthogonal,hot
Sort :	7892

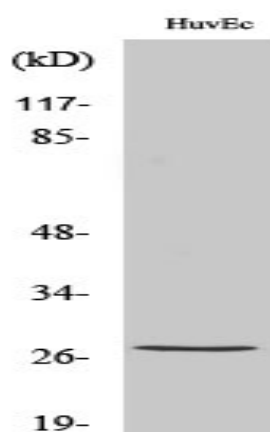
No2 : 9709T

No4 : 1

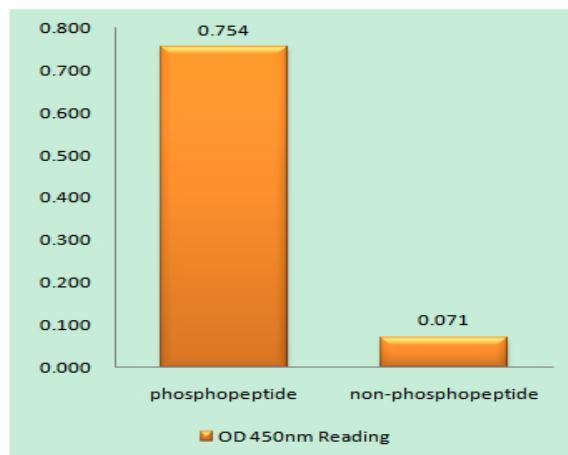
Host : Rabbit

Modifications : Phospho

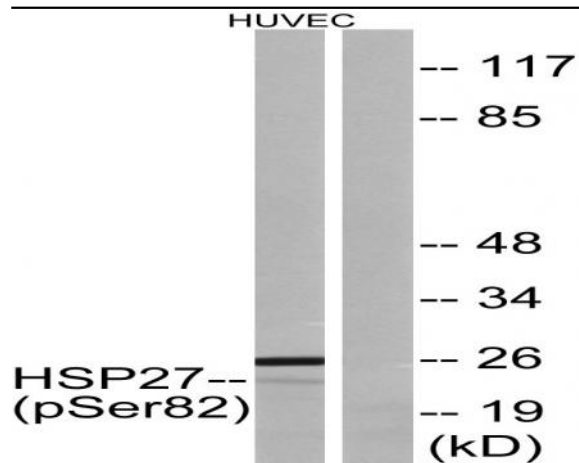
Products Images



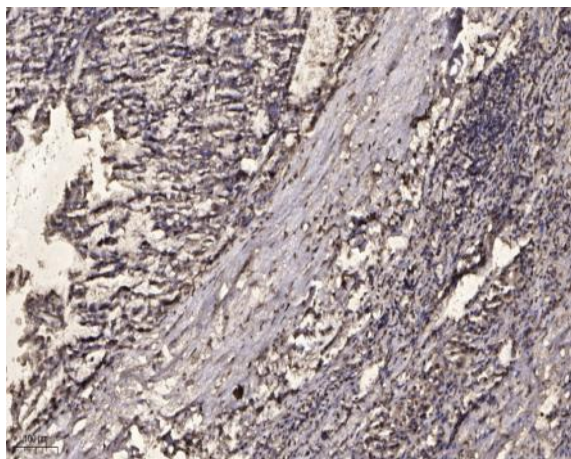
Western Blot analysis of various cells using Phospho-HSP27 (S82) Polyclonal Antibody diluted at 1:1000



Enzyme-Linked Immunosorbent Assay (Phospho-ELISA) for Immunogen Phosphopeptide (Phospho-left) and Non-Phosphopeptide (Phospho-right), using HSP27 (Phospho-Ser82) Antibody



Western blot analysis of lysates from HUVEC cells treated with TNF 20ng/ml 30', using HSP27 (Phospho-Ser82) Antibody. The lane on the right is blocked with the phospho peptide.



Immunohistochemical analysis of paraffin-embedded human liver cancer. 1, Antibody was diluted at 1:200(4° overnight). 2, Tris-EDTA,pH9.0 was used for antigen retrieval. 3,Secondary antibody was diluted at 1:200(room temperature, 45min).