

Jun D (phospho Ser255) Polyclonal Antibody

Catalog No :	YP0160
Reactivity :	Human;Mouse;Rat
Applications :	WB;IHC;IF;IP;ELISA
Target :	Jun D
Fields :	>>MAPK signaling pathway;>>Osteoclast differentiation;>>IL-17 signaling pathway;>>Parathyroid hormone synthesis, secretion and action
Gene Name :	JUND
Protein Name :	Transcription factor jun-D
Human Gene Id :	3727
Human Swiss Prot No :	P17535
Mouse Gene Id :	16478
Mouse Swiss Prot No :	P15066
Rat Gene Id :	24518
Rat Swiss Prot No :	P52909
Immunogen :	The antiserum was produced against synthesized peptide derived from human JunD around the phosphorylation site of Ser255. AA range:222-271
Specificity :	Phospho-Jun D (S255) Polyclonal Antibody detects endogenous levels of Jun D protein only when phosphorylated at S255.
Formulation :	Liquid in PBS containing 50% glycerol, 0.5% BSA and 0.02% sodium azide.
Source :	Polyclonal, Rabbit,IgG
Dilution :	WB 1:500 - 1:2000. IHC 1:100 - 1:300. Immunoprecipitation: 2-5 ug:mg lysate.

ELISA: 1:20000.. IF 1:50-200

Purification : The antibody was affinity-purified from rabbit antiserum by affinity-chromatography using epitope-specific immunogen.

Concentration : 1 mg/ml

Storage Stability : -15°C to -25°C/1 year(Do not lower than -25°C)

Molecularweight : 35kD

Cell Pathway : MAPK_ERK_Growth;MAPK_G_Protein;

Background : The protein encoded by this intronless gene is a member of the JUN family, and a functional component of the AP1 transcription factor complex. This protein has been proposed to protect cells from p53-dependent senescence and apoptosis. Alternative translation initiation site usage results in the production of different isoforms (PMID:12105216). [provided by RefSeq, Nov 2013],

Function : function: Binds an AP-1 site and upon cotransfection stimulates the activity of a promoter that bears an AP-1 site., similarity: Belongs to the bZIP family. Jun subfamily., similarity: Contains 1 bZIP domain., subunit: Binds DNA as a dimer.,

Subcellular Location : Nucleus.

Expression : Epithelium, Spleen,

Tag : orthogonal, ip

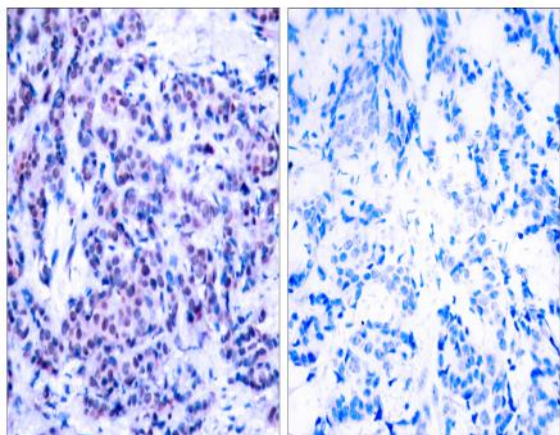
Sort : 8818

No4 : 1

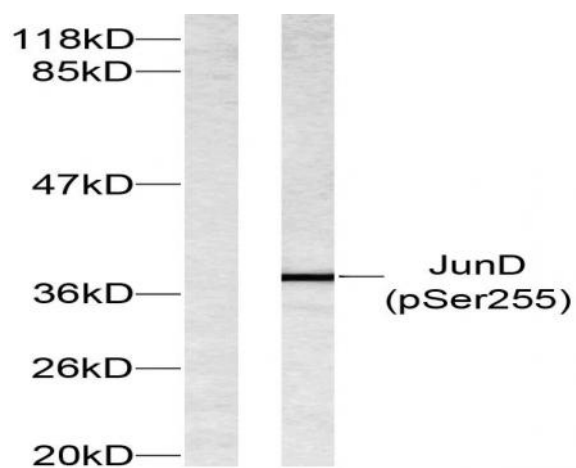
Host : Rabbit

Modifications : Phospho

[Products Images](#)



Immunohistochemistry analysis of paraffin-embedded human breast carcinoma, using JunD (Phospho-Ser255) Antibody. The picture on the right is blocked with the phospho peptide.



Western blot analysis of lysates from 293 cells treated with Forskolin, using JunD (Phospho-Ser255) Antibody. The lane on the left is blocked with the phospho peptide.