

**HER2 (phospho Tyr1248) Polyclonal Antibody**

<b>Catalog No :</b>	YP0178
<b>Reactivity :</b>	Human;Mouse;Rat
<b>Applications :</b>	WB;IHC;IF;ELISA
<b>Target :</b>	HER2
<b>Fields :</b>	>>EGFR tyrosine kinase inhibitor resistance;>>Endocrine resistance;>>Platinum drug resistance;>>MAPK signaling pathway;>>ErbB signaling pathway;>>Calcium signaling pathway;>>HIF-1 signaling pathway;>>PI3K-Akt signaling pathway;>>Focal adhesion;>>Adherens junction;>>Tight junction;>>Pathways in cancer;>>Proteoglycans in cancer;>>MicroRNAs in cancer;>>Pancreatic cancer;>>Endometrial cancer;>>Prostate cancer;>>Bladder cancer;>>Non-small cell lung cancer;>>Breast cancer;>>Gastric cancer;>>Central carbon metabolism in cancer
<b>Gene Name :</b>	ERBB2
<b>Protein Name :</b>	Receptor tyrosine-protein kinase erbB-2
<b>Human Gene Id :</b>	2064
<b>Human Swiss Prot No :</b>	P04626
<b>Mouse Gene Id :</b>	13866
<b>Mouse Swiss Prot No :</b>	P70424
<b>Rat Swiss Prot No :</b>	P06494
<b>Immunogen :</b>	The antiserum was produced against synthesized peptide derived from human HER2 around the phosphorylation site of Tyr1248. AA range:1206-1255
<b>Specificity :</b>	Phospho-Neu (Y1248) Polyclonal Antibody detects endogenous levels of Neu protein only when phosphorylated at Y1248.
<b>Formulation :</b>	Liquid in PBS containing 50% glycerol, 0.5% BSA and 0.02% sodium azide.

<b>Source :</b>	Polyclonal, Rabbit,IgG
<b>Dilution :</b>	WB 1:500 - 1:2000. IHC 1:100 - 1:300. ELISA: 1:20000.. IF 1:50-200
<b>Purification :</b>	The antibody was affinity-purified from rabbit antiserum by affinity-chromatography using epitope-specific immunogen.
<b>Concentration :</b>	1 mg/ml
<b>Storage Stability :</b>	-15°C to -25°C/1 year(Do not lower than -25°C)
<b>Observed Band :</b>	180kD
<b>Cell Pathway :</b>	ErbB_HER;Calcium;Focal adhesion;Adherens_Junction;Pathways in cancer;Pancreatic cancer;Endometrial cancer;Prostate cancer;Bladder cancer;Non-small cell lung cancer;
<b>Background :</b>	<p>This gene encodes a member of the epidermal growth factor (EGF) receptor family of receptor tyrosine kinases. This protein has no ligand binding domain of its own and therefore cannot bind growth factors. However, it does bind tightly to other ligand-bound EGF receptor family members to form a heterodimer, stabilizing ligand binding and enhancing kinase-mediated activation of downstream signalling pathways, such as those involving mitogen-activated protein kinase and phosphatidylinositol-3 kinase. Allelic variations at amino acid positions 654 and 655 of isoform a (positions 624 and 625 of isoform b) have been reported, with the most common allele, Ile654/Ile655, shown here. Amplification and/or overexpression of this gene has been reported in numerous cancers, including breast and ovarian tumors. Alternative splicing results in several additional transcript variants, some encoding d</p>
<b>Function :</b>	<p>catalytic activity:ATP + a [protein]-L-tyrosine = ADP + a [protein]-L-tyrosine phosphate.,disease:Defects in ERBB2 are associated with familial glioma of brain [MIM:137800]; also called glioblastoma multiforme. Gliomas are central nervous system neoplasms derived from glial cells and comprise astrocytomas, glioblastoma multiforme, oligodendrogliomas, and ependymomas.,disease:Defects in ERBB2 are associated with gastric cancer [MIM:137215]; also known as hereditary familial diffuse gastric cancer (HDGC).,disease:Defects in ERBB2 are associated with lung cancer [MIM:211980]; also called adenocarcinoma of lung.,disease:Defects in ERBB2 are associated with ovarian cancer [MIM:167000]. Ovarian cancer is the leading cause of death from gynecologic malignancy. It is characterized by advanced presentation with loco-regional dissemination in the peritoneal cavity and the rare incidence of viscera</p>
<b>Subcellular Location :</b>	[Isoform 1]: Cell membrane ; Single-pass type I membrane protein. Early endosome . Cytoplasm, perinuclear region. Nucleus. Translocation to the nucleus requires endocytosis, probably endosomal sorting and is mediated by importin

beta-1/KPNB1. Also detected in VPS35-positive endosome-to-TGN retrograde vesicles (PubMed:31138794). .; [Isoform 2]: Cytoplasm. Nucleus.; [Isoform 3]: Cytoplasm. Nucleus.

**Expression :** Expressed in a variety of tumor tissues including primary breast tumors and tumors from small bowel, esophagus, kidney and mouth.

**Tag :** orthogonal

**Sort :** 1097

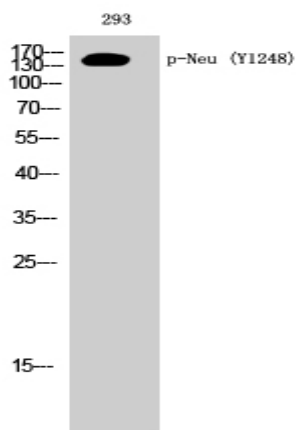
**No2 :** 2247T

**No4 :** 1

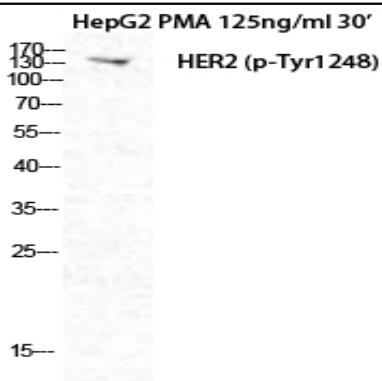
**Host :** Rabbit

**Modifications :** Phospho

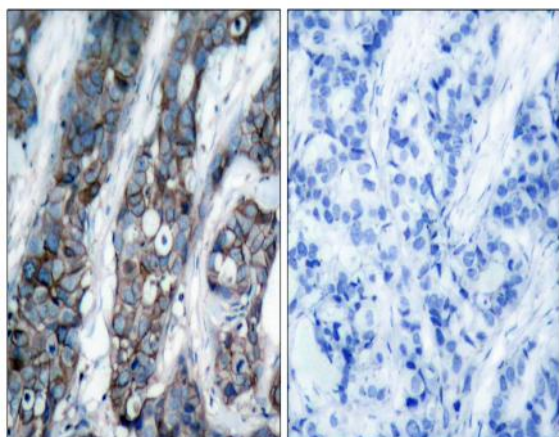
## Products Images



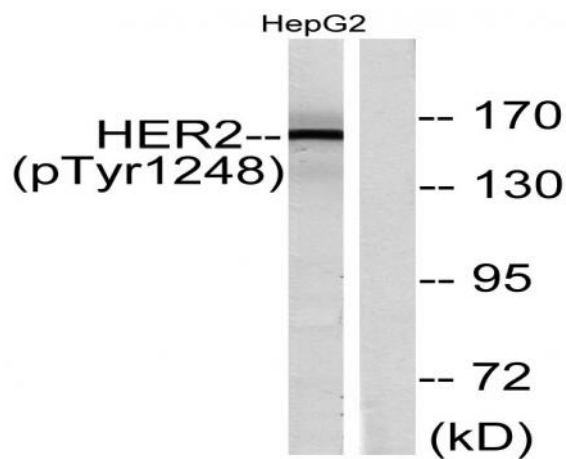
Western Blot analysis of 293 cells using Phospho-Neu (Y1248) Polyclonal Antibody diluted at 1:1000



Western Blot analysis of HepG2+PMA cells using Phospho-Neu (Y1248) Polyclonal Antibody diluted at 1:1000



Immunohistochemistry analysis of paraffin-embedded human breast carcinoma, using HER2 (Phospho-Tyr1248) Antibody. The picture on the right is blocked with the phospho peptide.



Western blot analysis of lysates from HepG2 cells treated with PMA 125ng/ml 30', using HER2 (Phospho-Tyr1248) Antibody. The lane on the right is blocked with the phospho peptide.