

**PDLIM5 (phospho Tyr251) Polyclonal Antibody**

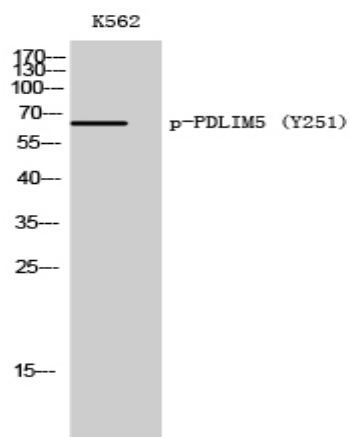
<b>Catalog No :</b>	YP0223
<b>Reactivity :</b>	Human;Rat;Mouse;
<b>Applications :</b>	WB;ELISA;IHC
<b>Target :</b>	PDLIM5
<b>Gene Name :</b>	PDLIM5
<b>Protein Name :</b>	PDZ and LIM domain protein 5
<b>Human Gene Id :</b>	10611
<b>Human Swiss Prot No :</b>	Q96HC4
<b>Mouse Swiss Prot No :</b>	Q8CI51
<b>Immunogen :</b>	Synthesized phospho-peptide around the phosphorylation site of human PDLIM5 (phospho Tyr251)
<b>Specificity :</b>	Phospho-PDLIM5 (Y251) Polyclonal Antibody detects endogenous levels of PDLIM5 protein only when phosphorylated at Y251.
<b>Formulation :</b>	Liquid in PBS containing 50% glycerol, 0.5% BSA and 0.02% sodium azide.
<b>Source :</b>	Polyclonal, Rabbit,IgG
<b>Dilution :</b>	WB 1:500-2000;IHC 1:50-300; ELISA 2000-20000
<b>Purification :</b>	The antibody was affinity-purified from rabbit antiserum by affinity-chromatography using epitope-specific immunogen.
<b>Concentration :</b>	1 mg/ml
<b>Storage Stability :</b>	-15°C to -25°C/1 year(Do not lower than -25°C)
<b>Observed Band :</b>	64kD

---

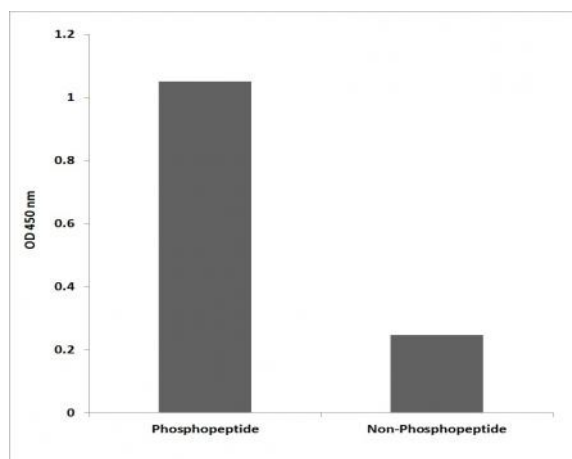
<b>Background :</b>	This gene encodes a member of a family of proteins that possess a 100-amino acid PDZ domain at the N terminus and one to three LIM domains at the C-terminus. This family member functions as a scaffold protein that tethers protein kinases to the Z-disk in striated muscles. It is thought to function in cardiomyocyte expansion and in restraining postsynaptic growth of excitatory synapses. Alternative splicing of this gene results in multiple transcript variants. [provided by RefSeq, Jan 2012],
<b>Function :</b>	caution:The sequence shown here is derived from an Ensembl automatic analysis pipeline and should be considered as preliminary data.,disease:May play a role in genetic susceptibility to schizophrenia. PDLIM5 is commonly increased in the brain of patients with bipolar disorder, schizophrenia, and major depression.,function:May play an important role in the heart development by scaffolding PKC to the Z-disk region.,similarity:Contains 1 PDZ (DHR) domain.,similarity:Contains 3 LIM zinc-binding domains.,subunit:Interacts with various PKC isoforms through the LIM domains. Interacts with actin and alpha-actinin through the PDZ domain.,tissue specificity:Heart and skeletal muscle specific.,
<b>Subcellular Location :</b>	Cell junction, synapse, postsynaptic density . Cell junction, synapse, presynapse . Cell junction, synapse, postsynapse . Cytoplasm, cytosol . Detected both at presynaptic and postsynaptic sites, exclusively at excitatory synapses, but not inhibitory synapses, in hippocampal neurons. .
<b>Expression :</b>	Heart and skeletal muscle specific. Expression is commonly increased in the brain of patients with bipolar disorder, schizophrenia, and major depression.
<b>Sort :</b>	11789
<b>No4 :</b>	1
<b>Host :</b>	Rabbit
<b>Modifications :</b>	Phospho

---

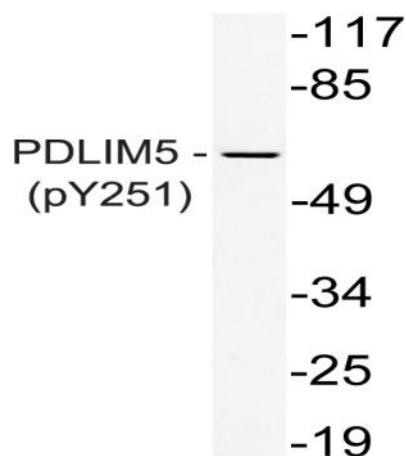
## Products Images



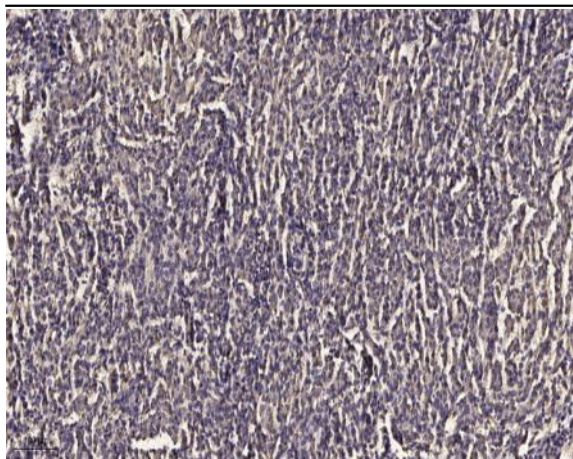
Western Blot analysis of K562 cells using Phospho-PDLIM5 (Y251) Polyclonal Antibody



Enzyme-Linked Immunosorbent Assay (Phospho-ELISA) for Immunogen Phosphopeptide (Phospho-left) and Non-Phosphopeptide (Phospho-right), using PDLIM5 (Phospho-Tyr251) Antibody



Western blot analysis of lysate from K562 cells, using phospho-PDLIM5 (Phospho-Tyr251) antibody.



Immunohistochemical analysis of paraffin-embedded human meningioma. 1, Antibody was diluted at 1:200(4 ° overnight). 2, Tris-EDTA,pH9.0 was used for antigen retrieval. 3,Secondary antibody was diluted at 1:200(room temperature, 45min).